



**A SUBSTANTIAL FIVE BEDROOM, THREE BATHROOM DETACHED FAMILY HOME
WITH NO ONWARD CHAIN**

Overchess Ridge, Solesbridge Lane, Chorleywood, Hertfordshire, WD3 5SF

ROBSONS

Overchess Ridge, Solesbridge Lane, Chorleywood,
Hertfordshire, WD3 5SF

**LOUNGE • KITCHEN/DINING ROOM &
UTILITY ROOM • CONSERVATORY • STUDY •
GROUND FLOOR BATHROOM • PRINCIPAL
BEDROOM WITH EN-SUITE • FOUR FURTHER
BEDROOMS • FAMILY BATHROOM •
GENEROUS REAR GARDEN & INTEGRAL
GARAGE • NO ONWARD CHAIN**

Description

A substantial five-bedroom, three-bathroom detached family home offering 2,290 sq. ft. of well-balanced accommodation arranged over two floors, complete with an integral garage and off-street parking. Ideally located in the heart of Chorleywood, the property is within walking distance of local amenities, transport links and schools, and is offered to the market with no onward chain.

A welcoming and spacious hallway gives access to a front-aspect study and a ground floor bathroom, leading through to the impressive 20'0 x 12'9 lounge featuring a charming fireplace. French doors open from the lounge into a bright and airy conservatory that enjoys views over the garden.





The open-plan kitchen/dining room, accessible from the lounge and hallway, offers a generous range of fitted units, integrated appliances and a kitchen island, with further French doors opening directly onto the garden. Completing the ground floor is a practical utility room.

The principal bedroom benefits from fitted wardrobes and an en-suite bathroom with a bath and a shower. There are four additional bedrooms, two of which feature fitted wardrobes, along with a family bathroom.

The generous rear garden is mainly laid to lawn and framed by mature trees and shrubs, with a raised patio. To the front, the property offers a driveway, an integral garage and side access to the rear garden.

Location

Chorleywood Village's facilities include a wide choice of boutique shops, coffee houses and restaurants. Marks & Spencer and Waitrose food halls are available in Rickmansworth. The area is also well served for sought after state and private schools for all ages. The Metropolitan and Main lines at Chorleywood Station offer a frequent service into London and beyond.

Additional Information

Tenure: Freehold

Local Authority: Three Rivers District Council

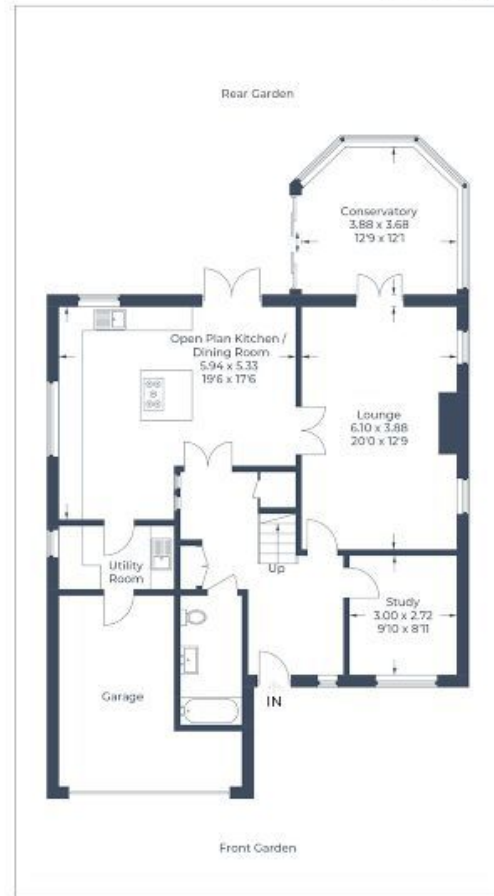
Council Tax Band: G

Energy Efficiency Rating: D

For additional information, please refer to www.robsonswb.com or call us on: 01923 285525.



Approximate Gross Internal Area
Ground Floor = 120.5 sq m / 1,297 sq ft
First Floor = 92.3 sq m / 993 sq ft
Total = 212.8 sq m / 2,290 sq ft
(Including Garage)



Ground Floor



First Floor

Illustration for identification purposes only,
measurements are approximate, not to scale.
© CJ Property Marketing Produced for Robsons

ROBSONS

2 New Parade, Chorleywood, Hertfordshire, WD3 5NJ
Tel: 01923 285525 Email: chorleywood@robsonswb.com

www.robsonswb.com

SCAN TO VISIT



OUR WEBSITE

Important notice: Robsons, their clients and any joint agents give notice that 1: They are not authorised to make or give any representations or warranties in relation to the property either here or elsewhere, either on their own behalf or on behalf of their client or otherwise. They assume no responsibility for any statement that may be made in these particulars. These particulars do not form part of any offer or contract and must not be relied upon as statements or representations of fact. 2: Any areas, measurements or distances are approximate. Plot sizes and dimensions are taken from Promap and are approximate. The text, photographs and plans are for guidance only and are not necessarily comprehensive. It should not be assumed that the property has all necessary planning, building regulation or other consents and Robsons have not tested any services, equipment or facilities. Purchasers must satisfy themselves by inspection or otherwise.