



An impressive four bedroom family home in a quiet cul de sac location  
Drysdale Close, Northwood, HA6 2YT

**ROBSONS**

**Asking Price: £4,500 pcm**

## **An impressive four bedroom family home in a quiet cul de sac location**

Drysdale Close, Northwood, HA6 2YT

---

• ENTRANCE HALL • RECEPTION ROOM • KITCHEN/DINING ROOM • STUDY • CLOAKROOM • MAIN BEDROOM WITH ENSUITE • THREE FURTHER BEDROOMS • FAMILY BATHROOM • REAR GARDEN • GARAGE ACCESSED VIA DRIVEWAY • UNFURNISHED

---

### **Description**

A rare opportunity to rent an impressive four bedroom detached family home, ideally located in the heart of Northwood within a quiet cul-de-sac. Finished to a high specification throughout, the property offers a welcoming entrance hall, a spacious lounge, and a modern open-plan kitchen ideal for family living and entertaining. Additional ground floor space includes a dedicated study, perfect for home working. Upstairs, the home features four generously sized double bedrooms, including a master suite with its own ensuite bathroom, alongside a contemporary family bathroom. Externally, the property benefits from a well maintained rear garden, a garage with internal access and a private front driveway providing ample parking.

\*\* An advance reservation payment of one weeks rent is required to secure the property \*\*

### **Location**

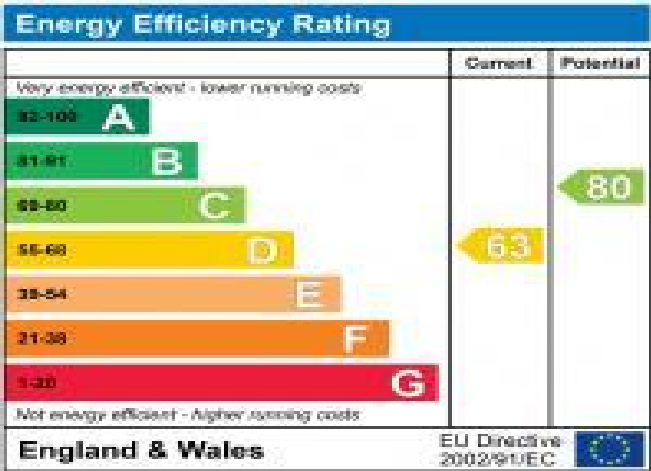
Northwood provides a range of shopping facilities including a Waitrose supermarket, a variety of restaurants and other amenities with the Metropolitan Line station providing access to Baker Street and the City. There is a plethora of state and private schooling together with a wide choice of recreational facilities, which include golf courses and fitness centres. The M1, M40 and M25 motorways are also accessible.





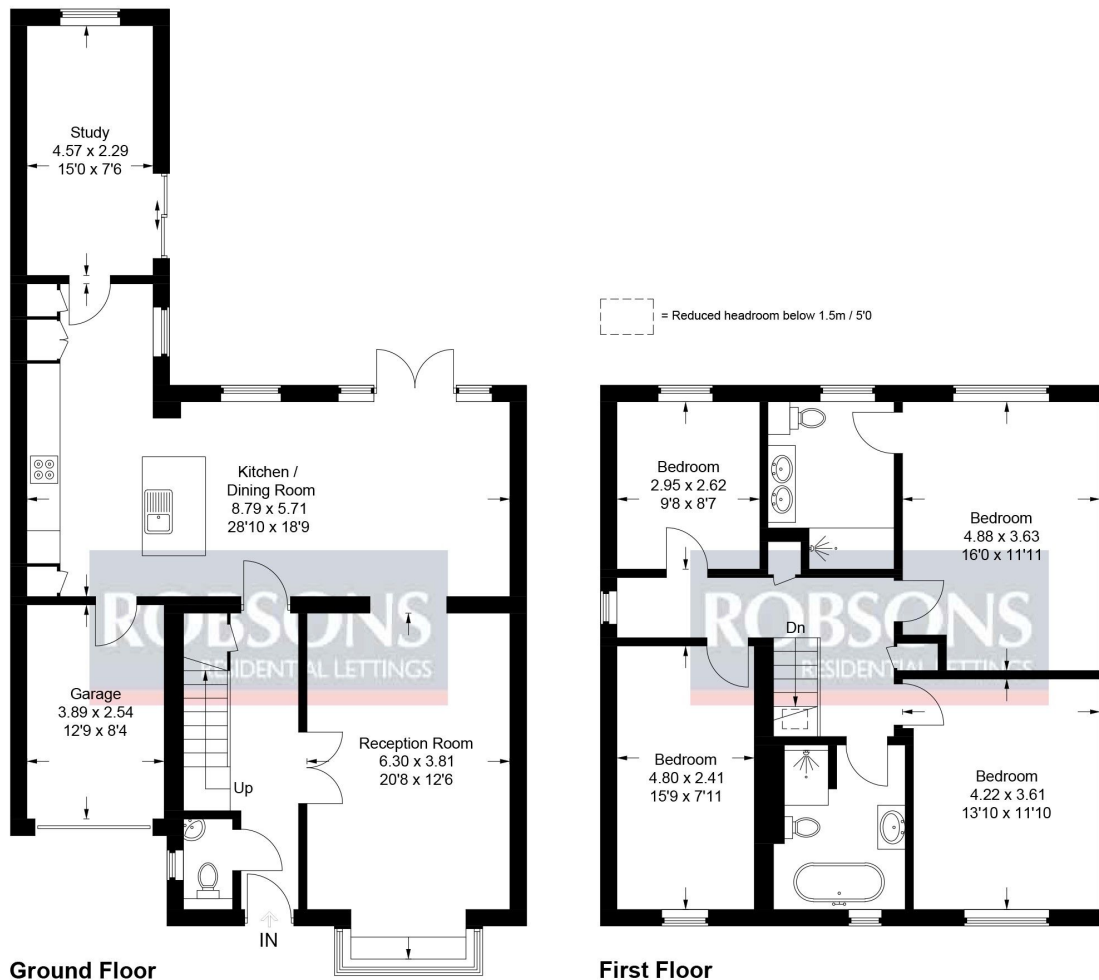
**Additional Information**

- Local Authority: Hillingdon
- Council Tax Band:
- Deposit Amount: £6,230.00
- Reservation Payment: One weeks rent
- Energy Efficiency Rating: Band D
- Available Date: 24/08/2026



# Drysdale Close

Approximate Gross Internal Area  
Ground Floor = 94.9 sq m / 1,021 sq ft  
First Floor = 81.4 sq m / 876 sq ft  
Total = 176.3 sq m / 1,897 sq ft



This plan is for layout guidance only. Not drawn to scale unless stated. Windows and door openings are approximate. Whilst every care is taken in the preparation of this plan, please check all dimensions, shapes and compass bearings before making any decisions reliant upon them.

© CJ Property Marketing Ltd Produced for Robsons



REGISTERED OFFICE 2-4 PACKHORSE ROAD, GERRARDS CROSS, BUCKINGHAMSHIRE, ENGLAND, SL9 7QE. COMPANY NO. 07557114. VAT NO. GB211239453