



A two bedroom duplex apartment in a gated development
Bury Lane, Rickmansworth, Hertfordshire WD3 1DR

ROBSONS

Asking Price: £1,800 pcm

A two bedroom duplex apartment in a gated development

Bury Lane, Rickmansworth, Hertfordshire WD3 1DR

• ENTRANCE HALL • LIVING/DINING ROOM • FITTED KITCHEN • SOUTH FACING BALCONY • STAIRS TO NEXT FLOOR • TWO BEDROOMS • BATHROOM • COMMUNAL GROUNDS • RESIDENTS PARKING • GATED DEVELOPMENT • PART FURNISHED

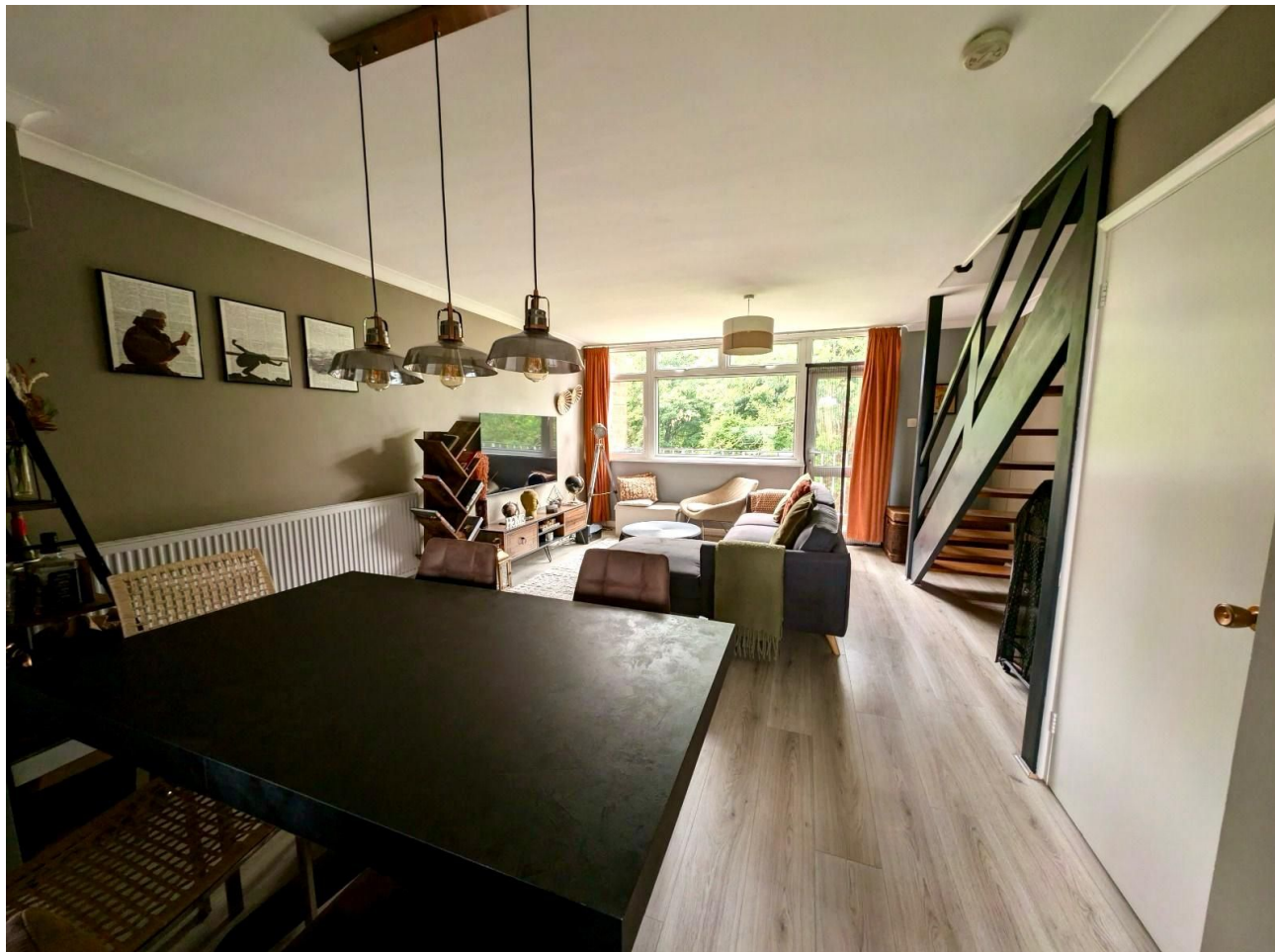
Description

A spacious and furnished two-bedroom duplex apartment set within a quiet gated development. The property features a generous living and dining area leading to a fitted kitchen, as well as a south facing balcony overlooking the beautifully maintained communal grounds. Upstairs offers two well proportioned bedrooms and a family bathroom. Residents also benefit from parking within the development.

** An advance reservation payment of one weeks rent is required to secure the property **

Location

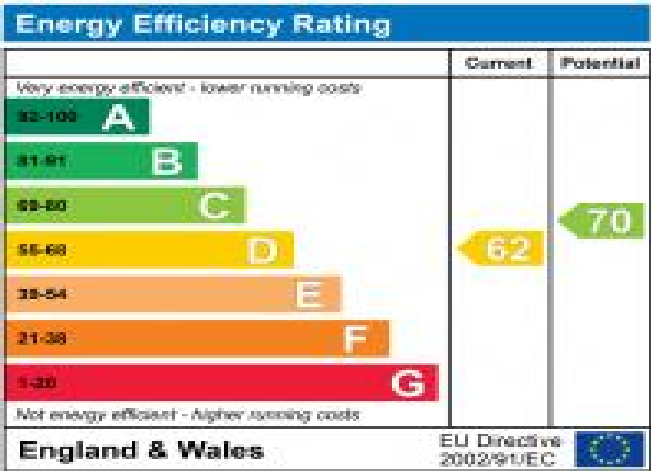
Located within easy reach of Rickmansworth's vibrant and active High Street, with Marks & Spencer's and Waitrose on offer for all your grocery shopping needs. Rickmansworth Metropolitan Line tube is within a 10 minute walk and local parks, Aquadrome and canal provide a great surrounding and lifestyle benefits.





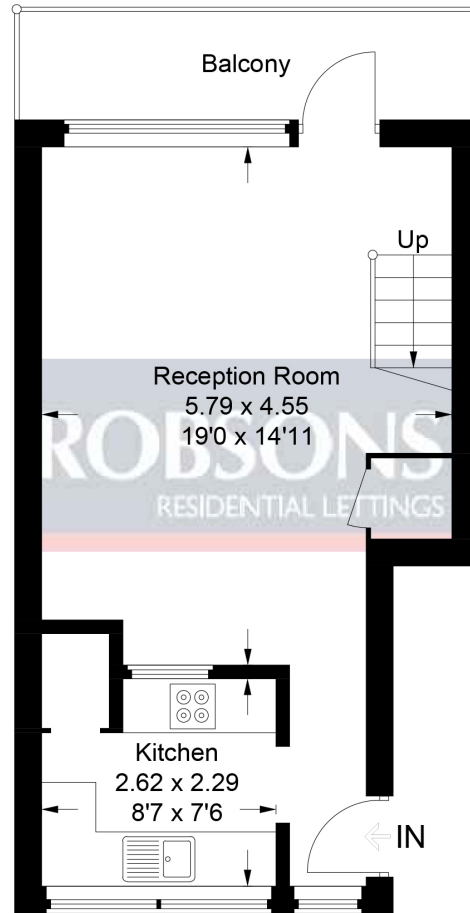
Additional Information

- Local Authority: Three Rivers
- Council Tax Band: D
- Deposit Amount: £2,076.00
- Reservation Payment: One weeks rent
- Energy Efficiency Rating: Band D
- Available Date: 20/07/2026

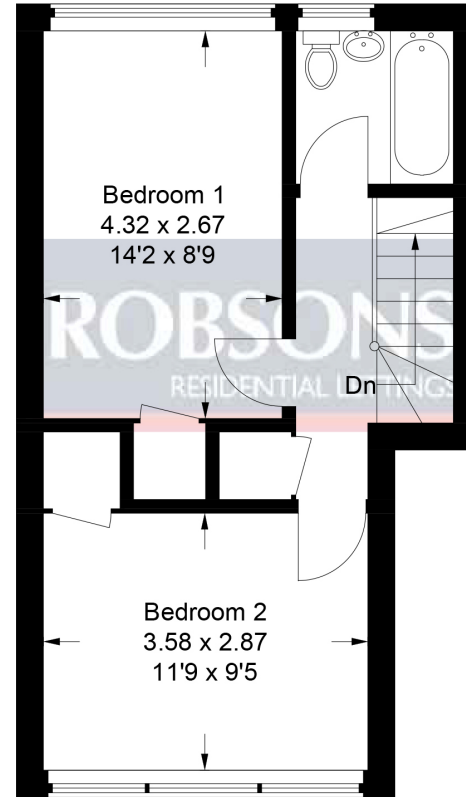


Bury Meadows

Approximate Gross Internal Area
Second Floor = 33.9 sq m / 365 sq ft
Third Floor = 33.6 sq m / 362 sq ft
Total = 67.5 sq m / 727 sq ft



Second Floor



Third Floor

This plan is for layout guidance only. Not drawn to scale unless stated. Windows and door openings are approximate. Whilst every care is taken in the preparation of this plan, please check all dimensions, shapes and compass bearings before making any decisions reliant upon them.

© CJ Property Marketing Ltd Produced for Robsons



REGISTERED OFFICE 2-4 PACKHORSE ROAD, GERRARDS CROSS, BUCKINGHAMSHIRE, ENGLAND, SL9 7QE. COMPANY NO. 07557114. VAT NO. GB211239453