



A FOUR BEDROOM, TWO BATHROOM EXTENDED PROPERTY

Central Avenue, Pinner, HA5 5BT

ROBSONS

Central Avenue, Pinner, HA5 5BT

**LOUNGE / DINING ROOM • KITCHEN /
BREAKFAST ROOM • UTILITY ROOM •
GROUND FLOOR BEDROOM WITH EN-SUITE •
UNDERFLOOR HEATING • THREE FURTHER
DOUBLE BEDROOMS • FAMILY BATHROOM •
REAR GARDEN • OFF-STREET PARKING**

Description

An extended four-bedroom, two-bathroom semi-detached property, presented in good order throughout, offering modern interiors with a stylish finish, a generous rear garden and off-street parking.

The ground floor comprises an entrance porch and hallway, a through lounge / dining room, a large kitchen with ample storage and integrated appliances, and a separate utility room. In addition, there is a ground floor double bedroom with an en-suite wet room and WC that can also be accessed via the hallway. The contemporary layout on the ground floor creates a spacious feel, providing a great space for socialising and entertaining. Three further double bedrooms are located on the first floor, two of which benefit from fitted wardrobes, along with a family bathroom.





Externally, there is a good-sized rear garden that is laid to lawn with a patio area. Off-street parking for two cars is available at the front of the property via your own driveway.

Location

Central Avenue is just a short distance from Rayners Lane High Street, with Pinner, Eastcote and North Harrow close by, all of which offer a variety of shopping facilities, restaurants, coffee houses and popular supermarkets. For commuters, nearby Rayners Lane Station provides a regular service into London via the Metropolitan and Piccadilly Line, with local bus routes easily accessible.

The area is well served by primary and secondary schooling, with Longfield Primary school just moments away, as well as children's play areas and recreational facilities.

Additional Information

Tenure: Freehold

Local Authority: London Borough of Harrow

Council Tax Band: E

Energy Efficiency Rating: D

For additional information, please refer to www.robsonsworld.com or call us on: 020 8866 8083.



Approximate Gross Internal Area
Ground Floor = 94.9 sq m / 1,021 sq ft
First Floor = 52.7 sq m / 567 sq ft
Total = 147.6 sq m / 1,588 sq ft

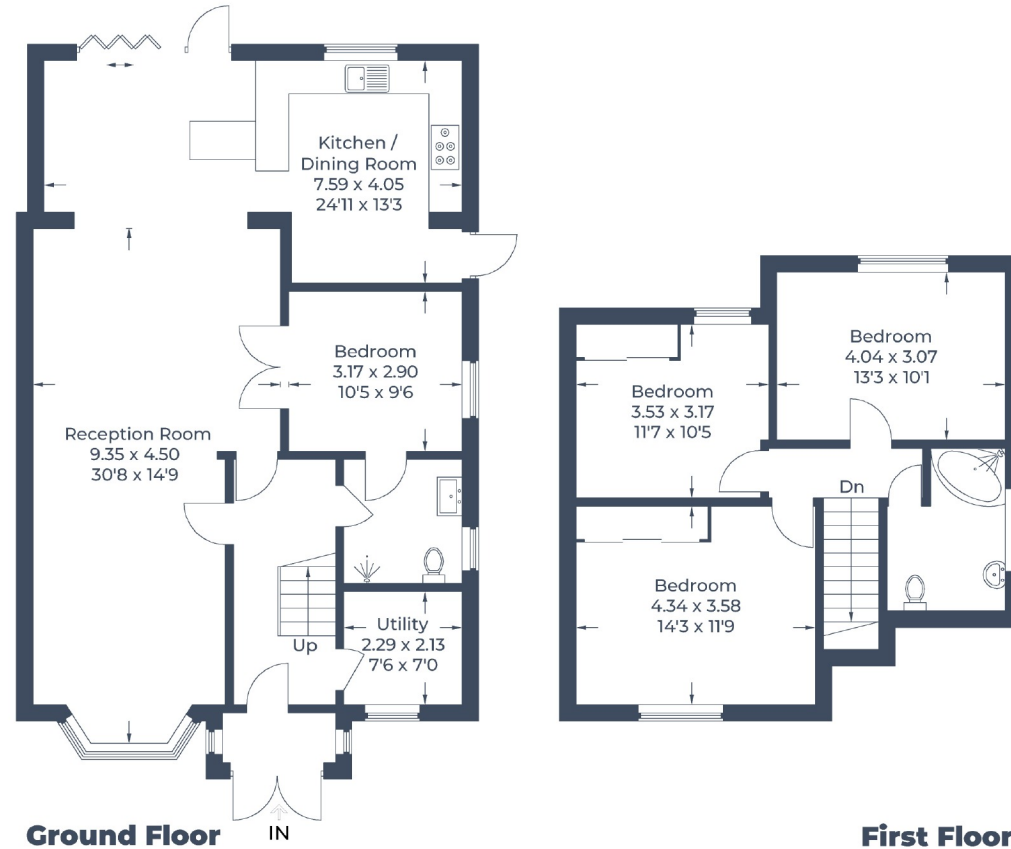


Illustration for identification purposes only,
measurements are approximate, not to scale.
© CJ Property Marketing Produced for Robsons

ROBSONS

1 High Street, Pinner HA5 5PJ
Tel: 020 8866 8083 Email: pinner@robsonswb.com
www.robsonswb.com

SCAN TO VISIT



OUR WEBSITE

Important notice: Robsons, their clients and any joint agents give notice that 1: They are not authorised to make or give any representations or warranties in relation to the property either here or elsewhere, either on their own behalf or on behalf of their client or otherwise. They assume no responsibility for any statement that may be made in these particulars. These particulars do not form part of any offer or contract and must not be relied upon as statements or representations of fact. 2: Any areas, measurements or distances are approximate. Plot sizes and dimensions are taken from Promap and are approximate. The text, photographs and plans are for guidance only and are not necessarily comprehensive. It should not be assumed that the property has all necessary planning, building regulation or other consents and Robsons have not tested any services, equipment or facilities. Purchasers must satisfy themselves by inspection or otherwise.