



A MODERN SEMI-DETACHED FOUR BEDROOM FAMILY HOME

Addison Close, Northwood, Middlesex, HA6 1TA

ROBSONS

Addison Close, Northwood, Middlesex, HA6 1TA

SEMI-DETACHED • FOUR BEDROOMS • TWO BATHROOMS • LIVING ROOM • SPACIOUS OPEN-PLAN KITCHEN/DINING ROOM • UTILITY ROOM • REAR GARDEN WITH OUTBUILDING • DRIVEWAY PARKING WITH ELECTRIC VEHICLE CHARGING POINT

Description

A beautifully presented semi-detached four-bedroom family home, offered in excellent condition throughout with a modern finish.

The ground floor features a spacious and inviting living room, alongside a stylish open-plan kitchen, dining, and living area which opens out onto the rear garden. Additional ground floor benefits include a separate utility room and a contemporary shower room.

Upstairs, the first floor comprises four bedrooms and a stylish family bathroom, providing ample space for a growing family.





Externally, the property boasts a well-maintained rear garden with a patio area ideal for outdoor dining, steps leading up to a raised lawn, and access to an air-conditioned outbuilding perfect for a home office or gym.

To the front, a driveway offers convenient off-street parking.

Location

Northwood provides a range of shopping facilities including Waitrose supermarket, a variety of restaurants and other amenities with the Metropolitan Line station providing access to Baker Street and the City. There is a plethora of state and private schooling together with a wide choice of recreational facilities, which include golf courses and fitness centres. The M1, M40 and M25 motorways are also accessible.

NB this property is situated within the proximity of the ULEZ, if your vehicle does not comply charges may apply.

Additional Information

Tenure: Freehold

Local Authority: London Borough of Hillingdon

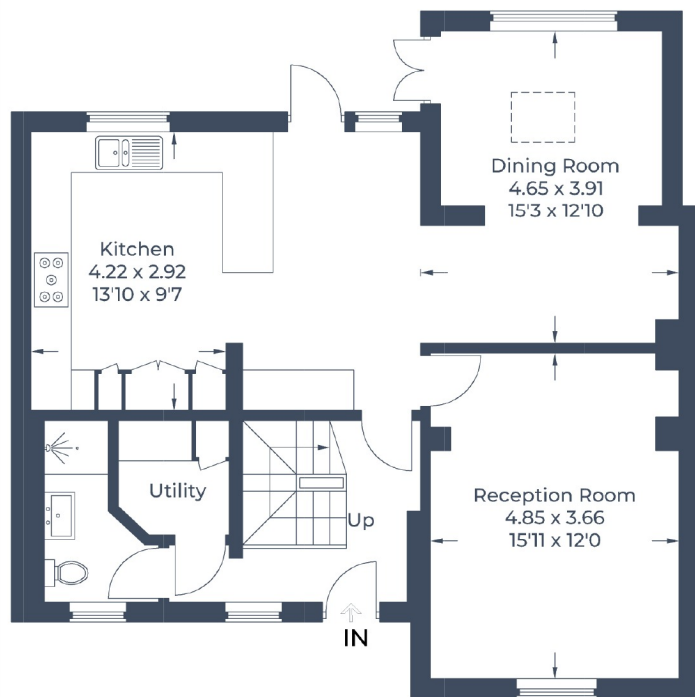
Council Tax Band: D

Energy Efficiency Rating: tbc

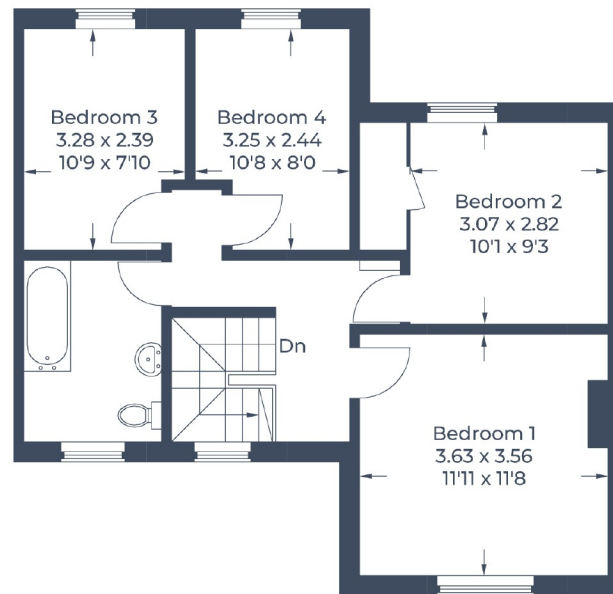
For additional information, please refer to www.robsonsworld.com or call us on: 01923 835355.



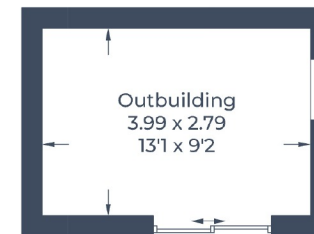
Approximate Gross Internal Area
Ground Floor = 76.8 sq m / 827 sq ft
First Floor = 55.5 sq m / 597 sq ft
Outbuilding = 11.5 sq m / 124 sq ft
Total = 143.8 sq m / 1,548 sq ft



Ground Floor



First Floor



(Not Shown In Actual Location / Orientation)

Illustration for identification purposes only,
measurements are approximate, not to scale.
© CJ Property Marketing Produced for Robsons



7 Clive Parade, Northwood, HA6 2QF
Tel: 01923 835355 Email: northwood@robsonsweb.com
www.robsonsweb.com

SCAN TO VISIT



OUR WEBSITE

Important notice: Robsons, their clients and any joint agents give notice that 1: They are not authorised to make or give any representations or warranties in relation to the property either here or elsewhere, either on their own behalf or on behalf of their client or otherwise. They assume no responsibility for any statement that may be made in these particulars. These particulars do not form part of any offer or contract and must not be relied upon as statements or representations of fact. 2: Any areas, measurements or distances are approximate. Plot sizes and dimensions are taken from Promap and are approximate. The text, photographs and plans are for guidance only and are not necessarily comprehensive. It should not be assumed that the property has all necessary planning, building regulation or other consents and Robsons have not tested any services, equipment or facilities. Purchasers must satisfy themselves by inspection or otherwise.