



A SPACIOUS FIRST FLOOR TWO BEDROOM, TWO BATHROOM APARTMENT

Elder Court, Green Lane, Northwood, Middlesex, HA6 2XP



Elder Court, Green Lane, Northwood, Middlesex,
HA6 2XP

**FIRST FLOOR • TWO BEDROOMS • TWO
BATHROOMS • LIVING ROOM WITH
BALCONY • FITTED KITCHEN • OFF-STREET
PARKING • LIFT IN BLOCK • SHORT WALK TO
STATION**

Description

This well-presented first floor two bedroom, two bathroom apartment is in good order throughout and offers bright and spacious accommodation located moments from Northwood town centre.

The apartment comprises a generous living room filled with natural light and direct access to a private balcony. The fitted kitchen includes ample dining space, creating a practical and welcoming environment for both cooking and entertaining. Both bedrooms are well-proportioned and benefit from fitted wardrobes, with the main bedroom enjoying the added convenience of an en-suite shower room. A family bathroom serves the second bedroom and guests.

Additional features include lift access within the block, off-street parking, and a desirable location close to local amenities, shops, and the Metropolitan Line Station.





Northwood provides a range of shopping facilities including Waitrose supermarket, a variety of restaurants and other amenities with the Metropolitan Line station providing access to Baker Street and the City. There is a plethora of state and private schooling together with a wide choice of recreational facilities, which include golf courses and fitness centres. The M1, M40 and M25 motorways are also accessible.

NB this property is situated within the proximity of the ULEZ, if your vehicle does not comply charges may apply.

Additional Information

Tenure: Leasehold

Lease Length: 988 years remaining

Service Charge: Approx: £2,700 p/a

Local Authority: London Borough of Hillingdon

Council Tax Band: F

Energy Efficiency Rating: B

For additional information, please refer to www.robsonswb.com or call us on: 01923 835355.



Approximate Gross Internal Area
107.1 sq m / 1,153 sq ft

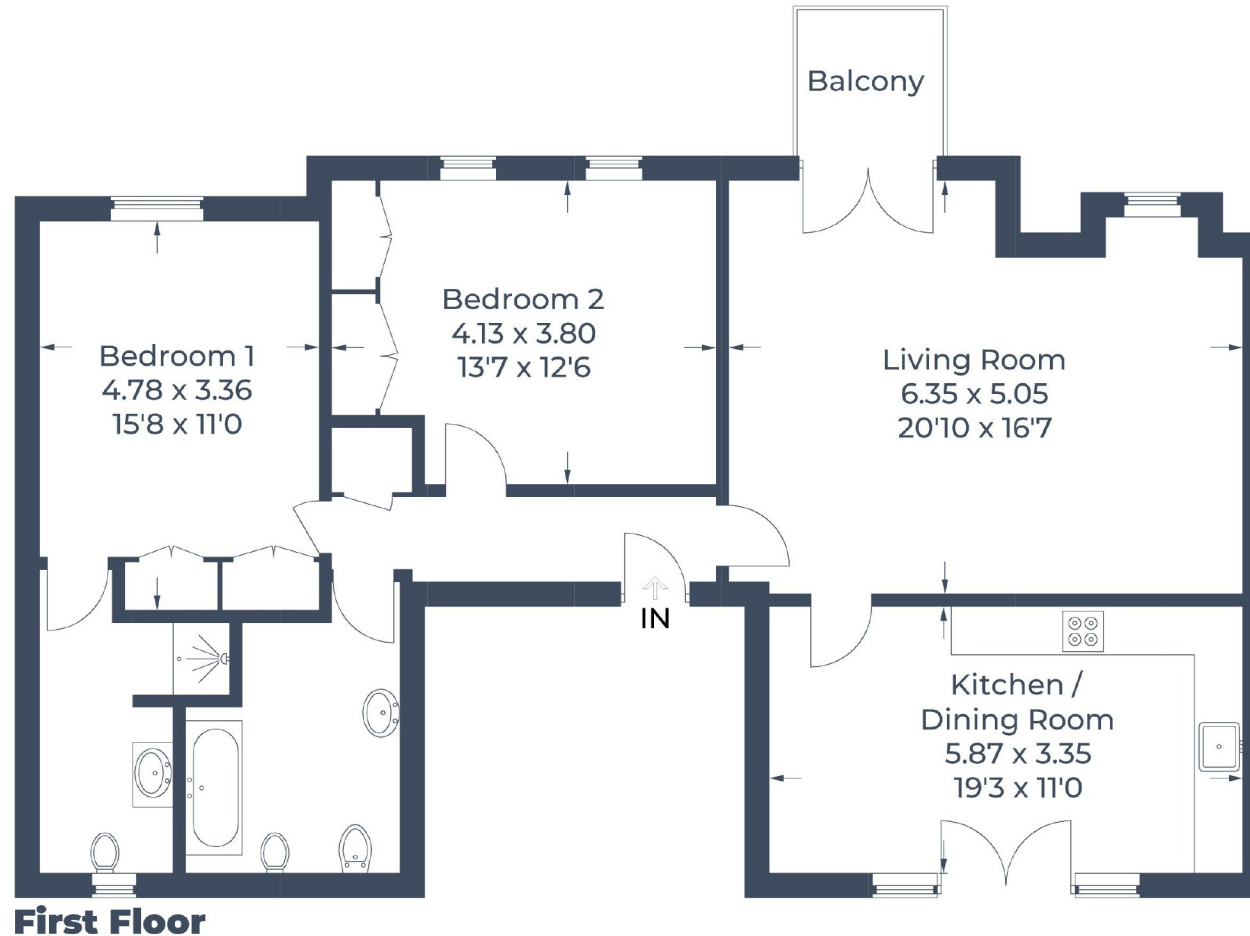


Illustration for identification purposes only,
measurements are approximate, not to scale.
© CJ Property Marketing

ROBSONS

7 Clive Parade, Northwood, HA6 2QF
Tel: 01923 835355 Email: northwood@robsonswb.com
www.robsonswb.com

SCAN TO VISIT



OUR WEBSITE

Important notice: Robsons, their clients and any joint agents give notice that 1: They are not authorised to make or give any representations or warranties in relation to the property either here or elsewhere, either on their own behalf or on behalf of their client or otherwise. They assume no responsibility for any statement that may be made in these particulars. These particulars do not form part of any offer or contract and must not be relied upon as statements or representations of fact. 2: Any areas, measurements or distances are approximate. Plot sizes and dimensions are taken from Promap and are approximate. The text, photographs and plans are for guidance only and are not necessarily comprehensive. It should not be assumed that the property has all necessary planning, building regulation or other consents and Robsons have not tested any services, equipment or facilities. Purchasers must satisfy themselves by inspection or otherwise.