



A BRIGHT AND SPACIOUS TOP FLOOR ONE BEDROOM APARTMENT

Chester Court, Chester Road, Northwood, HA6 1BQ

ROBSONS

Chester Court, Chester Road, Northwood, HA6 1BQ

**TOP FLOOR SOUTH FACING APARTMENT •
LIVING/DINING ROOM • KITCHEN • DOUBLE
BEDROOM • BATHROOM • SUBSTANTIAL
LOFT SPACE • COMMUNAL GARDENS • ONE
ALLOCATED PARKING SPACE • CLOSE TO
LOCAL AMENITIES & TRANSPORT LINKS**

Description

This top floor one bedroom purpose built south-facing apartment is situated conveniently within the heart of Northwood in a well-maintained block of just several apartments and benefits from a reserved parking space and generous loft space.

This well-kept apartment enjoys attractive views across Northwood, taking advantage of its evaluated position. The property provides plenty of storage, a modern kitchen and bathroom, a large living/dining room and a double bedroom with fitted wardrobes.





Chester Court is a well-maintained development with neatly kept communal areas. Located on Chester Road, the apartment is within easy reach of Northwood's shops, cafés, and is a 5 minute walk to the Underground station, providing fast links into central London. Local parks, leisure facilities, and transport connections are all close by, making this an attractive option for first-time buyers, downsizers, or investors.

Location

Northwood provides a range of shopping facilities including Waitrose supermarket, a variety of restaurants and other amenities with the Metropolitan Line station providing access to Baker Street and the City. There is a plethora of state and private schooling together with a wide choice of recreational facilities, which include golf courses and fitness centres. The M1, M40 and M25 motorways are also accessible.

NB this property is situated within the proximity of the ULEZ, if your vehicle does not comply charges may apply.

Additional Information

Tenure: Share of Freehold

Local Authority: Hillingdon

Council Tax Band: C

Energy Efficiency Rating: C

Lease Term: 125 years from 25th March 2008

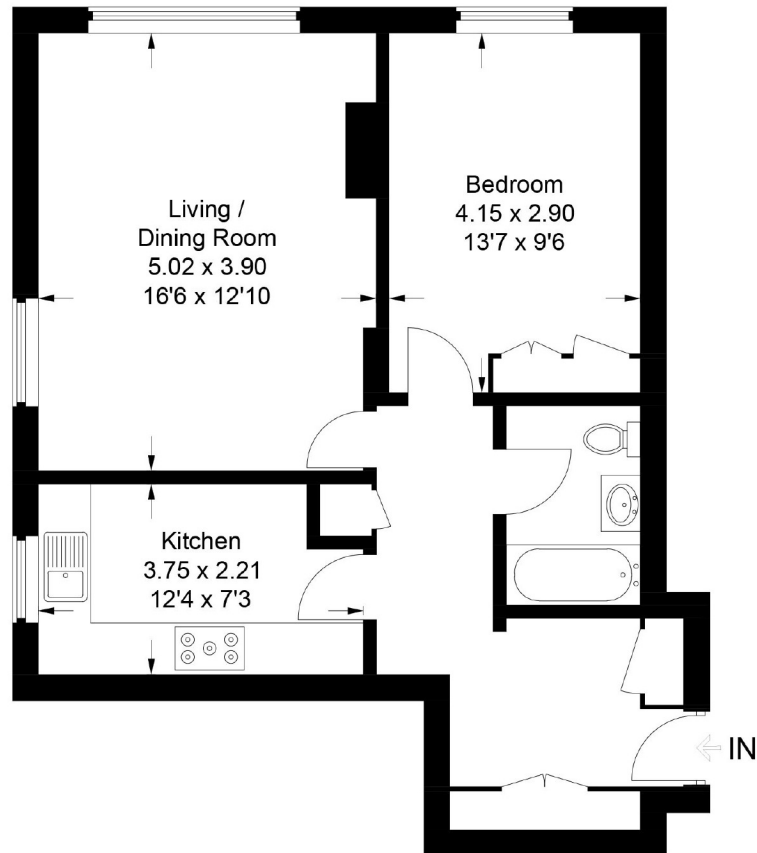
Service Charge: £3,180 pa

For additional information, please refer to www.robsonsworld.com or call us on: 01923 835355.



Chester Court

Approximate Gross Internal Area
56.5 sq m / 608 sq ft



This plan is for layout guidance only. Not drawn to scale unless stated. Windows and door openings are approximate. Whilst every care is taken in the preparation of this plan, please check all dimensions, shapes and compass bearings before making any decisions reliant upon them.
© CJ Property Marketing Ltd Produced for Robsons

ROBSONS

7 Clive Parade, Northwood, HA6 2QF
Tel: 01923 835355 Email: northwood@robsonswb.com
www.robsonswb.com

SCAN TO VISIT



OUR WEBSITE

Important notice: Robsons, their clients and any joint agents give notice that 1: They are not authorised to make or give any representations or warranties in relation to the property either here or elsewhere, either on their own behalf or on behalf of their client or otherwise. They assume no responsibility for any statement that may be made in these particulars. These particulars do not form part of any offer or contract and must not be relied upon as statements or representations of fact. 2: Any areas, measurements or distances are approximate. Plot sizes and dimensions are taken from Promap and are approximate. The text, photographs and plans are for guidance only and are not necessarily comprehensive. It should not be assumed that the property has all necessary planning, building regulation or other consents and Robsons have not tested any services, equipment or facilities. Purchasers must satisfy themselves by inspection or otherwise.