



A 3 BEDROOM GROUND FLOOR APARTMENT IN GATED DEVELOPMENT

Eastbury Avenue, Northwood, Middlesex HA6 3HS

ROBSONS

A 3 BEDROOM GROUND FLOOR APARTMENT IN GATED DEVELOPMENT

Eastbury Avenue, Northwood, Middlesex HA6 3HS

**LIVING/DINING ROOM • KITCHEN •
CLOAKROOM • PRINCIPAL BEDROOM WITH
ENSUITE SHOWER ROOM • TWO FURTHER
BEDROOMS ONE CURRENTLY USED AS A
STUDY • BATHROOM • TWO ALLOCATED
PARKING SPACES • COMMUNAL GROUNDS •**

Description

A rarely available three bedroom ground floor apartment, offered to the market with a benefit of no onward chain. The apartment is set back off Eastbury Avenue within a beautiful treeline perimeter, gated entrance to two allocated parking spaces and well maintained communal areas.

The property has a large lounge with French doors leading to a quiet outside space. Offering flexible accommodation with three bedrooms, one providing versatility of being an office or walk in wardrobe. The kitchen provides ample space for a dining table. The apartment benefits from an abundance of natural light.





Location

Northwood provides a range of shopping facilities, a Waitrose supermarket, restaurants and the Metropolitan Line Station providing access to Baker Street and the city beyond. The area has a range of both private and state schools. Places of worship and recreational facilities are also well catered for in the surrounding area and major motorway links to M25 and M1 are nearby.

Additional Information

Tenure: Share of Freehold

Lease: 992 years remaining

Service Charge: £2,350.00 per annum

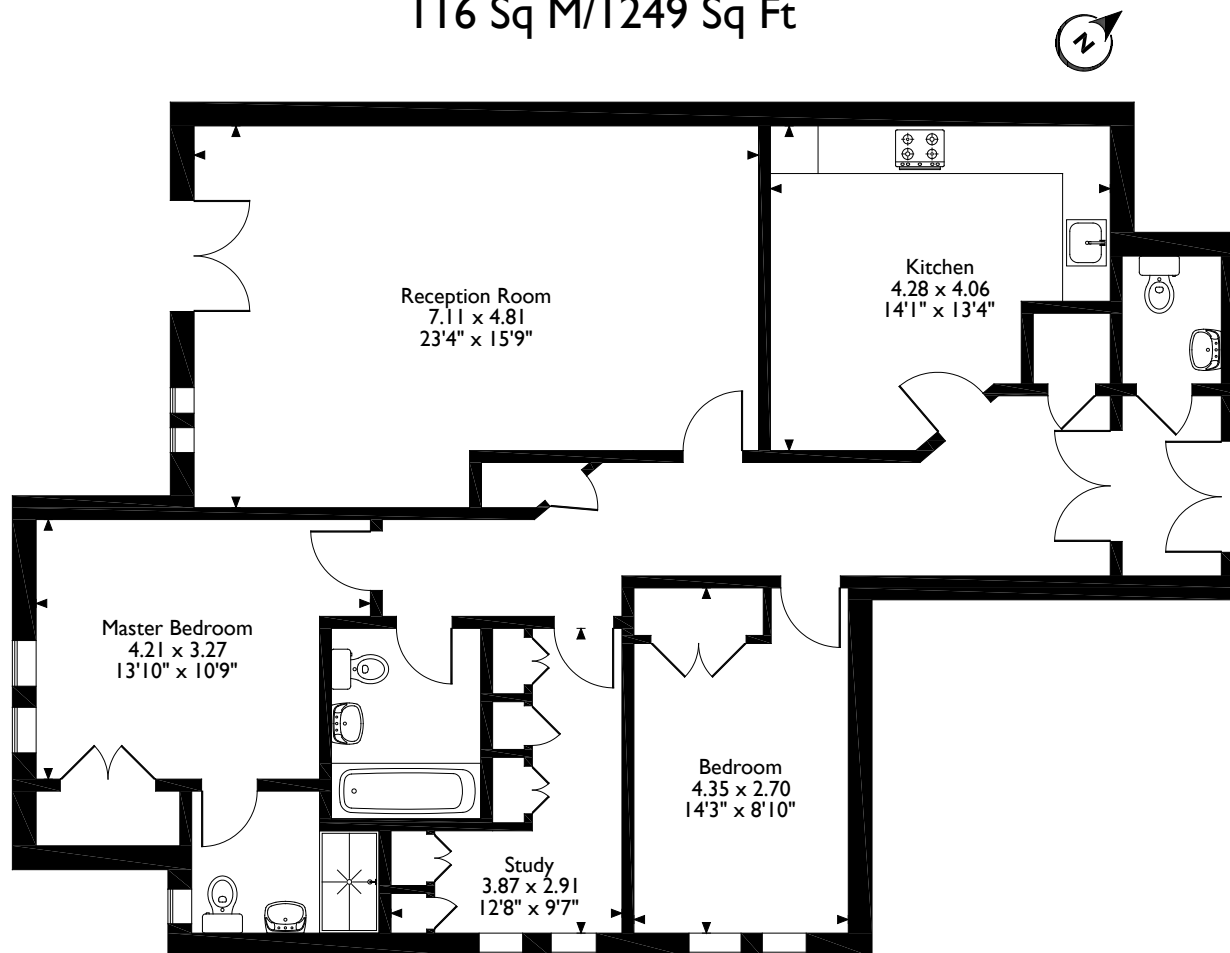
Council: Three Rivers District Council

Council Tax Band: G

Energy Efficiency Rating Band: C



Eastbury Avenue, Northwood
Approximate Gross Internal Area
116 Sq M/1249 Sq Ft



Please note that the location of doors, windows and other items are approximate and this floorplan is to be used for illustrative purposes only. Unauthorized reproduction is prohibited.

ROBSONS

7 Clive Parade, Northwood, Middlesex HA6 2QF
Tel: 01923 835355 northwood@robsonswb.com

www.robsonswb.com

www.the-londonoffice.co.uk
40 ST JAMES'S PLACE SW1

Important notice: Robsons, their clients and any joint agents give notice that 1: They are not authorised to make or give any representations or warranties in relation to the property either here or elsewhere, either on their own behalf or on behalf of their client or otherwise. They assume no responsibility for any statement that may be made in these particulars. These particulars do not form part of any offer or contract and must not be relied upon as statements or representations of fact. 2: Any areas, measurements or distances are approximate. Plot sizes and dimensions are taken from Promap and are approximate. The text, photographs and plans are for guidance only and are not necessarily comprehensive. It should not be assumed that the property has all necessary planning, building regulation or other consents and Robsons have not tested any services, equipment or facilities. Purchasers must satisfy themselves by inspection or otherwise.