



A SPACIOUS & WELL PRESENTED FOUR BEDROOM, TWO BATHROOM DETACHED FAMILY HOME

Upper Hill Rise, Rickmansworth, Hertfordshire, WD3 7NU

ROBSONS

Upper Hill Rise, Rickmansworth, Hertfordshire, WD3 7NU

LIVING ROOM • KITCHEN/DINING ROOM • CONSERVATORY • STUDY • GUEST CLOAKROOM • PRINCIPAL BEDROOM WITH ENSUITE • THREE FURTHER BEDROOMS • FAMILY BATHROOM • WELL MAINTAINED REAR GARDEN • OFF-STREET PARKING

Description

Presenting this spacious, four bedroom, two bathroom detached family home offering a total of 2,038 sq.ft. of comfortable living accommodation and forming part of the exclusive and highly desirable Cedars Estate. This lovely home is ideally situated for excellent schools, transport links and local amenities.

The ground floor comprises an entrance hallway leading to a study and a guest cloakroom. French doors open into a spacious hallway with stairs to the first floor and access to a front aspect kitchen/dining room, a living room and a light and bright conservatory, with French doors opening out to the garden. The kitchen features modern fitted units providing ample storage space, integrated appliances and plenty of room for a large dining table and chairs.





To the first floor there is a light and spacious landing leading to a principal bedroom with ensuite shower room, three further bedrooms and a family bathroom.

Externally, this family home offers a well-maintained rear garden, laid to lawn and access to a garage at the rear of the garden. To the front is a driveway providing off-street parking and side access to the rear garden.

Location

Rickmansworth town centre has a wide range of boutique shops, coffee houses, restaurants and major supermarkets. The Metropolitan and Chiltern line train services connect you to London Baker Street, Marylebone Station and beyond. The M25 motorway is available at both junction 17 and 18, connecting you to the national motorway network. Major London airports are also within reach. The area is well served for good quality private and state schools for all ages. Chorleywood and Rickmansworth offer everything for the sporting individual from rugby, cricket, football, tennis, horse riding and golf. Rickmansworth Aquadrome is an ideal setting for walks, sailing, fishing and water skiing.

Additional Information

Tenure: Freehold

Local Authority: Three Rivers District Council

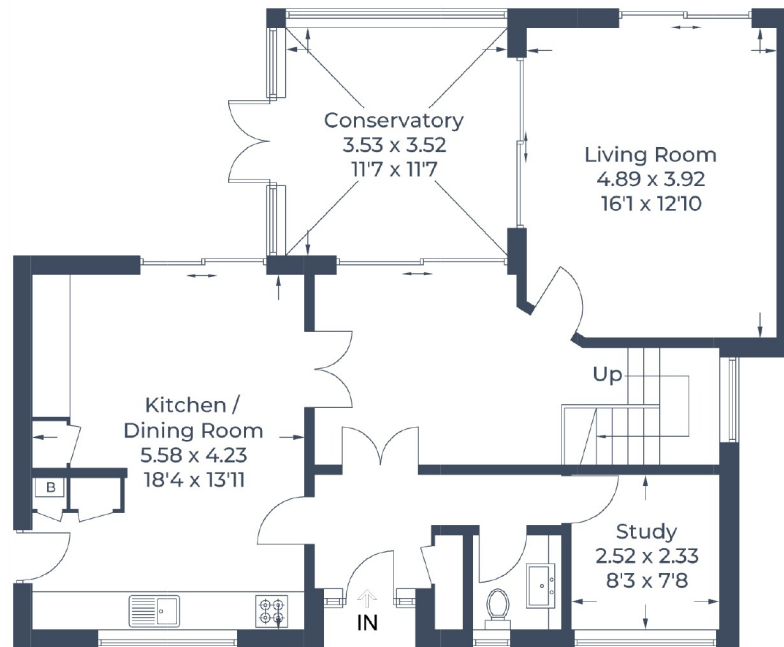
Council Tax Band: G

Energy Efficiency Rating: D

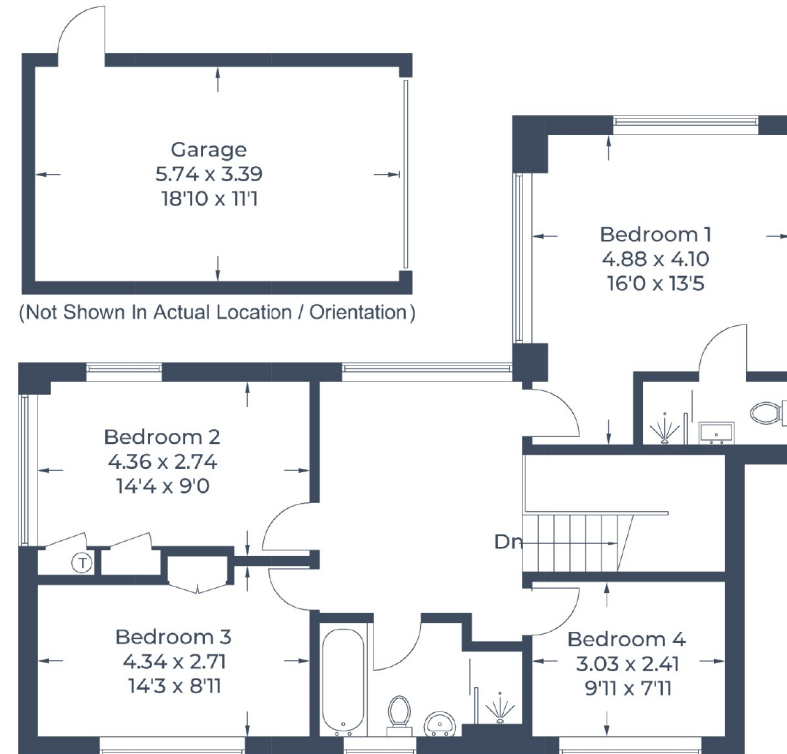
For additional information, please refer to www.robsonswb.com or call us on: 01923 777762.



Approximate Gross Internal Area = 169. sq m / 1,829 sq f
 Garage = 19.4 sq m / 209 sq ft
 Total = 189.3 sq m / 2,038 sq ft



Ground Floor



First Floor

Illustration for identification purposes only,
 measurements are approximate, not to scale.
 © CJ Property Marketing Produced for Robsons

ROBSONS

130 High Street, Rickmansworth WD3 1AB
 Tel: 01923 777762 Email: rickmansworth@robsonswb.com

www.robsonswb.com

SCAN TO VISIT



OUR WEBSITE

Important notice: Robsons, their clients and any joint agents give notice that 1: They are not authorised to make or give any representations or warranties in relation to the property either here or elsewhere, either on their own behalf or on behalf of their client or otherwise. They assume no responsibility for any statement that may be made in these particulars. These particulars do not form part of any offer or contract and must not be relied upon as statements or representations of fact. 2: Any areas, measurements or distances are approximate. Plot sizes and dimensions are taken from Promap and are approximate. The text, photographs and plans are for guidance only and are not necessarily comprehensive. It should not be assumed that the property has all necessary planning, building regulation or other consents and Robsons have not tested any services, equipment or facilities. Purchasers must satisfy themselves by inspection or otherwise.