



A four bedroom family set in the popular Harrow Garden Village
Romney Drive, Harrow, HA2 7EG



Asking Price: £3,500 pcm

A four bedroom family set in the popular Harrow Garden Village

Romney Drive, Harrow, HA2 7EG

• ENTRANCE HALL • RECEPTION ROOM • OPEN PLAN KITCHEN/DINING ROOM • OFFICE • CLOAKROOM • MAIN BEDROOM WITH FITTED WARDROBES AND ENSUITE BATHROOM • THREE FURTHER BEDROOMS • BATHROOM • REAR GARDEN • DRIVEWAY • UNFURNISHED

Description

Situated within the heart of the ever popular Harrow Garden Village, Robsons of Pinner are pleased to market a well presented detached family home. Internally offering to the ground floor; a spacious living room, separate dining room, a spacious lounge and an open plan kitchen. The first floor offers; four spacious double bedrooms (one with en-suite bathroom) and a family bathroom. Externally the property has a driveway with parking for multiple cars and a stunning landscaped rear garden.

**** An advance reservation payment of one weeks rent is required to secure the property ****

Location

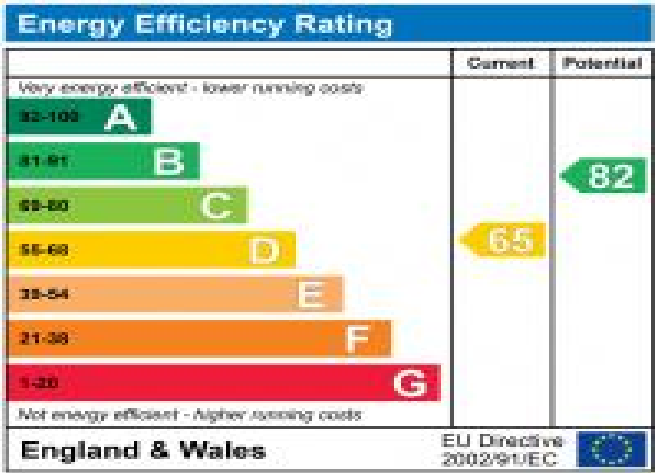
Romney Drive is between North Harrow and Rayners Lane shopping and transport facilities which includes the Metropolitan Line Train Station at North Harrow and the Metropolitan/Piccadilly Line Station at Rayners Lane. The area is well served with a wide choice of state and private schools for all ages, recreational facilities and places of worship.





Additional Information

- Local Authority: Harrow
- Council Tax Band: F
- Deposit Amount: £4,038.00
- Reservation Payment: One weeks rent
- Energy Efficiency Rating: Band D
- Available Date: 20/10/2025



Approximate Gross Internal Area
 Ground Floor = 97.4 sq m / 1,048 sq ft
 First Floor = 77.5 sq m / 834 sq ft
 Garage = 25.2 sq m / 271 sq ft
 Total = 200.1 sq m / 2,153 sq ft

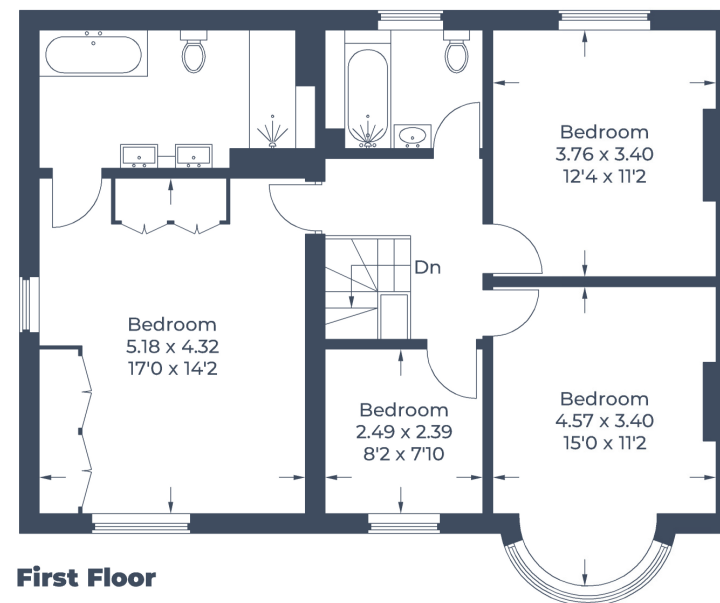
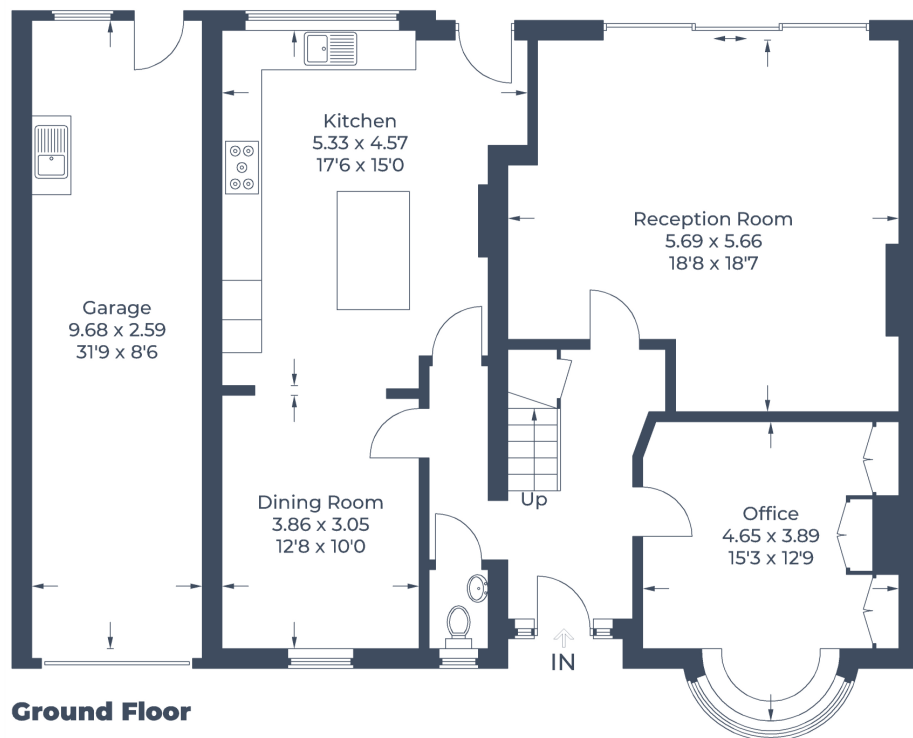


Illustration for identification purposes only,
 measurements are approximate, not to scale.
 © CJ Property Marketing Produced for Robsons

