



A one bedroom ground floor flat in an ideal central location
Church Street, Rickmansworth, WD3 1DQ



Asking Price: £1,300 pcm

A one bedroom ground floor flat in an ideal central location

Church Street, Rickmansworth, WD3 1DQ

• MODERN KITCHEN • LOUNGE • BEDROOM • MODERN SHOWER ROOM • ALLOCATED PARKING SPACE TO REAR • TOWN CENTRE LOCATION • UNFURNISHED

Description

A charming one bedroom ground floor flat in the heart of Rickmansworth Town Centre providing the perfect blend of convenience and comfort, with easy access to local shops, restaurants, and public transport links. The flat features a spacious living area, modern fitted kitchen, a generously sized bedroom and bathroom. Further benefits include a dedicated parking space, providing added convenience in a central location.

**** An advance reservation payment of one weeks rent is required to secure the property ****

Location

Rickmansworth town centre has a wide range of boutique shops, coffee houses, restaurants and major supermarkets. The Metropolitan and Chiltern line train services connect you to London Baker Street, Marylebone Station and beyond. The M25 motorway is available at both junction 17 and 18 connecting you to the national motorway network. Major London airports are also within reach. Chorleywood and Rickmansworth offer everything for the sporting individual from cricket, football, tennis, horse riding and golf. Rickmansworth Aquadrome is well catered for walks, sailing, fishing and water skiing sports.





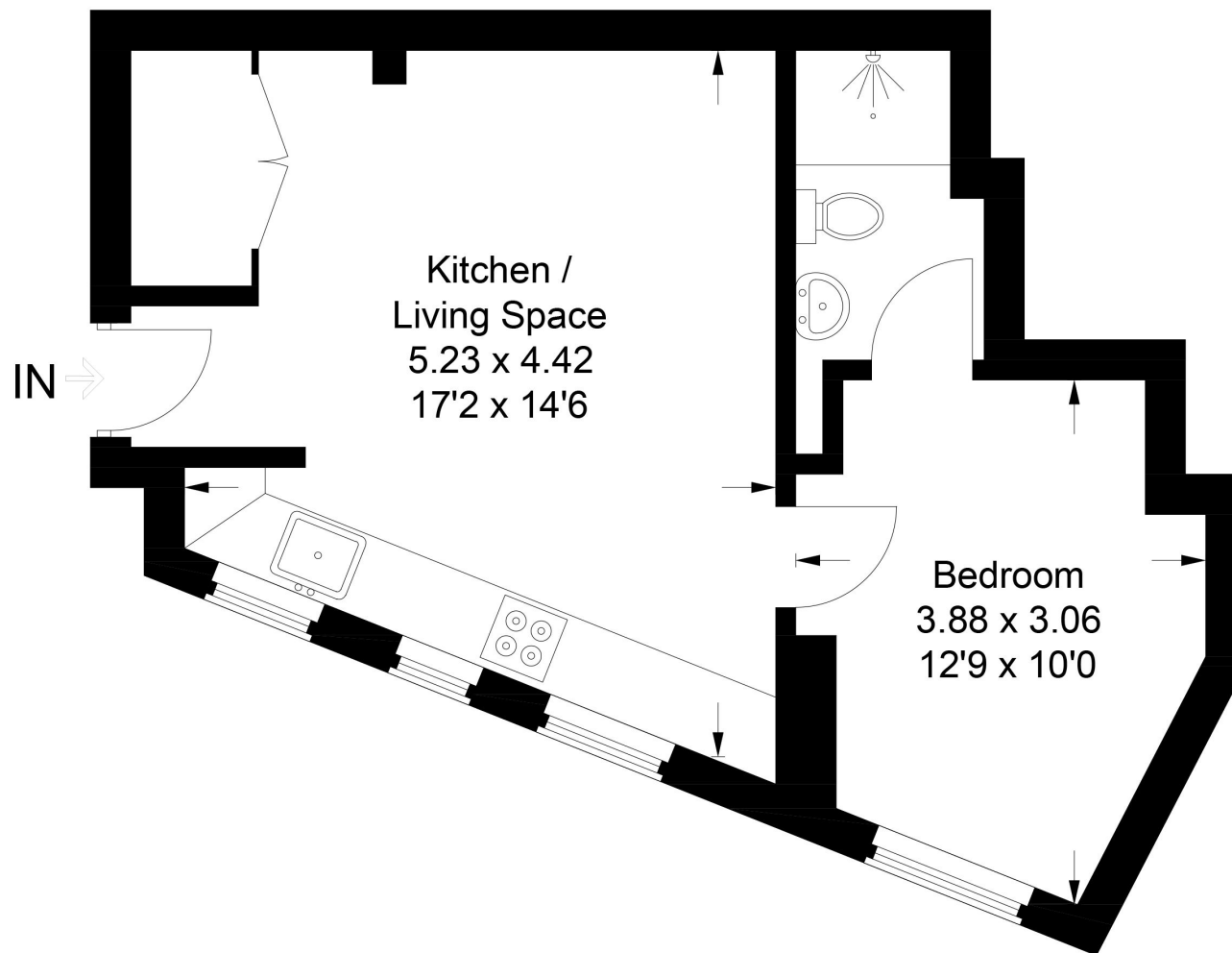
Additional Information

- Local Authority: Three Rivers
- Council Tax Band:
- Deposit Amount: £1,800.00
- Reservation Payment: One weeks rent
- Energy Efficiency Rating: Band D
- Available Date: 07/10/2025



Church Street, Rickmansworth, WD3 1DQ

Approximate Gross Internal Area
35.1 sq m / 378 sq ft



This plan is for layout guidance only. Not drawn to scale unless stated. Windows and door openings are approximate. Whilst every care is taken in the preparation of this plan, please check all dimensions, shapes and compass bearings before making any decisions reliant upon them.
© CJ Property Marketing Ltd Produced for Robsons

