



A WELL-MAINTAINED FOUR BEDROOM, THREE BATHROOM FAMILY HOME

Sylvia Avenue, Pinner, HA5 4QN

ROBSONS

Sylvia Avenue, Pinner, HA5 4QN

ENTRANCE HALLWAY • LOUNGE • LIVING / DINING / KITCHEN ROOM • STUDY • FOUR BEDROOMS • THREE BATHROOMS (ONE EN-SUITE) • REAR GARDEN • OFF-STREET PARKING • GARAGE

Description

Offering the perfect balance of family living and convenience, this four-bedroom, three-bathroom property is located in a desirable part of Hatch End, within walking distance of local amenities, transport links, and the highly regarded Grimsdyke Primary School.

The ground floor comprises a front aspect lounge, an open-plan living/dining/kitchen area with patio doors opening out to the garden, a study, and a shower room & WC. There is a principal bedroom with an en-suite shower room on the first floor, along with three further bedrooms and a family bathroom.





A good-sized rear garden boasting two patio areas and a well-kept lawn completes the property, with off-street parking for multiple cars and a garage at the front of the property.

Location

Sylvia Avenue is a sought-after road within walking distance of Hatch End high street and a variety of shopping facilities, restaurants, coffee houses and popular supermarkets. For commuters, Hatch End Station provides a regular service to London Euston via the Overground, with access to local bus routes along Hatch End High Street. Alternatively, Pinner High Street is close by with Pinner Station providing the Metropolitan Line.

The area is well served by local primary and secondary schooling, with Grimsyke Primary School (Ofsted - Outstanding) just a stone's throw away, as well as local parks and playgrounds.

Additional Information

Tenure: Freehold

Local Authority: London Borough of Harrow

Council Tax Band: F

Energy Efficiency Rating: TBC

For additional information, please refer to www.robsonsworld.com or call us on: 020 8866 8083.



Approximate Gross Internal Area
 Ground Floor = 70.8 sq m / 762 sq ft
 First Floor = 55.7 sq m / 599 sq ft
 Garage = 14.7 sq m / 158 sq ft
 Total = 141.2 sq m / 1,519 sq ft

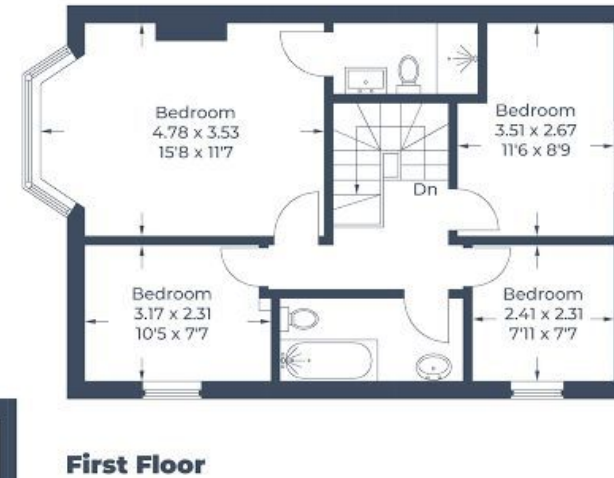
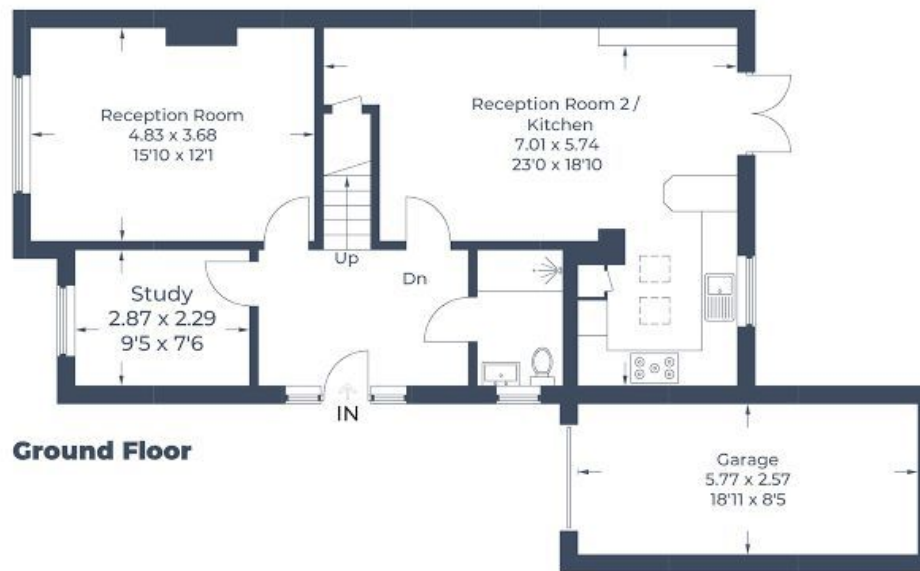


Illustration for identification purposes only,
 measurements are approximate, not to scale.
 © CJ Property Marketing Produced for Robsons

ROBSONS

1 High Street, Pinner HA5 5PJ
 Tel: 020 8866 8083 Email: pinner@robsonswb.com
www.robsonswb.com

SCAN TO VISIT



OUR WEBSITE

Important notice: Robsons, their clients and any joint agents give notice that 1: They are not authorised to make or give any representations or warranties in relation to the property either here or elsewhere, either on their own behalf or on behalf of their client or otherwise. They assume no responsibility for any statement that may be made in these particulars. These particulars do not form part of any offer or contract and must not be relied upon as statements or representations of fact. 2: Any areas, measurements or distances are approximate. Plot sizes and dimensions are taken from Promap and are approximate. The text, photographs and plans are for guidance only and are not necessarily comprehensive. It should not be assumed that the property has all necessary planning, building regulation or other consents and Robsons have not tested any services, equipment or facilities. Purchasers must satisfy themselves by inspection or otherwise.