



A THREE BEDROOM CHAIN FREE PROPERTY WITH SCOPE TO EXTEND (STPP)

Lyndhurst Avenue, Pinner, HA5 3XA

ROBSONS

Lyndhurst Avenue, Pinner, HA5 3XA

**CHAIN FREE • GUEST WC • LOUNGE •
KITCHEN / DINING ROOM • THREE
BEDROOMS • FAMILY BATHROOM, SEPARATE
WC • LARGE REAR GARDEN • OFF-STREET
PARKING • GARAGE • SCOPE TO EXTEND
(STPP)**

Description

A bright and very well-maintained three-bedroom, semi-detached home, available to the market with no onward chain, boasting a sizeable rear garden, off-street parking and scope to extend (STPP). Perfect for families, the property is located within walking distance of Pinner Wood Primary School, with Northwood Secondary School also close by.

The ground floor comprises an entrance hallway with a guest WC, a front aspect lounge, and a generous kitchen / dining room with access to the garden. There are two good-sized double bedrooms to the first floor, both with fitted wardrobes, a third bedroom, and a family bathroom with a separate WC





The property features a sizeable rear garden that is laid to lawn with a variety of shrubs, a decking area, and a shed. Off-street parking for multiple cars is available at the front of the property, along with access to the garage.

Location

Lyndhurst Avenue is located off Pinner Hill Road within easy reach of Pinner, Northwood Hills and Hatch End, which all offer a choice of shopping facilities, restaurants, coffee houses and popular supermarkets. For commuters, nearby Northwood Hills Underground Station provides a frequent service into London via the Metropolitan Line, as does Pinner Station, with the Overground available at Hatch End Station just a short distance away.

The area is well served by primary and secondary schooling, with Pinner Wood Primary School a few minutes' walk away, and Northwood Secondary School a short distance away.

Additional Information

Tenure: Freehold

Local Authority: London Borough of Harrow

Council Tax Band: E

Energy Efficiency Rating: TBC

For additional information, please refer to www.robsonsworld.com or call us on: 020 8866 8083.



Approximate Gross Internal Area
 Ground Floor = 38.5 sq m / 414 sq ft
 First Floor = 38.1 sq m / 410 sq ft
 Garage = 16.3 sq m / 175 sq ft
 Total = 92.9 sq m / 999 sq ft

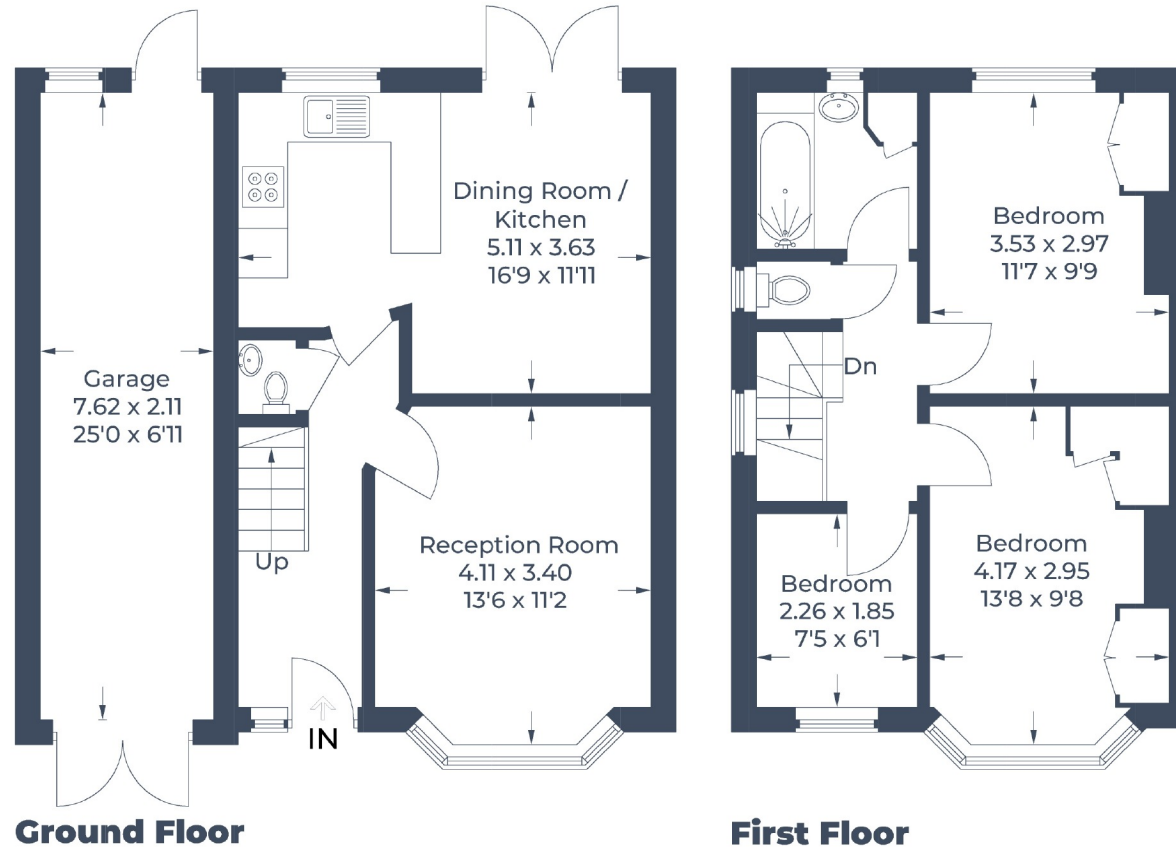


Illustration for identification purposes only,
 measurements are approximate, not to scale.
 © CJ Property Marketing Produced for Robsons

ROBSONS

1 High Street, Pinner HA5 5PJ
 Tel: 020 8866 8083 Email: pinner@robsonswb.com
www.robsonswb.com

SCAN TO VISIT



OUR WEBSITE

Important notice: Robsons, their clients and any joint agents give notice that 1: They are not authorised to make or give any representations or warranties in relation to the property either here or elsewhere, either on their own behalf or on behalf of their client or otherwise. They assume no responsibility for any statement that may be made in these particulars. These particulars do not form part of any offer or contract and must not be relied upon as statements or representations of fact. 2: Any areas, measurements or distances are approximate. Plot sizes and dimensions are taken from Promap and are approximate. The text, photographs and plans are for guidance only and are not necessarily comprehensive. It should not be assumed that the property has all necessary planning, building regulation or other consents and Robsons have not tested any services, equipment or facilities. Purchasers must satisfy themselves by inspection or otherwise.