



**STUNNING FIVE BEDROOM EXTENDED SEMI DETACHED FAMILY HOME WITH
HEATED BASEMENT POOL, GARDEN OFFICE & RIVER VIEWS**

Uxbridge Road, Rickmansworth, Hertfordshire, WD3 7DJ

ROBSONS

Uxbridge Road, Rickmansworth, Hertfordshire, WD3 7DJ

OPEN PLAN KITCHEN/RECEPTION ROOM • CONSERVATORY • SECOND RECEPTION ROOM • UTILITY ROOM & GUEST WC • PRINCIPAL BEDROOM WITH EN-SUITE • FOUR FURTHER BEDROOMS, ONE WITH EN-SUITE • SHOWER ROOM • HEATED SWIMMING POOL & STEAM ROOM • SOUTH FACING GARDEN WITH HOME OFFICE • OFF-STREET PARKING

Description

This exceptional extended five-bedroom, four-bathroom/guest WC semi-detached family home offers an abundance of versatile living space and unique lifestyle features, including a heated indoor swimming pool, a garden office, and direct views of the River Colne.

A light-filled entrance hall leads to a utility room with guest WC, and a welcoming front-aspect reception room. To the rear, a breathtaking open-plan kitchen/reception area is anchored by a striking feature fireplace with wood-burning stove. The modern kitchen boasts an extensive range of stylish fitted units, integrated appliances, and a central island.





A conservatory seamlessly extends the space, with sliding glass doors that blur the boundaries between indoors and out, opening onto the rear garden.

The first floor hosts a luxurious principal bedroom with walk-in wardrobe and contemporary en-suite with his-and-hers basins. Three additional bedrooms, one with en-suite, and a family shower room complete this level. The second floor features a spacious fifth bedroom with patio doors to a Juliette balcony, offering elevated views.

The show-stopping 35'7 x 32'10 basement is home to a heated swimming pool, steam room, shower room, and bi-fold doors opening to a generous terrace, perfect for relaxing or entertaining.

The private, south-facing garden is laid to lawn with two separate terraces for al fresco dining, a detached garden office/studio, and a smaller terrace overlooking the tranquil River Colne. A driveway to the front provides off-street parking and side access to the rear garden.

Location

The area is well served for good quality private and state schools for all ages. Rickmansworth Aquadrome is an ideal setting for walks, sailing, fishing and water skiing.

Additional Information

Tenure: Freehold

Local Authority: Three Rivers District Council

Council Tax Band: E Energy Efficiency Rating: TBC

For additional information, please refer to www.robsonswb.com or call us on: 01923 777762.



Approximate Gross Internal Area
 Lower Ground Floor = 132.7 sq m / 1,428 sq ft
 Ground Floor = 119.7 sq m / 1,288 sq ft
 First Floor = 75.8 sq m / 816 sq ft
 Second Floor = 28.5 sq m / 307 sq ft
 Home Office / Studio = 17.9 sq m / 193 sq ft
 Total = 374.6 sq m / 4,032 sq ft

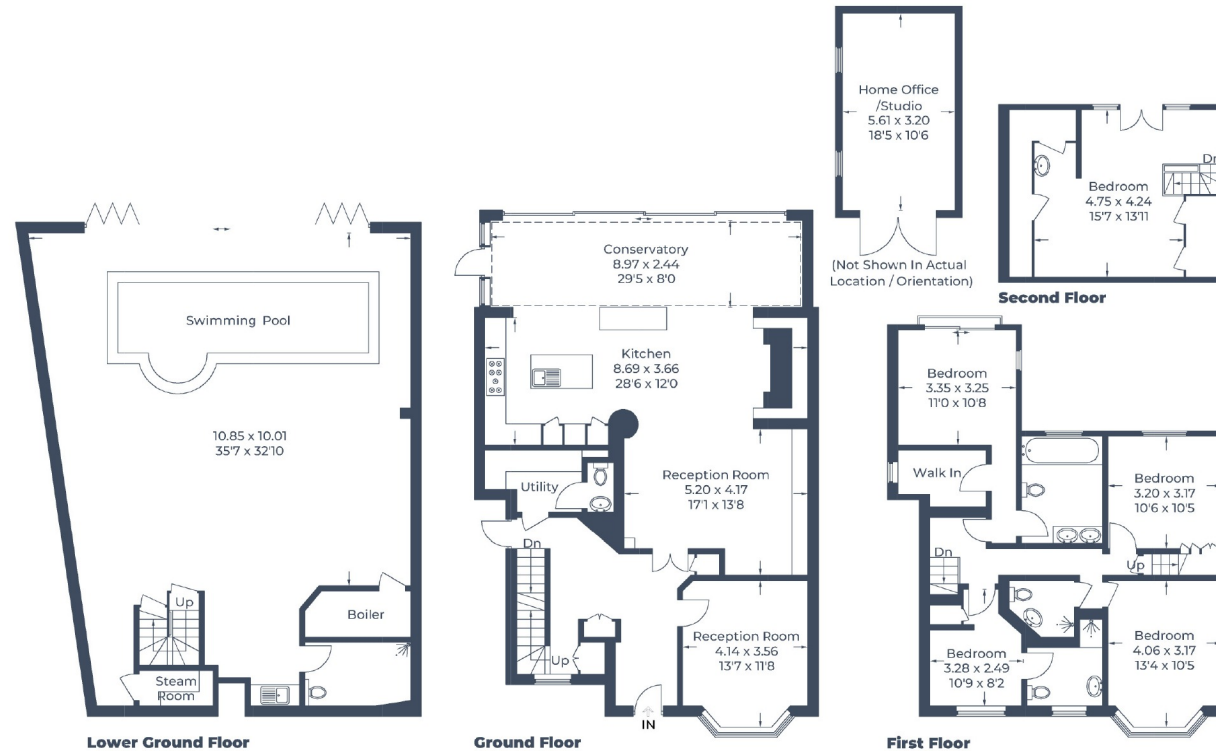


Illustration for identification purposes only,
 measurements are approximate, not to scale.
 © CJ Property Marketing Produced for Robsons

ROBSONS

130 High Street, Rickmansworth WD3 1AB
 Tel: 01923 777762 Email: rickmansworth@robsonswb.com
www.robsonswb.com

SCAN TO VISIT



OUR WEBSITE

Important notice: Robsons, their clients and any joint agents give notice that 1: They are not authorised to make or give any representations or warranties in relation to the property either here or elsewhere, either on their own behalf or on behalf of their client or otherwise. They assume no responsibility for any statement that may be made in these particulars. These particulars do not form part of any offer or contract and must not be relied upon as statements or representations of fact. 2: Any areas, measurements or distances are approximate. Plot sizes and dimensions are taken from Promap and are approximate. The text, photographs and plans are for guidance only and are not necessarily comprehensive. It should not be assumed that the property has all necessary planning, building regulation or other consents and Robsons have not tested any services, equipment or facilities. Purchasers must satisfy themselves by inspection or otherwise.