



## A WELL PRESENTED FIRST FLOOR TWO BEDROOM, TWO BATHROOM APARTMENT

Beechcroft, Eastbury Avenue, Northwood, Middlesex, HA6 3JS

**ROBSONS**

Beechcroft, Eastbury Avenue, Northwood, Middlesex,  
HA6 3JS

**FIRST FLOOR • TWO BEDROOMS • TWO  
BATHROOMS • SPACIOUS LIVING/DINING  
ROOM • FITTED KITCHEN • BALCONY •  
GATED • ALLOCATED PARKING**

### Description

This spacious and well-maintained two-bedroom, two-bathroom apartment is situated on the first floor and offers comfortable living in a sought-after residential development. The property is in good condition throughout and has been thoughtfully presented to a high standard.

The apartment features a bright and generously sized living/dining room with double doors opening onto a private balcony, perfect for relaxing or entertaining. A separate, well-appointed fitted kitchen includes ample storage and space for dining.

There are two well-proportioned bedrooms, with the main bedroom benefiting from an en-suite bathroom complete with his and hers sinks. A family bathroom serves the second bedroom and guests.

Further benefits include gated allocated parking and access to well-maintained communal gardens.





Northwood provides a range of shopping facilities including Waitrose supermarket, a variety of restaurants and other amenities with the Metropolitan Line station providing access to Baker Street and the City. There is a plethora of state and private schooling together with a wide choice of recreational facilities, which include golf courses and fitness centres. The M1, M40 and M25 motorways are also accessible.

NB this property is situated within the proximity of the ULEZ, if your vehicle does not comply charges may apply.

### **Additional Information**

Tenure: Leasehold

Lease Length: 125 years from 1 January 2004

Service Charge: £3,582.12 p/a

Local Authority: Three Rivers

Council Tax Band: F

Energy Efficiency Rating: B

For additional information, please refer to [www.robsonswb.com](http://www.robsonswb.com) or call us on: 01923 835355.



Approximate Gross Internal Area  
109.3 sq m / 1,176 sq ft

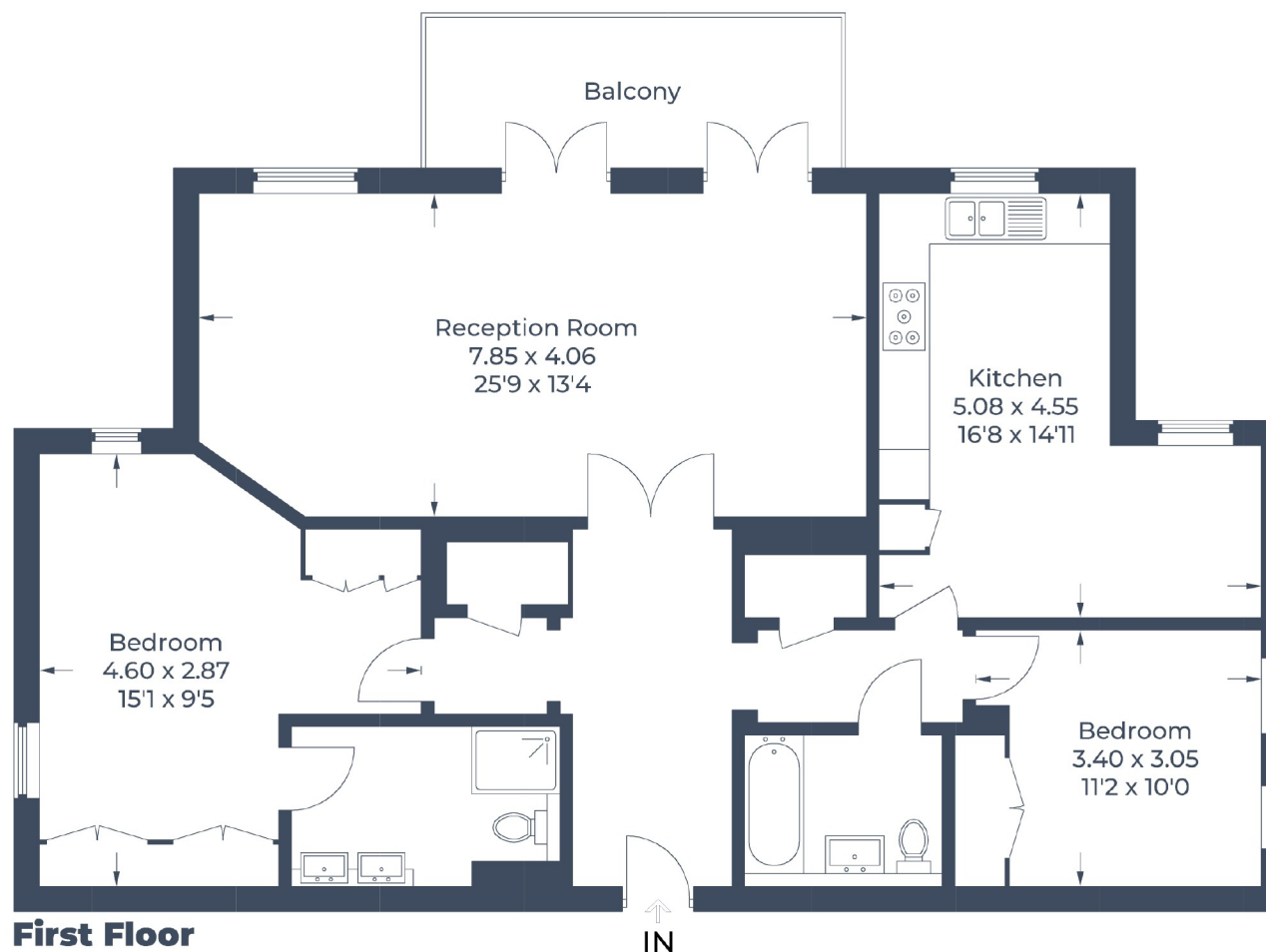


Illustration for identification purposes only,  
measurements are approximate, not to scale.  
© CJ Property Marketing Produced for Robsons

# ROBSONS

7 Clive Parade, Northwood, HA6 2QF  
Tel: 01923 835355 Email: northwood@robsonswb.com  
[www.robsonswb.com](http://www.robsonswb.com)

SCAN TO VISIT



OUR WEBSITE

Important notice: Robsons, their clients and any joint agents give notice that 1: They are not authorised to make or give any representations or warranties in relation to the property either here or elsewhere, either on their own behalf or on behalf of their client or otherwise. They assume no responsibility for any statement that may be made in these particulars. These particulars do not form part of any offer or contract and must not be relied upon as statements or representations of fact. 2: Any areas, measurements or distances are approximate. Plot sizes and dimensions are taken from Promap and are approximate. The text, photographs and plans are for guidance only and are not necessarily comprehensive. It should not be assumed that the property has all necessary planning, building regulation or other consents and Robsons have not tested any services, equipment or facilities. Purchasers must satisfy themselves by inspection or otherwise.