



A FIRST FLOOR 3 BEDROOM APARTMENT WITHIN A GATED DEVELOPMENT

Latimer Place, Eastbury Avenue, Northwood, Middlesex, HA6 3FD

ROBSONS

Latimer Place, Eastbury Avenue, Northwood,
Middlesex, HA6 3FD

**FIRST FLOOR • 3 BEDROOMS • 2 ENSUITE
BATHROOMS • LARGE RECEPTION ROOM •
FULLY FITTED KITCHEN • DOWNSTAIRS W/C •
2 UNDERGROUND PARKING SPACES**

Description

Set within a private gated development, this spacious three-bedroom first floor apartment offers a blend of comfort, convenience, and style.

The property features a welcoming entrance hallway leading to a generously proportioned living and dining room, ideal for both relaxing and entertaining. A separate, well-appointed fitted kitchen provides ample storage and workspace. There are two large double bedrooms, each with fitted wardrobes and en-suite bathrooms, and a further versatile third bedroom. A separate guest w.c which was once a family bathroom adds to the practicality of the layout.

Enjoying a peaceful outlook, the apartment benefits from a private balcony overlooking beautifully maintained communal gardens. Additional highlights include allocated underground parking for two vehicles.





Northwood provides a range of shopping facilities including Waitrose supermarket, a variety of restaurants and other amenities with the Metropolitan Line station providing access to Baker Street and the City. There is a plethora of state and private schooling together with a wide choice of recreational facilities, which include golf courses and fitness centres. The M1, M40 and M25 motorways are also accessible.

NB this property is situated within the proximity of the ULEZ, if your vehicle does not comply charges may apply.

Additional Information

Tenure: Share of Freehold

Lease Length: 999 years from and including 25 November 2020

Service Charge: £3,500 p/a

Local Authority: Three Rivers

Council Tax Band: G

Energy Efficiency Rating: B

For additional information, please refer to www.robsonswb.com or call us on: 01923 835355.



Approximate Gross Internal Area
139.8 sq m / 1,505 sq ft

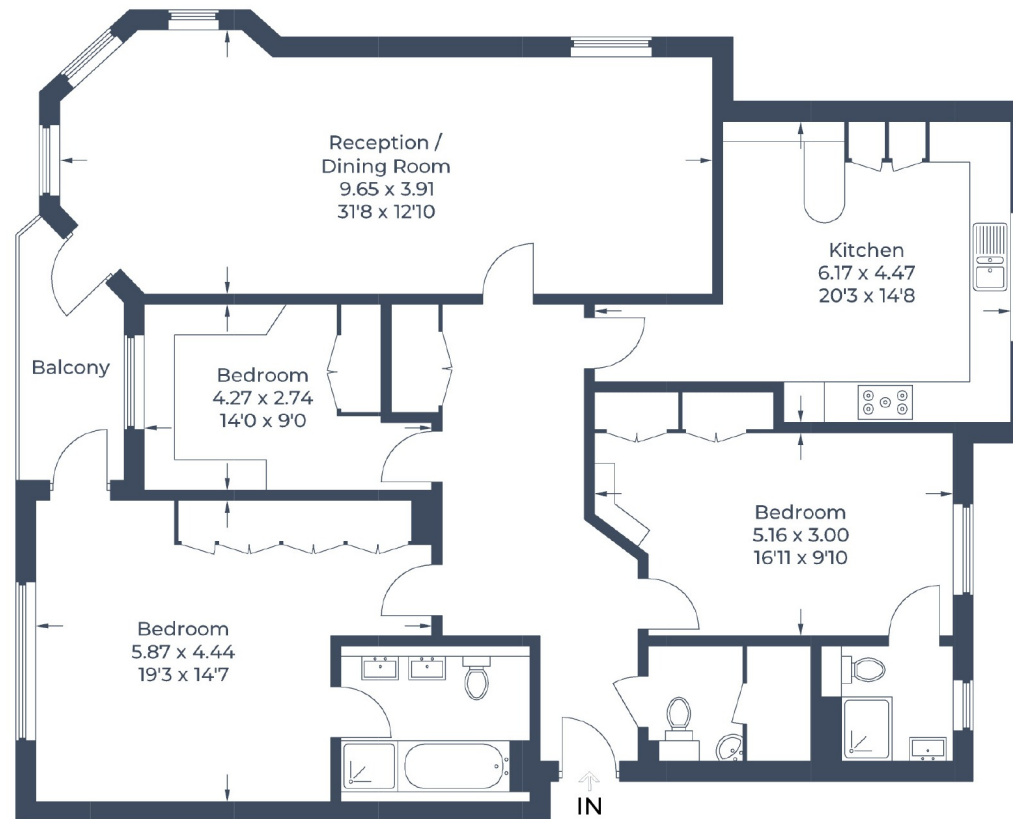


Illustration for identification purposes only,
measurements are approximate, not to scale.
© CJ Property Marketing Produced for Robsons

ROBSONS

7 Clive Parade, Northwood, HA6 2QF
Tel: 01923 835355 Email: northwood@robsonswb.com
www.robsonswb.com

SCAN TO VISIT



OUR WEBSITE

Important notice: Robsons, their clients and any joint agents give notice that 1: They are not authorised to make or give any representations or warranties in relation to the property either here or elsewhere, either on their own behalf or on behalf of their client or otherwise. They assume no responsibility for any statement that may be made in these particulars. These particulars do not form part of any offer or contract and must not be relied upon as statements or representations of fact. 2: Any areas, measurements or distances are approximate. Plot sizes and dimensions are taken from Promap and are approximate. The text, photographs and plans are for guidance only and are not necessarily comprehensive. It should not be assumed that the property has all necessary planning, building regulation or other consents and Robsons have not tested any services, equipment or facilities. Purchasers must satisfy themselves by inspection or otherwise.