



A two bedroom, two bathroom second floor apartment in a convenient location
Lily Close, Pinner, HA5 3JT

ROBSONS

Asking Price: £1,900 pcm

A two bedroom, two bathroom second floor apartment in a convenient location

Lily Close, Pinner, HA5 3JT

• COMMUNAL ENTRANCE HALL • ENTRANCE HALL • OPEN PLAN LIVING/KITCHEN • BALCONY • BEDROOM ONE WITH ENSUITE SHOWER ROOM • BEDROOM TWO • BATHROOM • ALLOCATED PARKING • BIKE SHED • SECURE KEY FOB AND CAMERA ENTRY • UNFURNISHED OR FURNISHED

Description

A two bedroom, two bathroom apartment in this modern development with a balcony. The property comprises with an entrance hallway, spacious open plan kitchen and living room with door leading out onto a balcony, two good sized bedrooms, principle bedroom with ensuite and wardrobe space and a family bathroom suite. There is ample storage throughout the flat. The property also benefits from allocated parking, bike shed, secure key fob and camera entry.

**** An advance reservation payment of one weeks rent is required to secure the property ****

Location

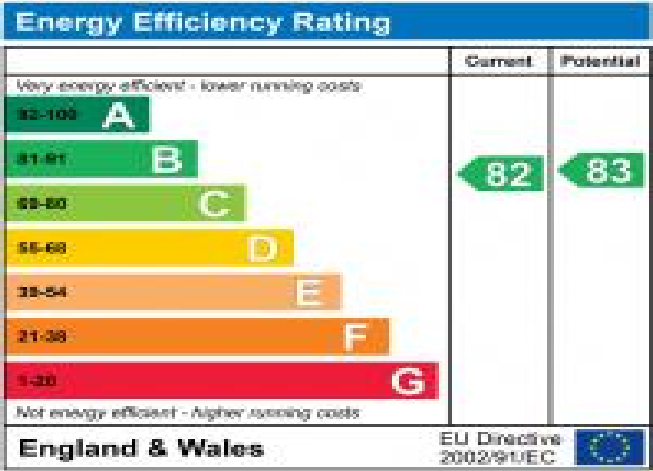
Lily Close is ideally situated just a short distance from shops, eateries, supermarkets and bus routes. Pinner and Northwood Hills stations both offer direct access into the heart of London via the Metropolitan Line. Also, to highlight Northwood School for secondary school is within walking distance



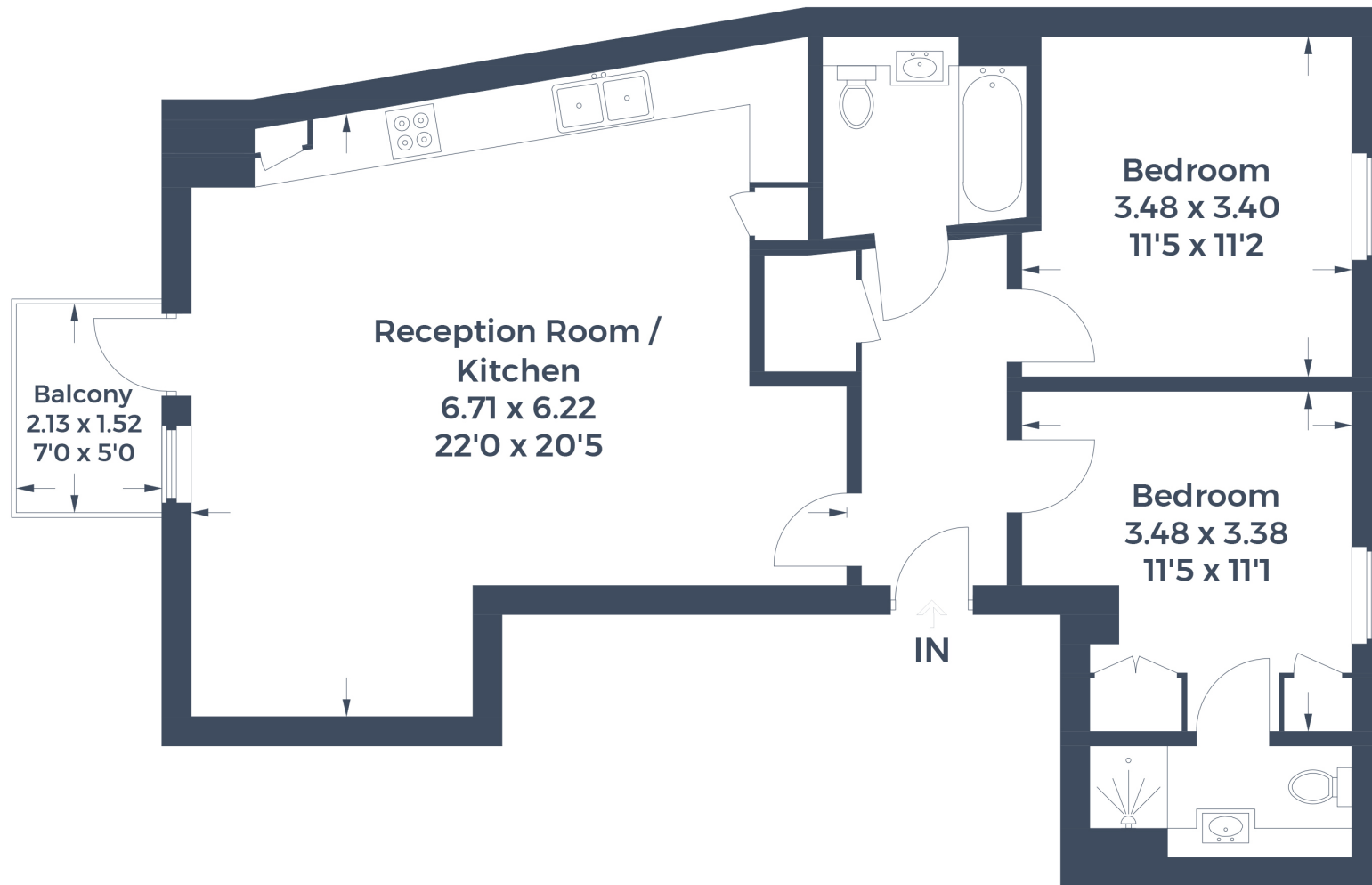


Additional Information

- Local Authority: Harrow
- Council Tax Band: D
- Deposit Amount: £2,192.00
- Reservation Payment: One weeks rent
- Energy Efficiency Rating: Band B
- Available Date: 03/11/2025



Approximate Gross Internal Area
75.9 sq m / 817 sq ft



This plan is for layout guidance only. Not drawn to scale unless stated. Windows and door openings are approximate. Whilst every care is taken in the preparation of this plan, please check all dimensions, shapes and compass bearings before making any decisions reliant upon them.

© CJ Property Marketing Produced for Robsons

