



A recently renovated fully furnished two bedroom apartment with a private balcony  
Springwell Lane, Rickmansworth, WD3 8UZ

**ROBSONS**

**Asking Price: £1,900 pcm**

## **A recently renovated fully furnished two bedroom apartment with a private balcony**

Springwell Lane, Rickmansworth, WD3 8UZ

---

• ENTRANCE HALL • LOUNGE/DINING ROOM WITH ACCESS TO BALCONY • FITTED KITCHEN • MAIN BEDROOM WITH FITTED WARDROBES AND ENSUITE SHOWER • BEDROOM TWO • BATHROOM • COMMUNAL GROUNDS • ALLOCATED PARKING SPACE • FURNISHED

---

### **Description**

Stylish and fully furnished, this spacious two bedroom, two bathroom apartment offers contemporary living in the sought-after Willow Court development. The property has benefitted from being recently renovated and features a modern open-plan kitchen, lounge and dining area, the space opens onto a private balcony with leafy views.

The master bedroom includes an ensuite, while a sleek family bathroom serves the second generous bedroom. Finished to a high standard throughout with quality furnishings, this apartment is ready to move into and ideal for comfortable, modern living

**\*\* An advance reservation payment of one weeks rent is required to secure the property \*\***

### **Location**

Rickmansworth town centre has a wide range of boutique shops, coffee houses, restaurants and major supermarkets. The Metropolitan and Chiltern line train services connect you to London Baker Street, Marylebone Station and beyond. The M25 motorway is available at both junction 17 and 18 connecting you to the national motorway network. Major London airports are also within reach. The area is well served for good quality private and state schools for all ages. Chorleywood and Rickmansworth offer everything for the sporting individual from cricket, football, tennis, horse riding and golf. Rickmansworth Aquadrome is well catered for walks, sailing, fishing and water skiing sports.





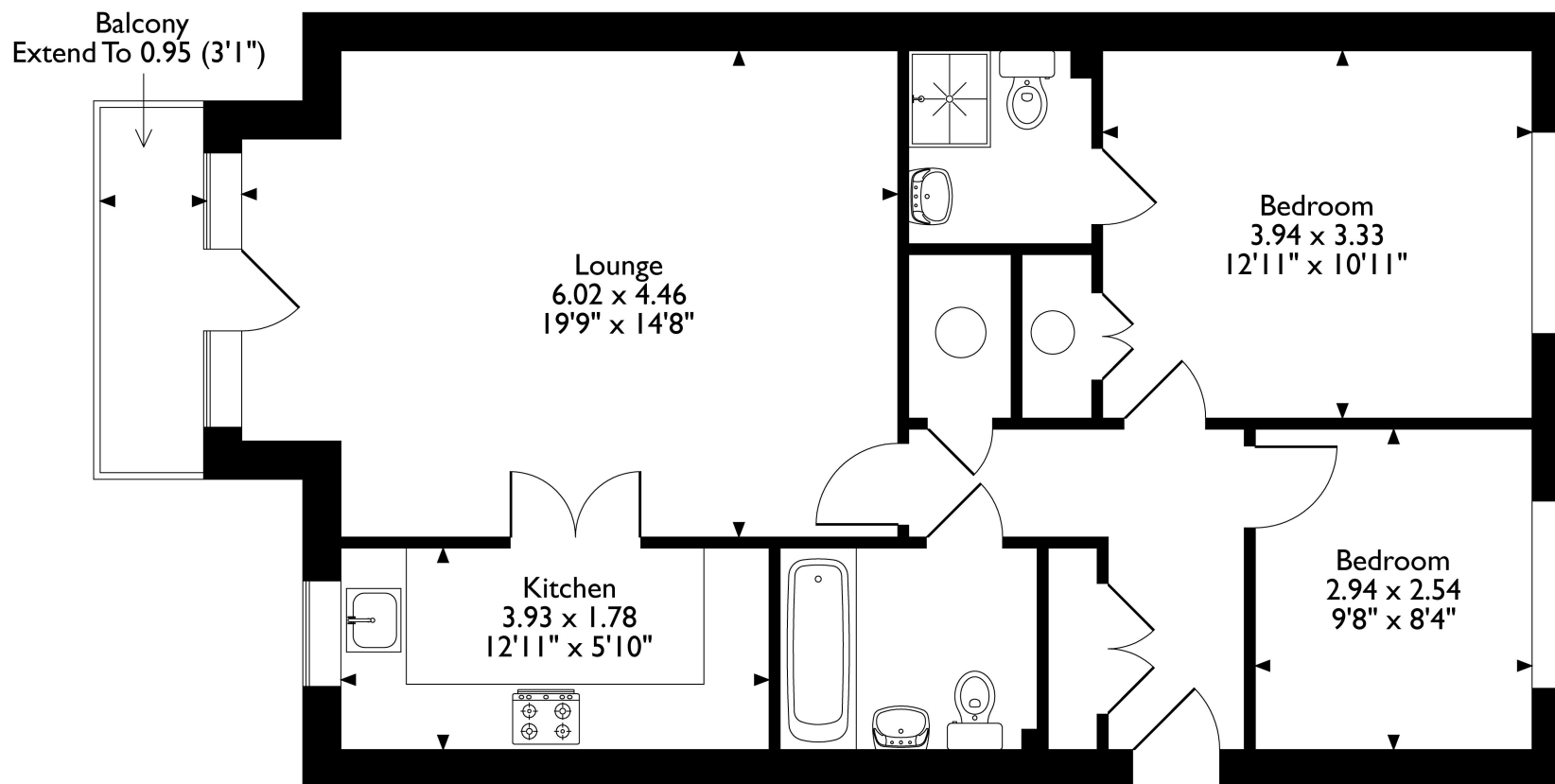
### Additional Information

- Local Authority: Hillingdon
- Council Tax Band: E
- Deposit Amount: £2,192.00
- Reservation Payment: One weeks rent
- Energy Efficiency Rating: Band C
- Available Date: 17/11/2025

Energy Efficiency Rating		
	Current	Potential
Very energy efficient - lower running costs		
92-100 <b>A</b>		
81-91 <b>B</b>		
69-80 <b>C</b>	79	79
55-68 <b>D</b>		
49-54 <b>E</b>		
39-48 <b>F</b>		
1-38 <b>G</b>		
Not energy efficient - higher running costs		
England & Wales		EU Directive 2002/91/EC



Willow Court, Springwell Lane, Rickmansworth, Hertfordshire, WD3 8UZ  
Approximate Gross Internal Area  
73 Sq M/786 Sq Ft



Please note that the location of doors, windows and other items are approximate and this floorplan is to be used for illustrative purposes only. Unauthorized reproduction is prohibited.



REGISTERED OFFICE 2-4 PACKHORSE ROAD, GERRARDS CROSS, BUCKINGHAMSHIRE, ENGLAND, SL9 7QE. COMPANY NO. 07557114. VAT NO. GB211239453