



**A CHAIN FREE TWO DOUBLE BEDROOM BUNGALOW WITH SCOPE TO EXTEND
(STPP)**

Eastfields, Eastcote, Pinner, HA5 2SR

ROBSONS

Eastfields, Eastcote, Pinner, HA5 2SR

CHAIN FREE • DETACHED • TWO DOUBLE BEDROOMS • LARGE KITCHEN / DINER • RECEPTION ROOM • MODERN FAMILY BATHROOM • REAR GARDEN • OFF-STREET PARKING • GARAGE • SCOPE TO EXTEND (STPP)

Description

Perfect for those seeking a property in a convenient yet peaceful location, this charming two double bedroom, detached bungalow is set within a desirable cul-de-sac just a short distance from both Eastcote and Pinner High Streets. The property has been well-maintained throughout, with ample natural light flowing through, and has scope to extend (STPP). Furthermore, the property is offered to the market chain free.

The property comprises an entrance hallway, a generous reception room, a modern and well-equipped kitchen / diner with patio doors opening out to the garden, two double bedrooms, and a modern four-piece family bathroom.





The 50' rear garden provides plenty of outdoor space for you to enjoy, with the benefit of a patio area and a summer house. Off-street parking for two cars is available via your own driveway, along with a garage.

Location

Eastfields is located off Bridle Road, just a short distance from both Eastcote and Pinner High Streets, which both offer a variety of shopping facilities, restaurants, coffee houses and popular supermarkets. For commuters, the Metropolitan and the Piccadilly Lines are available at nearby Eastcote or Pinner Underground Stations, with local bus routes also accessible.

The area is well served by primary and secondary schooling, with Cannon Lane Primary and Pinner High School nearby, as well as there being a number of local parks and open spaces within the area.

Additional Information

Tenure: Freehold

Local Authority: London Borough of Hillingdon

Council Tax Band: F

Energy Efficiency Rating: D

For additional information, please refer to www.robsonsworld.com or call us on: 020 8866 8083.



Approximate Gross Internal Area
88.9 sq m / 957 sq ft
Outbuildings = 17.5 sq m / 188 sq ft
Total = 106.4 sq m / 1,145 sq ft

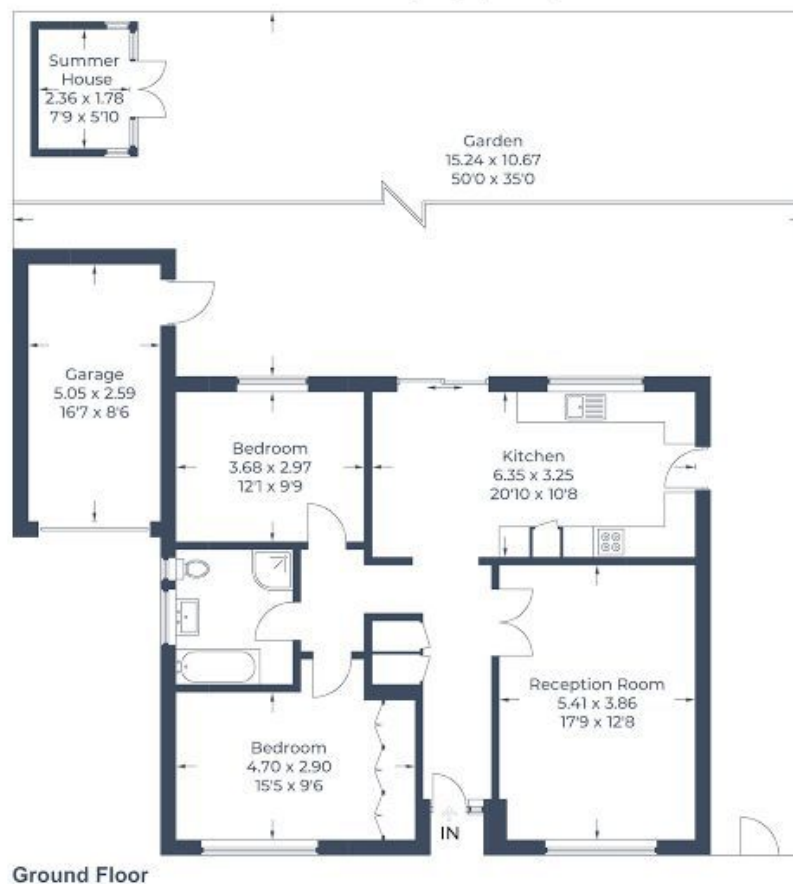


Illustration for identification purposes only,
measurements are approximate, not to scale.

© CJ Property Marketing

ROBSONS

1 High Street, Pinner HA5 5PJ
Tel: 020 8866 8083 Email: pinner@robsonswb.com

www.robsonswb.com

SCAN TO VISIT



OUR WEBSITE

Important notice: Robsons, their clients and any joint agents give notice that 1: They are not authorised to make or give any representations or warranties in relation to the property either here or elsewhere, either on their own behalf or on behalf of their client or otherwise. They assume no responsibility for any statement that may be made in these particulars. These particulars do not form part of any offer or contract and must not be relied upon as statements or representations of fact. 2: Any areas, measurements or distances are approximate. Plot sizes and dimensions are taken from Promap and are approximate. The text, photographs and plans are for guidance only and are not necessarily comprehensive. It should not be assumed that the property has all necessary planning, building regulation or other consents and Robsons have not tested any services, equipment or facilities. Purchasers must satisfy themselves by inspection or otherwise.