



A DETACHED FIVE BEDROOM FAMILY HOME IN THE GROVE FARM PARK ESTATE

Grove Farm Park, Northwood, Middlesex, HA6 2BQ

ROBSONS

Grove Farm Park, Northwood, Middlesex, HA6 2BQ

**DETACHED • FIVE BEDROOMS • SPACIOUS
LIVING/DINING ROOM • PRIVATE REAR
GARDEN • DOUBLE GARAGE • OFF-STREET
PARKING • QUIET CUL-DE-SAC • GROVE
FARM PARK ESTATE**

Description

Situated within the highly sought-after Grove Farm Park Estate, this spacious five-bedroom detached home offers the perfect blend of comfort, practicality, and location. Nestled in a peaceful cul-de-sac, this property is ideal for families seeking a serene lifestyle with excellent local amenities close by.

The ground floor boasts a generous open-plan living and dining area, a study, well-appointed kitchen, utility room and convenient downstairs w/c.

Upstairs, the property features five well-proportioned bedrooms. The main bedroom benefits from fitted wardrobes and an ensuite bathroom, while the family bathroom serves the remaining bedrooms.

Outside, a private rear garden with a patio area offers an excellent space for outdoor dining and relaxation.





To the front, there is off-street parking and a double garage providing ample storage and convenience.

Location

Northwood provides a range of shopping facilities including Waitrose supermarket, a variety of restaurants and other amenities with the Metropolitan Line station providing access to Baker Street and the City. There is a plethora of state and private schooling together with a wide choice of recreational facilities, which include golf courses and fitness centres. The M1, M40 and M25 motorways are also accessible.

NB this property is situated within the proximity of the ULEZ, if your vehicle does not comply charges may apply.

Additional Information

Tenure: Freehold

Local Authority: Three Rivers

Council Tax Band: G

Energy Efficiency Rating: C

For additional information, please refer to www.robsonswb.com or call us on: 01923 835355.



Approximate Gross Internal Area
 Ground Floor = 71.9 sq m / 774 sq ft
 First Floor = 73.4 sq m / 790 sq ft
 Garage / Outbuildings = 31.5 sq m / 339 sq ft
 Total = 176.8 sq m / 1,903 sq ft

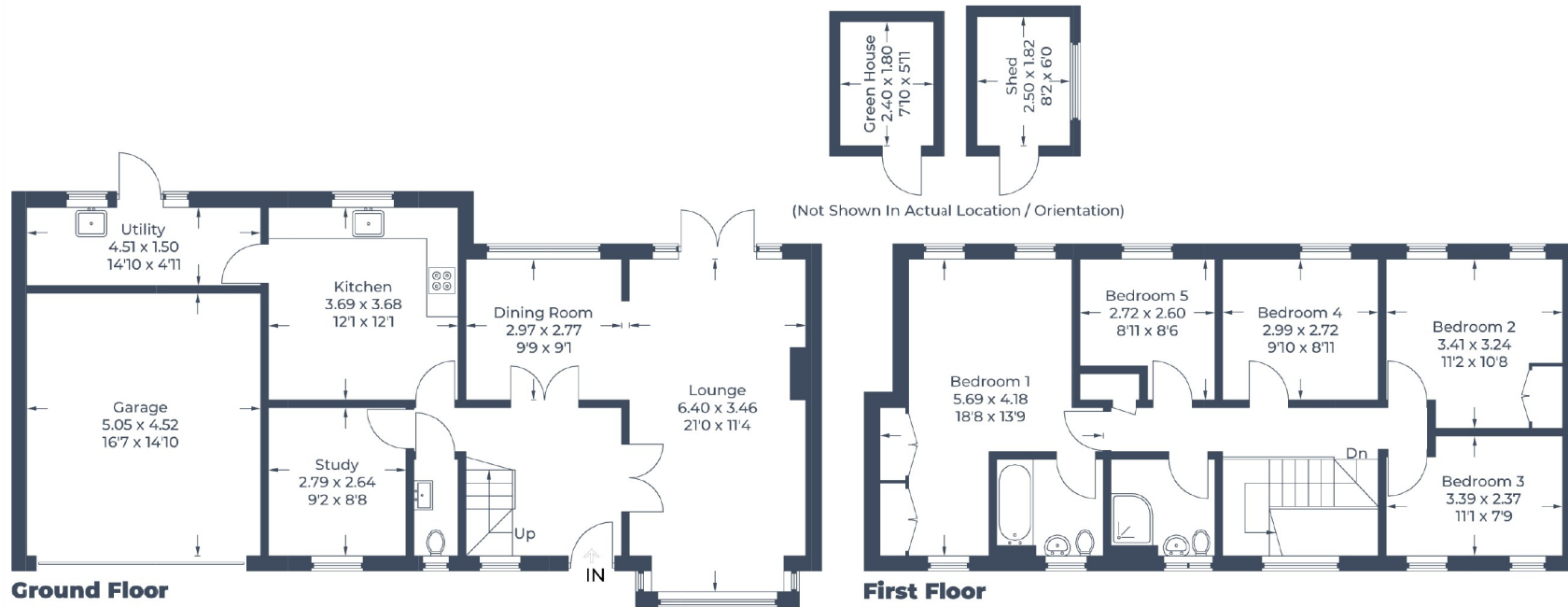


Illustration for identification purposes only,
 measurements are approximate, not to scale.

© CJ Property Marketing

ROBSONS

7 Clive Parade, Northwood, HA6 2QF
 Tel: 01923 835355 Email: northwood@robsonswb.com
www.robsonswb.com

SCAN TO VISIT



OUR WEBSITE

Important notice: Robsons, their clients and any joint agents give notice that 1: They are not authorised to make or give any representations or warranties in relation to the property either here or elsewhere, either on their own behalf or on behalf of their client or otherwise. They assume no responsibility for any statement that may be made in these particulars. These particulars do not form part of any offer or contract and must not be relied upon as statements or representations of fact. 2: Any areas, measurements or distances are approximate. Plot sizes and dimensions are taken from Promap and are approximate. The text, photographs and plans are for guidance only and are not necessarily comprehensive. It should not be assumed that the property has all necessary planning, building regulation or other consents and Robsons have not tested any services, equipment or facilities. Purchasers must satisfy themselves by inspection or otherwise.