



A CHAIN FREE TWO BEDROOM SEMI-DETACHED BUNGALOW IN A CONVENIENT LOCATION

Sherborne Way, Croxley Green, Hertfordshire, WD3 3PG

ROBSONS

Sherborne Way, Croxley Green, Hertfordshire, WD3
3PG

**SEMI-DETACHED • TWO BEDROOMS • ONE
BATHROOM • SPACIOUS LIVING ROOM •
CONSERVATORY • KITCHEN • PRIVATE REAR
GARDEN • OFF-STREET PARKING**

Description

Situated in a highly sought-after residential area, this chain free two-bedroom semi-detached bungalow offers comfortable living with excellent access to local amenities and transport links. Just a short walk from Croxley Green Metropolitan Station, well-regarded schools, and a variety of local shops and services, this property presents a fantastic opportunity for downsizers, small families, or commuters alike.

The accommodation comprises a welcoming entrance hallway, two well-proportioned double bedrooms, a family bathroom, a kitchen and a spacious living room that flows seamlessly into a bright conservatory. Double doors from the conservatory open out onto a private rear garden, complete with a patio area—perfect for relaxing or entertaining. To the front of the property, there is the added benefit of off-street parking.





Picturesque Croxley Green provides the perfect backdrop as it offers village charm in the rural suburbs of Hertfordshire. The property is within easy reach of Croxley Green and Rickmansworth town centres with its wide range of boutique shops, coffee houses, restaurants and the major supermarkets. The Metropolitan and Chiltern line train services connects you to London Baker Street, Marylebone Station and beyond. The M25 motorway is available at both junctions 17 and 18 connecting you to the national motorway network. Major London airports are also within reach. The area is well served for good quality private and state schools for all ages.

Additional Information

Tenure: Freehold

Local Authority: Three Rivers

Council Tax Band: D

Energy Efficiency Rating: D

For additional information, please refer to www.robsonswb.com or call us on: 01923 777762.



Approximate Gross Internal Area = 70.6 sq m / 760 sq ft

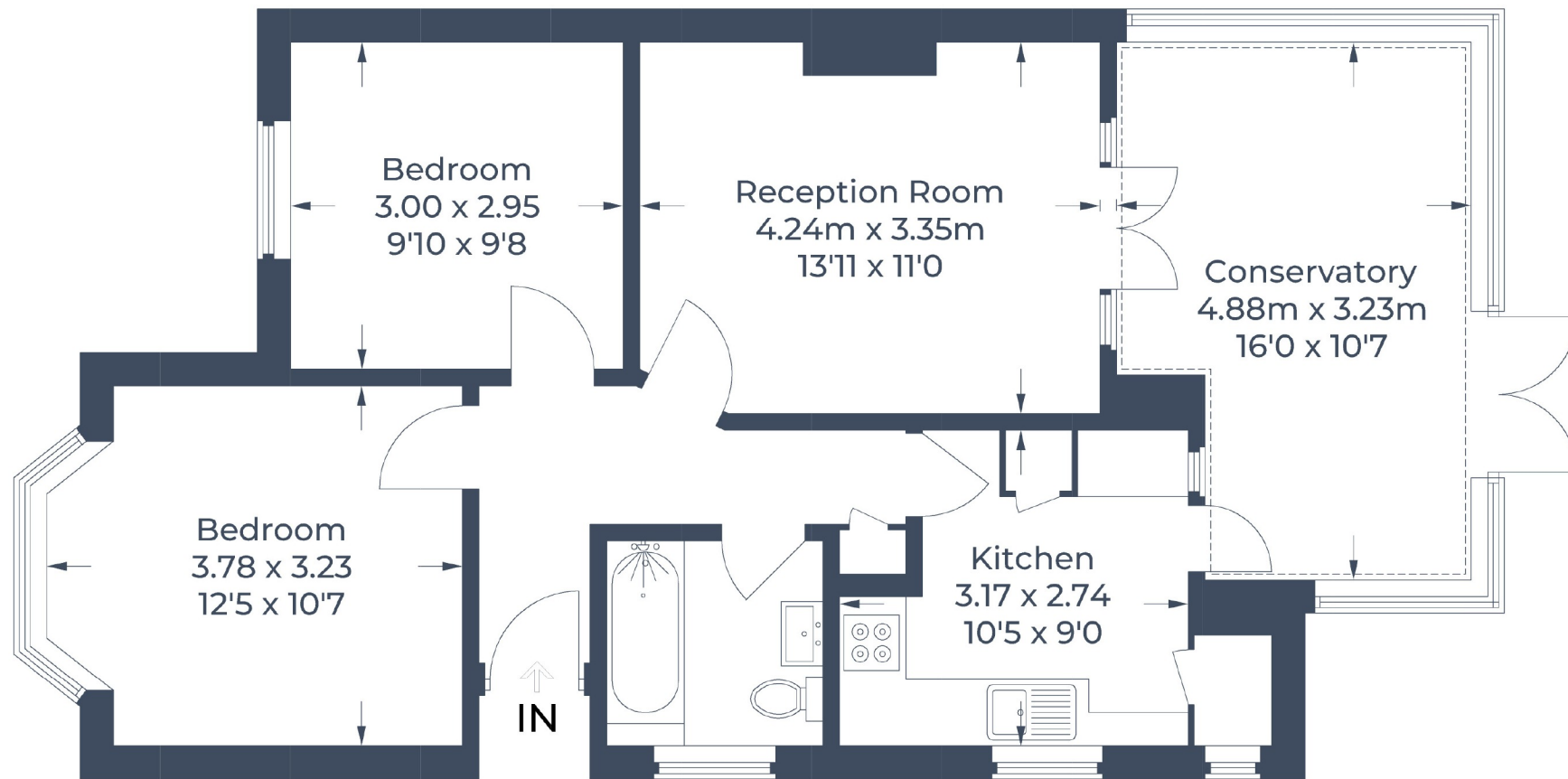


Illustration for identification purposes only,
measurements are approximate, not to scale.
© CJ Property Marketing Produced for Robsons

ROBSONS

130 High Street, Rickmansworth WD3 1AB
Tel: 01923 777762 Email: rickmansworth@robsonswb.com
www.robsonswb.com

SCAN TO VISIT



OUR WEBSITE

Important notice: Robsons, their clients and any joint agents give notice that 1: They are not authorised to make or give any representations or warranties in relation to the property either here or elsewhere, either on their own behalf or on behalf of their client or otherwise. They assume no responsibility for any statement that may be made in these particulars. These particulars do not form part of any offer or contract and must not be relied upon as statements or representations of fact. 2: Any areas, measurements or distances are approximate. Plot sizes and dimensions are taken from Promap and are approximate. The text, photographs and plans are for guidance only and are not necessarily comprehensive. It should not be assumed that the property has all necessary planning, building regulation or other consents and Robsons have not tested any services, equipment or facilities. Purchasers must satisfy themselves by inspection or otherwise.