



A one bedroom ground floor maisonette close to local amenities
Claire Court,, HA5 4LB

ROBSONS

Asking Price: £1,400 pcm

A one bedroom ground floor maisonette close to local amenities

Claire Court,, HA5 4LB

• ENTRANCE HALL • LIVING/DINER • KITCHEN • BATHROOM • BEDROOM • COMMUNAL GROUNDS • UNFURNISHED

Description

This well presented ground floor maisonette with one double bedroom is situated within the heart of Hatch End Broadway. The property is located on a tree lined street, with own private entrance, spacious L-shaped lounge, fitted kitchen with ample storage, double bedroom and bathroom suite. Attractive communal gardens surround and street parking.

**** An advance reservation payment of one weeks rent is required to secure the property ****

Location

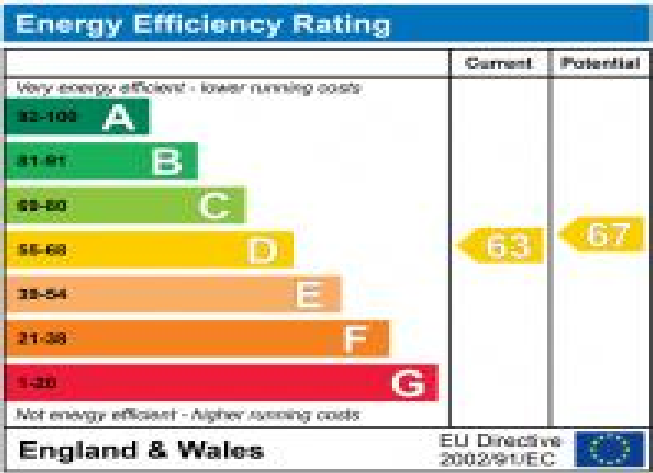
Northwood provides a range of shopping facilities including a Waitrose supermarket, a variety of restaurants and other amenities with the Metropolitan Line station providing access to Baker Street and the City. There is a plethora of state and private schooling together with a wide choice of recreational facilities, which include golf courses and fitness centres. The M1, M40 and M25 motorways are also accessible.



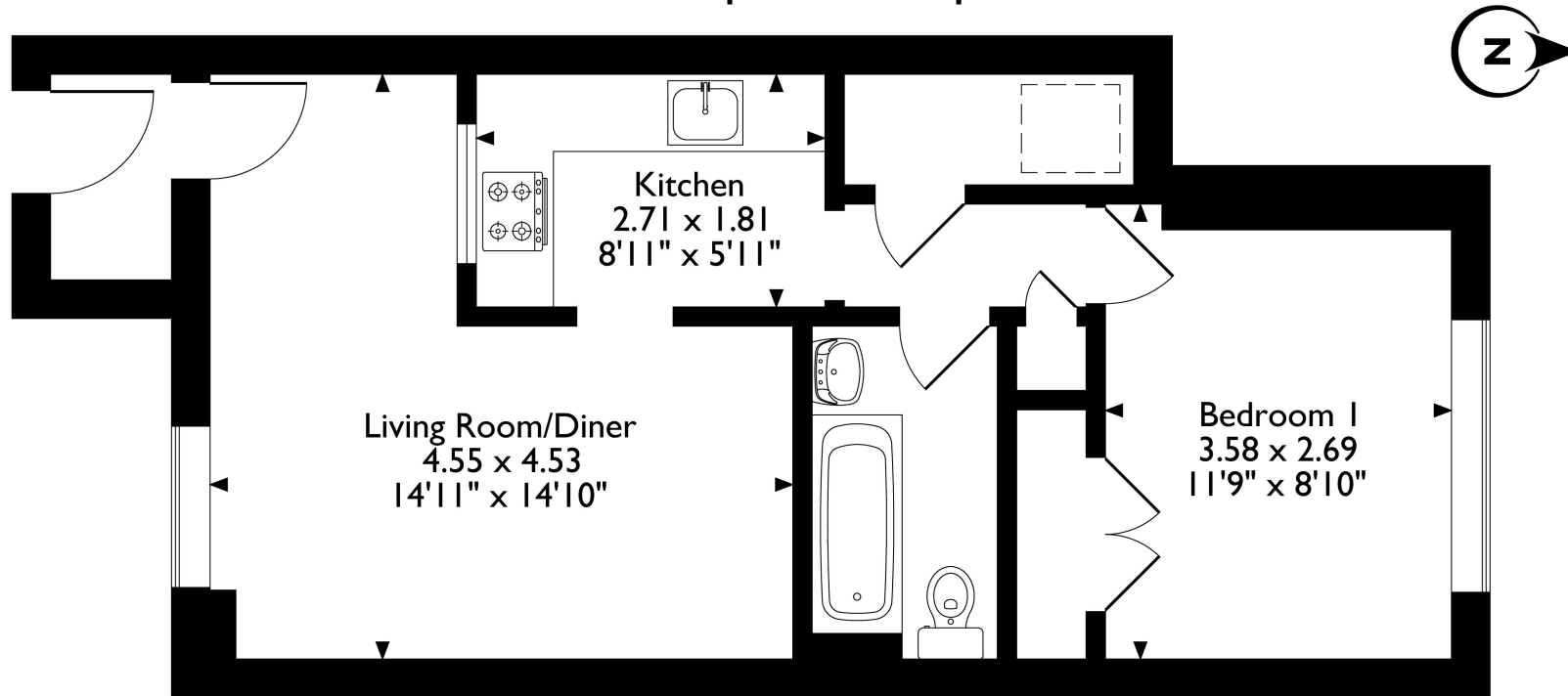


Additional Information

- Local Authority: Harrow
- Council Tax Band: C
- Deposit Amount: £1,615.00
- Reservation Payment: one weeks rent
- Energy Efficiency Rating: Band D
- Available Date: 07/08/2025



Claire Court, Westfield Park, Pinner, HA5 4LB
Approximate Gross Internal Area
43 Sq M/463 Sq Ft



Please note that the location of doors, windows and other items are approximate and this floorplan is to be used for illustrative purposes only. Unauthorized reproduction is prohibited.

