



A four bedroom house in a central location  
Drysedale Close, Northwood, Middlesex HA6 2YT

**ROBSONS**



**Asking Price: £4,000 pcm**

## A four bedroom house in a central location

Drysdale Close, Northwood, Middlesex HA6 2YT

---

• ENTRANCE HALL • LOUNGE • DINING ROOM • KITCHEN • MAIN BEDROOM WITH FITTED WARDROBES AND ENSUITE • THREE FURTHER BEDROOMS • BATHROOM • REAR GARDEN • DRIVEWAY • DOUBLE GARAGE • UNFURNISHED

---

### Description

A spacious and well-presented four-bedroom detached house with a double garage, ideally located in the heart of Northwood. Offering flexible living, with a welcoming hallway, a bright family room, and a generous main living room with sliding doors to a private garden. The open-plan kitchen/diner provides a practical space for everyday living and entertaining, with the added benefit of a downstairs WC. Upstairs features four well-proportioned bedrooms, including a principal bedroom with en suite, and a modern family bathroom. The double garage offers excellent storage or potential use as a home gym or workspace. Positioned close to local amenities, schools, and transport links, this home combines comfort, space, and convenience for modern family life.

\*\* An advance reservation payment of one weeks rent is required to secure

### Location

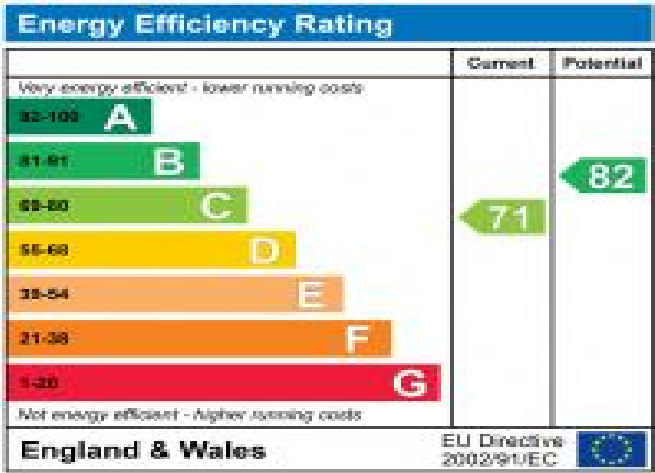
Northwood provides a range of shopping facilities including a Waitrose supermarket, a variety of restaurants and other amenities with the Metropolitan Line station providing access to Baker Street and the City. There is a plethora of state and private schooling together with a wide choice of recreational facilities, which include golf courses and fitness centres. The M1, M40 and M25 motorways are also accessible.





**Additional Information**

- Local Authority: Hillingdon
- Council Tax Band: G
- Deposit Amount: £4,615.00
- Reservation Payment: One weeks rent
- Energy Efficiency Rating: Band C
- Available Date: 21/07/2025





Approximate Gross Internal Area  
 Ground Floor = 95.3 sq m / 1,026.2 sq ft  
 First Floor = 72.9 sq m / 784.7 sq ft  
 Total = 168.2 sq m / 1,810.9 sq ft

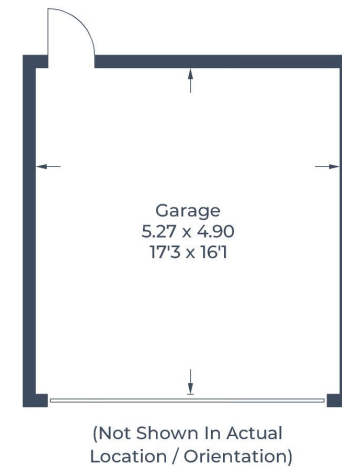
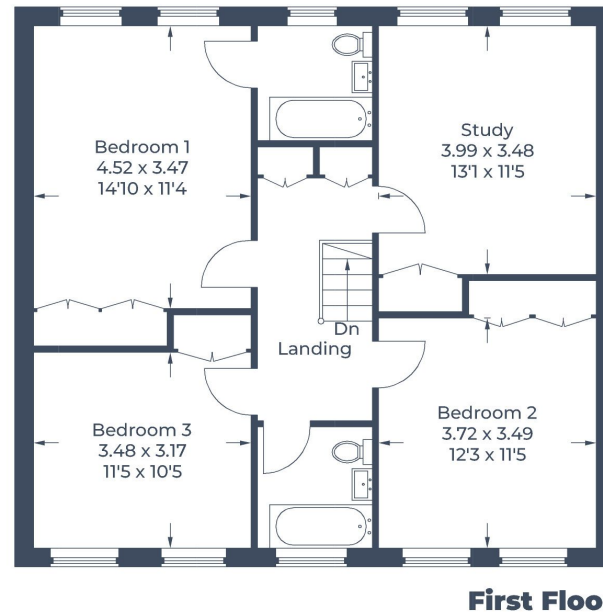
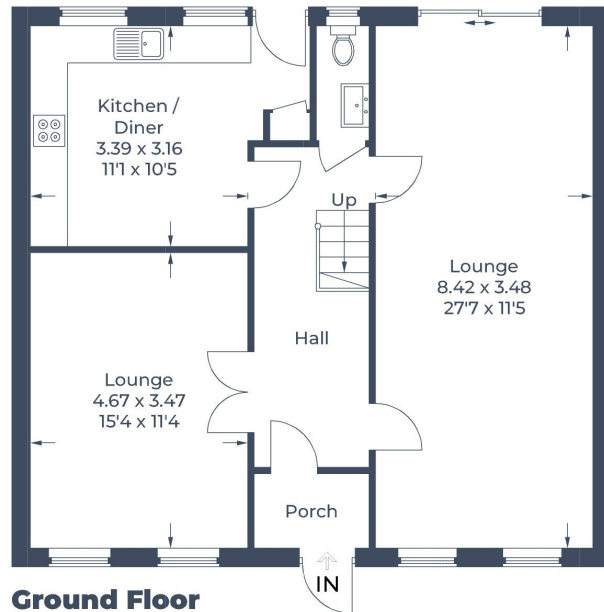


Illustration for identification purposes only,  
 measurements are approximate, not to scale.  
 © CJ Property Marketing

