



A spacious five bedroom, three bathroom family home in a cul de sac location
Cullera Close, Northwood, HA6 3SE

ROBSONS

Asking Price: £4,500 pcm

A spacious five bedroom, three bathroom family home in a cul de sac location

Cullera Close, Northwood, HA6 3SE

• ENTRANCE HALL • RECEPTION/DINING ROOM • RECEPTION ROOM TWO • KITCHEN AND UTILITY AREA • GROUND FLOOR BEDROOM WITH ENSUITE • MAIN BEDROOM WITH ENSUITE AND FITTED WARDROBES • THREE FURTHER BEDROOMS WITH FITTED WARDROBES • FAMILY SHOWER ROOM • PRIVATE ACCESS STUDIO / RECEPTION ROOM • DRIVEWAY • UNFURNISHED

Description

Situated in a secluded and quiet cul-de-sac close to the centre of Northwood, this spacious five-bedroom, three-bathroom family home offers well-designed accommodation across two floors. The property has been thoughtfully extended to provide flexible living space, including a generous ground floor living room and a separate bedroom with an en-suite shower room—ideal for guests or those needing ground floor accommodation. Finished to a sleek and modern standard throughout, the home also boasts a private south-facing garden that wraps around the house, creating a bright and peaceful outdoor space. In addition, the property features a fully equipped and spacious studio/extra reception room with heating and power, benefiting from private external access—perfect for use as a home office, creative workspace, or guest suite.** An advance reservation payment of one weeks rent is required to secure the property **

Location

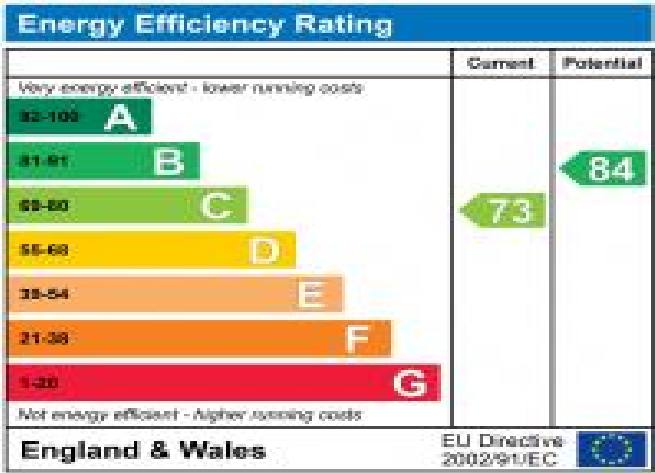
Northwood provides a range of shopping facilities including a Waitrose supermarket, a variety of restaurants and other amenities with the Metropolitan Line station providing access to Baker Street and the City. There is a plethora of state and private schooling together with a wide choice of recreational facilities, which include golf courses and fitness centres. The M1, M40 and M25 motorways are also accessible.



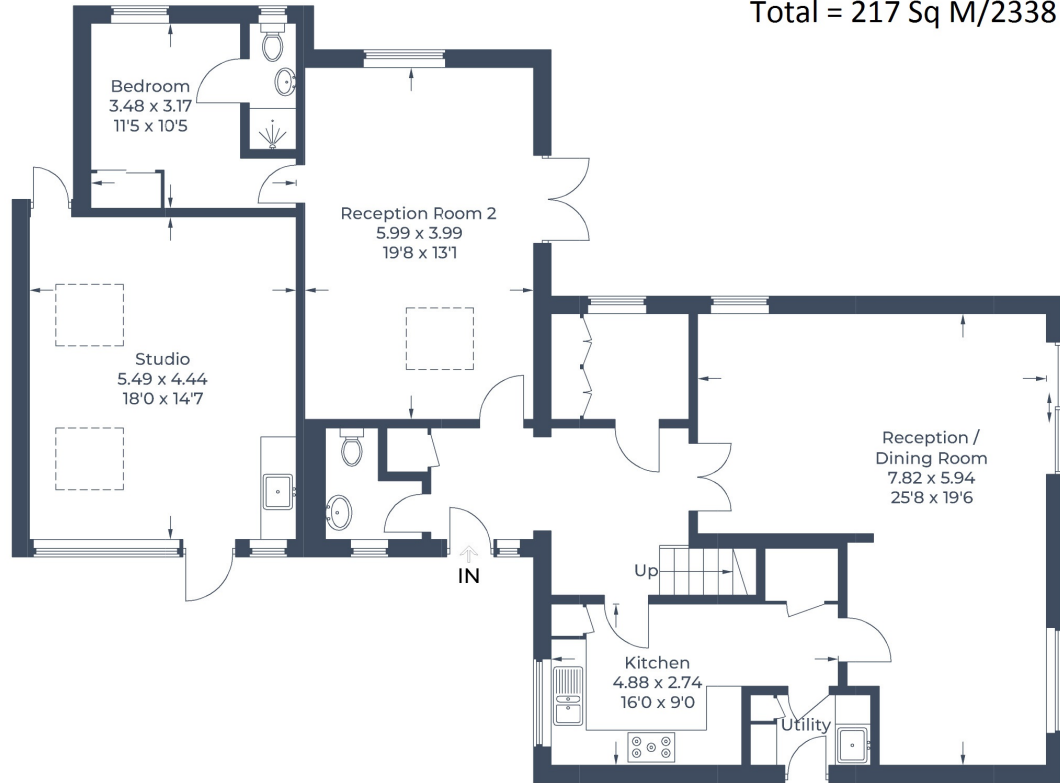


Additional Information

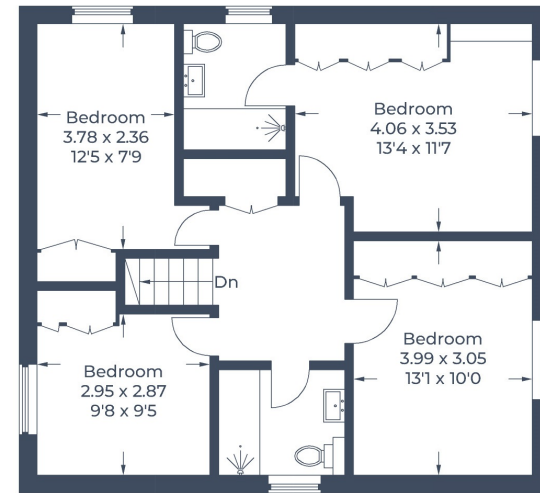
- Local Authority: Hillingdon
- Council Tax Band: G
- Deposit Amount: £6,230.00
- Reservation Payment: One weeks rent
- Energy Efficiency Rating: Band C
- Available Date: 28/08/2025



Cullera Close, Northwood
 Approximate Gross Internal Area
 Main House = 189 Sq M/2037 Sq Ft
 Studio = 28 Sq M/301 Sq Ft
 Total = 217 Sq M/2338 Sq Ft



Ground Floor



First Floor

Illustration for identification purposes only,
 measurements are approximate, not to scale.
 © CJ Property Marketing Produced for Robsons



REGISTERED OFFICE 2-4 PACKHORSE ROAD, GERRARDS CROSS, BUCKINGHAMSHIRE, ENGLAND, SL9 7QE. COMPANY NO. 07557114. VAT NO. GB211239453