



A WELL PRESENTED GROUND FLOOR ONE BEDROOM APARTMENT

Pinner Road, Northwood, Middlesex, HA6 1BS

ROBSONS

Pinner Road, Northwood, Middlesex, HA6 1BS

**GROUND FLOOR • ONE BEDROOM •
OPEN-PLAN KITCHEN/LIVING ROOM •
ENSUITE BATHROOM • IMMACULATE
CONDITION • NO ONWARD CHAIN • PLENTY
OF LIGHT THROUGHOUT • CLOSE TO
STATION & SHOPS**

Description

Situated just moments from the amenities of Northwood Hills and within easy reach of both Northwood and Northwood Hills Metropolitan Line stations, this beautifully presented ground-floor apartment offers convenience, comfort, and modern living.

Recently refurbished to a high standard, the property features a welcoming entrance hallway leading into a bright and airy open-plan kitchen/living area with a modern fitted kitchen. The generously sized double bedroom boasts a sleek and stylish en-suite bathroom. Finished throughout to a clean and modern standard, this apartment is perfect for first-time buyers, downsizers, or investors alike.

Offered with no onward chain, viewing is highly recommended.





Northwood provides a range of shopping facilities including Waitrose supermarket, a variety of restaurants and other amenities with the Metropolitan Line station providing access to Baker Street and the City. There is a plethora of state and private schooling together with a wide choice of recreational facilities, which include golf courses and fitness centres. The M1, M40 and M25 motorways are also accessible.

NB this property is situated within the proximity of the ULEZ, if your vehicle does not comply charges may apply.

Additional Information

Tenure: Leasehold

Lease Length: 116 years remaining

Service Charge: £1,200 p/a

Ground Rent: £250 p/a

Local Authority: London Borough of Hillingdon

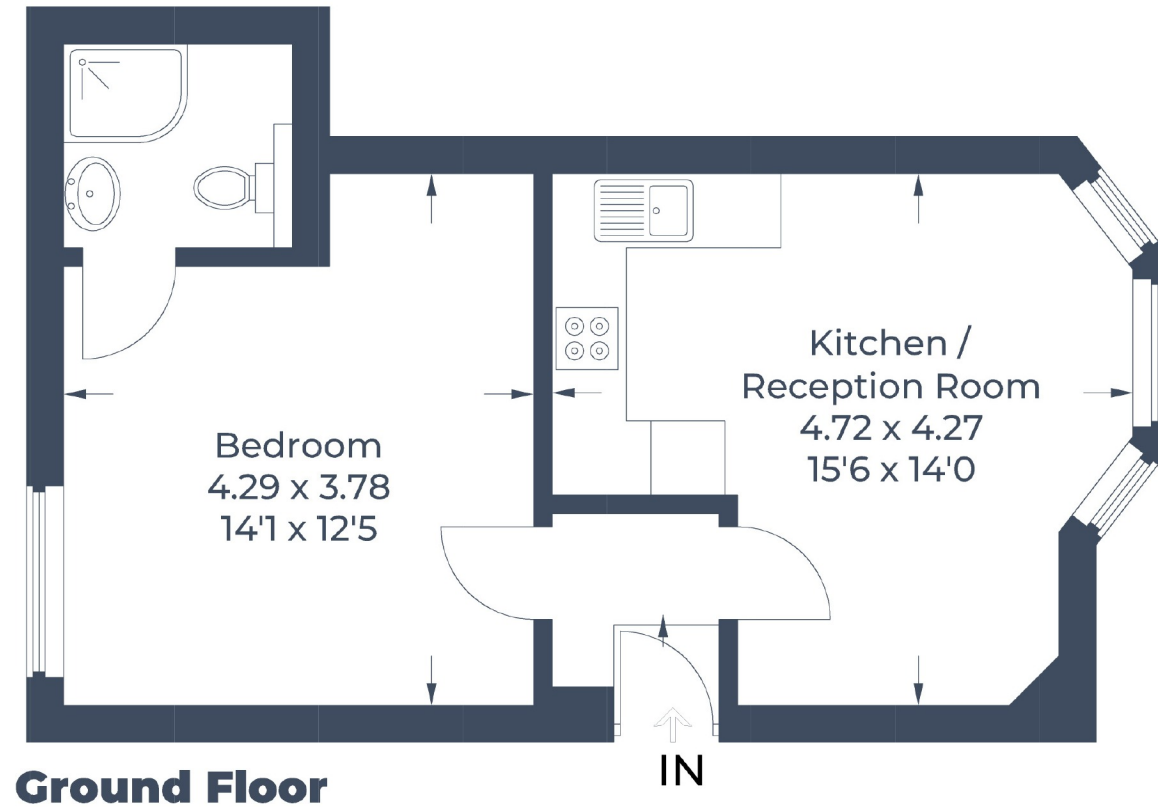
Council Tax Band: B

Energy Efficiency Rating: C

For additional information, please refer to www.robsonswb.com or call us on: 01923 835355.



Approximate Gross Internal Area = 38.0 sq m / 409 sq ft



Ground Floor

Illustration for identification purposes only,
measurements are approximate, not to scale.
© CJ Property Marketing Produced for Robsons

ROBSONS

7 Clive Parade, Northwood, HA6 2QF
Tel: 01923 835355 Email: northwood@robsonswb.com
www.robsonswb.com

SCAN TO VISIT



OUR WEBSITE

Important notice: Robsons, their clients and any joint agents give notice that 1: They are not authorised to make or give any representations or warranties in relation to the property either here or elsewhere, either on their own behalf or on behalf of their client or otherwise. They assume no responsibility for any statement that may be made in these particulars. These particulars do not form part of any offer or contract and must not be relied upon as statements or representations of fact. 2: Any areas, measurements or distances are approximate. Plot sizes and dimensions are taken from Promap and are approximate. The text, photographs and plans are for guidance only and are not necessarily comprehensive. It should not be assumed that the property has all necessary planning, building regulation or other consents and Robsons have not tested any services, equipment or facilities. Purchasers must satisfy themselves by inspection or otherwise.