



IMPRESSIVE SIX BEDROOM FAMILY HOME ON THE EASTBURY FARM ESTATE

Westbury Road, Northwood, Middlesex, HA6 3DB

ROBSONS

Westbury Road, Northwood, Middlesex, HA6 3DB

Description

An imposing six bedroom, three bathroom detached family home, with a sweeping carriage driveway and golf course to the rear.

Occupying one of the largest plots within the Eastbury Farm estate, this superb residence has been thoughtfully extended and refurbished to a very high standard, creating a stylish family home with versatile living space and all the modern comforts.

The front door enters to a spacious entrance hall with porcelain-tiled flooring and under floor heating which continues through the entire ground floor. Double doors flow through to an open plan kitchen/dining/family room with bay windows and bi-fold doors overlooking the impressive rear garden and golf course beyond. The modern kitchen is fitted with contrasting cabinets providing ample storage, integrated Siemens appliances and a central island for cooking and dining. A separate utility room also serves as a second kitchen.

A generous dual aspect living room leads through a second reception room, which currently serves as a gym, both with doors accessing the rear garden. Completing the ground floor is a formal dining room to the front aspect and a guest cloakroom.





To the first floor is a spacious principal bedroom with a dressing room and ensuite bathroom. A second double bedroom also benefits from an ensuite shower room, plus there are four further bedrooms, all with fitted wardrobes, plus a separate family shower room.

The imposing frontage spans approximately 80 feet, with a sweeping carriage driveway providing ample off street parking and access to the integral garage. Backing on to Sandy Lodge golf course, the attractive rear garden is mainly laid to lawn, with mature shrubs and trees along the boundary, and a large paved terrace, ideal for outside entertaining.

Location

The property is equidistant from both Northwood and Moor Park, with their boutique shops, eateries and supermarkets. The Metropolitan Line train stations serve both town centres, which provide access to Baker Street, The City and beyond. The area is also well served for good quality schools for all ages, and has the well regarded Eastbury Farm School on the estate. Recreational facilities cater for those enjoying a sporting life, with four major golf courses, cricket and football clubs and two fitness centres.

Additional Information

Tenure: Freehold

Local Authority: Three Rivers District Council

Council Tax Band: H

Energy Efficiency Rating: C



Approximate Gross Internal Area
 Ground Floor = 144.4 sq m / 1,554 sq ft
 First Floor = 145.3 sq m / 1,564 sq ft
 Garage = 21.1 sq m / 227 sq ft
 Total = 310.8 sq m / 3,345 sq ft

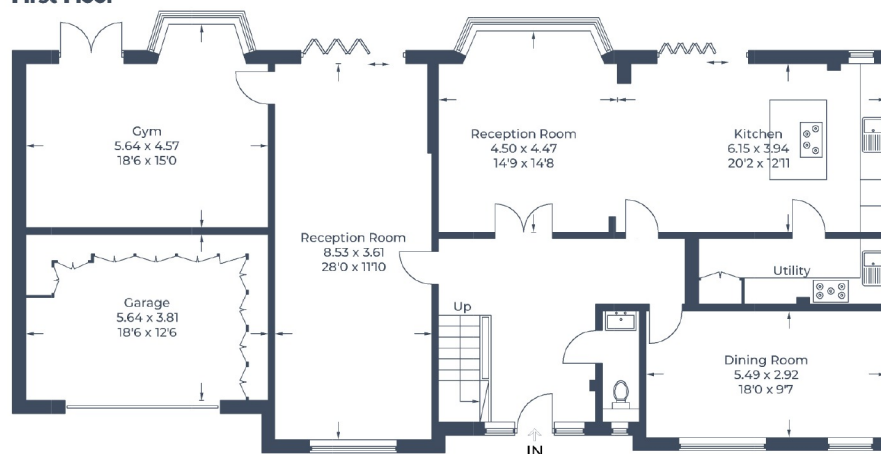
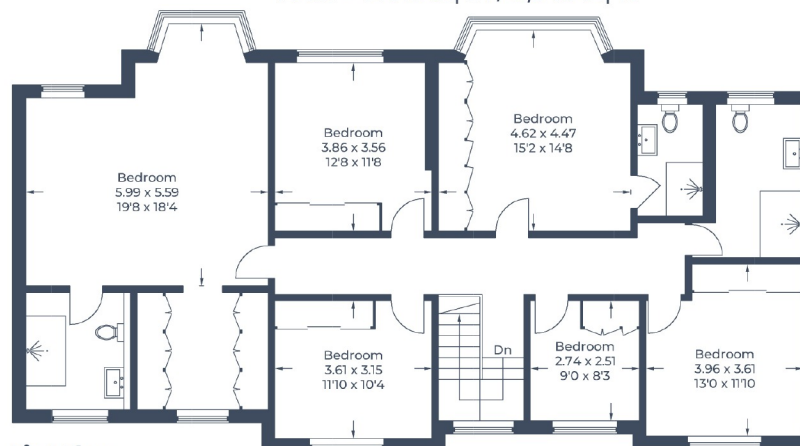


Illustration for identification purposes only,
 measurements are approximate, not to scale.
 © CJ Property Marketing Produced for Robsons

ROBSONS

North Approach, Moor Park, Northwood HA6 2JQ
 Tel: 01923 820622 Email: moorpark@robsonsweb.com
www.robsonsweb.com

Important notice: Robsons, their clients and any joint agents give notice that 1: They are not authorised to make or give any representations or warranties in relation to the property either here or elsewhere, either on their own behalf or on behalf of their client or otherwise. They assume no responsibility for any statement that may be made in these particulars. These particulars do not form part of any offer or contract and must not be relied upon as statements or representations of fact. 2: Any areas, measurements or distances are approximate. Plot sizes and dimensions are taken from Promap and are approximate. The text, photographs and plans are for guidance only and are not necessarily comprehensive. It should not be assumed that the property has all necessary planning, building regulation or other consents and Robsons have not tested any services, equipment or facilities. Purchasers must satisfy themselves by inspection or otherwise.