



A SPACIOUS THREE BEDROOM SEMI-DETACHED FAMILY HOME

Durrants Drive, Croxley Green, Hertfordshire WD3 3NY

ROBSONS

A SPACIOUS THREE BEDROOM SEMI-DETACHED FAMILY HOME

Durrants Drive, Croxley Green, Herts WD3 3NY

- KITCHEN/BREAKFAST ROOM
- LIVING ROOM
- CONSERVATORY
- BOOT ROOM
- THREE BEDROOMS
- FOUR PIECE FAMILY BATHROOM
- ATTRACTIVE REAR GARDEN
- GYM
- GARDEN OFFICE

DESCRIPTION

An immaculately presented three bedroom semi-detached family home. This property offers bright and spacious accommodation comprising of an entrance hall leading to the modern kitchen/breakfast room with ample storage and work surfaces. There is a generously sized living room which is open plan with the conservatory. The ground floor is complemented by a boot room.

To the first floor there are three light-filled bedrooms and a tiled family bathroom with a bath, shower cubicle and storage.





The property is approached via a pretty front garden with off street parking. To the rear there is an attractive rear garden mainly laid to lawn with a patio area ideal for entertaining. There are walled borders and pathways leading to the 22' gym, the garden office and the shed.

Location

Rickmansworth town centre has a wide range of boutique shops, coffee houses, restaurants and major supermarkets. The Metropolitan and Chiltern line train services connect you to London Baker Street, Marylebone Station and beyond. The M25 motorway is available at both junction 17 and 18, connecting you to the national motorway network. Major London airports are also within reach.

The area is well served for good quality private and state schools for all ages.

Chorleywood and Rickmansworth offer everything for the sporting individual from rugby, cricket, football, tennis, horse riding and golf. Rickmansworth Aquadrome is an ideal setting for walks, sailing, fishing and water skiing.

Additional Information

Guide Price: Price on Application

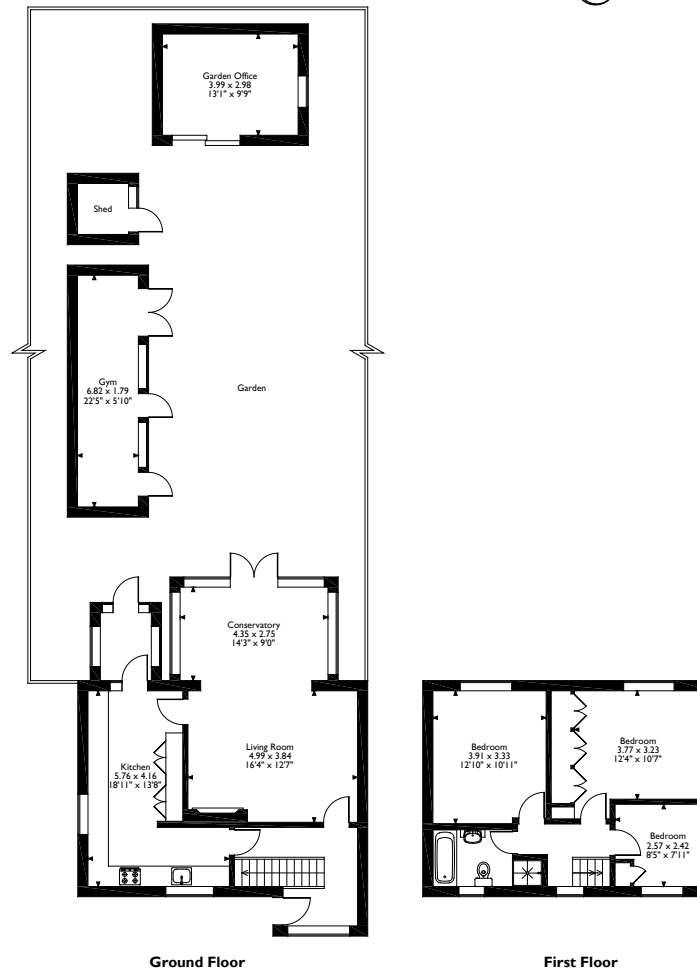
Tenure: Freehold

Local Authority: Three Rivers District Council

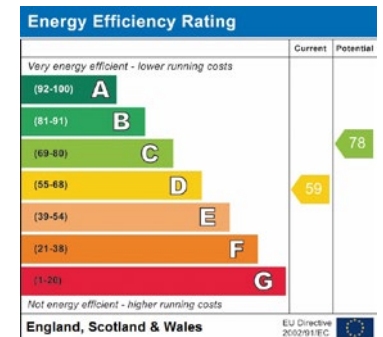
Energy Efficiency Rating: Band D



Durrants Drive, Croxley Green, Rickmansworth
 Approximate Gross Internal Area
 Main House = 107 Sq M/1154 Sq Ft
 Outbuildings = 24 Sq M/259 Sq Ft
 Total = 131 Sq M/1413 Sq Ft



Please note that the location of doors, windows and other items are approximate and this floorplan is to be used for illustrative purposes only. Unauthorized reproduction is prohibited.



Address: 130 High Street, Rickmansworth, Hertfordshire, WD3 1AB
 Tel: 01923 777762 email: rickmansworth@robsonsweb.com
www.robsonsweb.com

