



A four bedroom family home in a convenient location
Church Drive, Harrow, HA2 7NR



Asking Price: £2,750 pcm

A four bedroom family home in a convenient location

Church Drive, Harrow, HA2 7NR

• ENTRANCE HALL • TWO RECEPTION ROOMS • MODERN FITTED KITCHEN • GROUND FLOOR BEDROOM WITH ENSUITE • THREE BEDROOMS - TWO WITH FITTED WARDROBES • FAMILY BATHROOM • EXTENSIVE REAR GARDEN • DRIVEWAY • UNFURNISHED

Description

A spacious four bedroom semi-detached home situated in a sought-after and convenient location close to local amenities. The ground floor comprises an entrance porch and hallway, a front aspect lounge, a separate dining room with access to the garden and a modern kitchen offering a range of fitted units with integrated appliances. Completing the ground floor is a guest bedroom with an en-suite shower room. To the first floor there are two double bedrooms with one benefiting from fitted wardrobes, a further bedroom and a family bathroom with a separate WC. Externally the property offers a well-maintained garden. To the front there is a driveway way providing off-street parking for two cars.

**** An advance reservation payment of one weeks rent is required to secure the property ****

Location

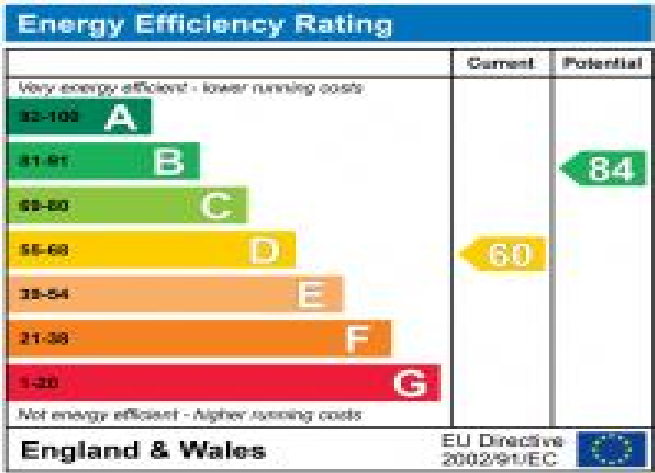
Located within easy reach of Rayners Lane, North Harrow and Pinner high streets all of which offer a variety of shopping facilities, restaurants, coffee houses and popular supermarkets. For commuters, there are excellent transport links close by with the Metropolitan line available at both North Harrow and Pinner stations, with Rayners lane station offering both the Piccadilly and Metropolitan line, all providing a frequent service into London. The area is well served by primary and secondary schooling with Longfield Primary just a few minutes away, children's play grounds and recreational facilities.



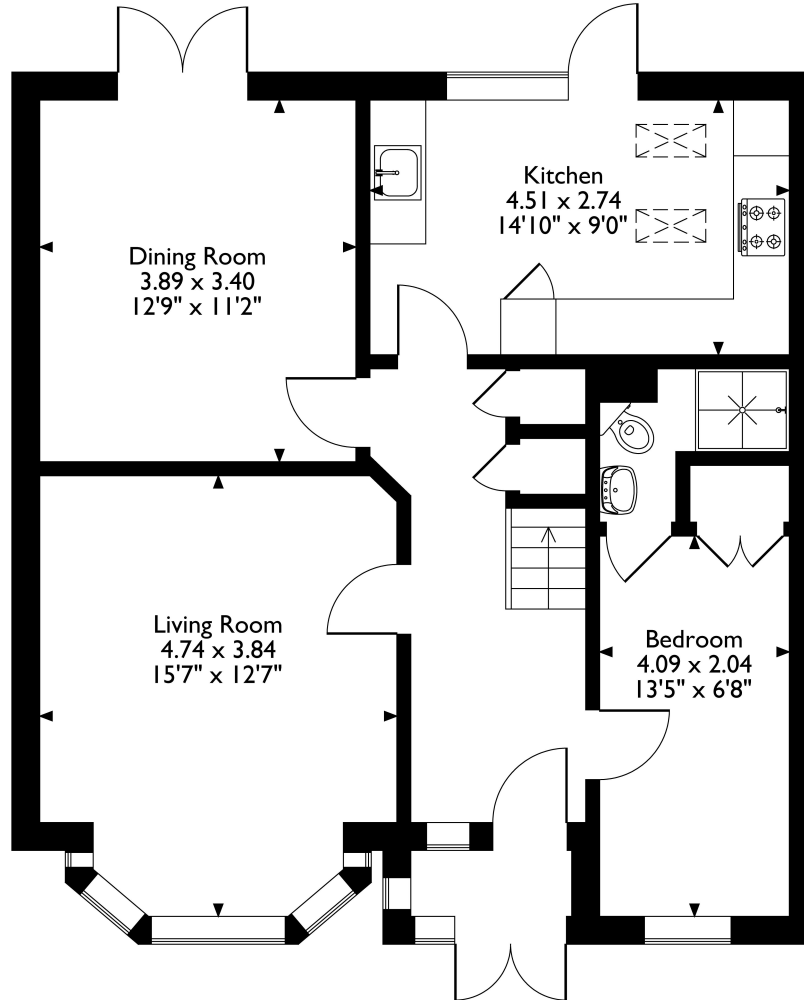


Additional Information

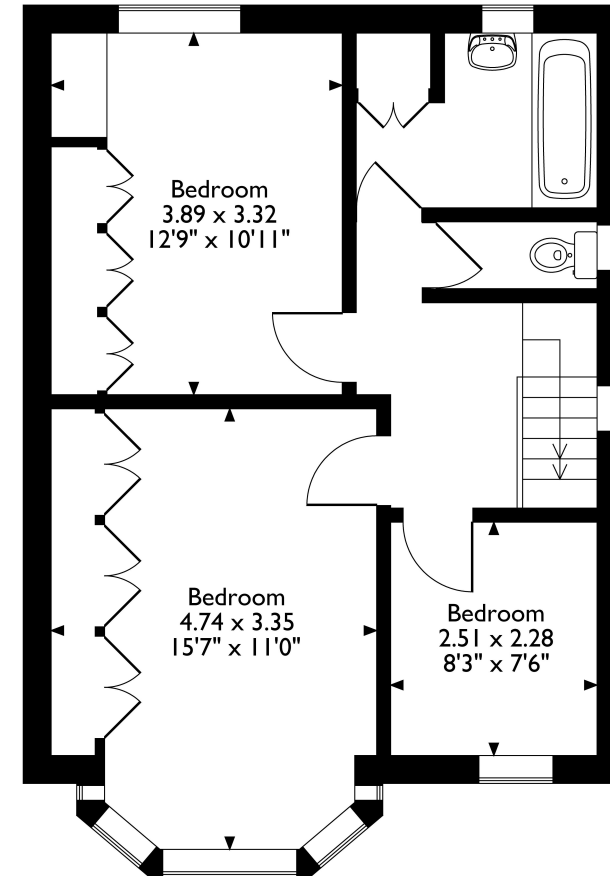
- Local Authority: Harrow
- Council Tax Band: E
- Deposit Amount: £3,173.00
- Reservation Payment: One weeks rent
- Energy Efficiency Rating: Band D
- Available Date: 11/08/2025



Church Drive, Harrow, HA2 7NR
Approximate Gross Internal Area
117 Sq M/1260 Sq Ft



Ground Floor



First Floor

Please note that the location of doors, windows and other items are approximate and this floorplan is to be used for illustrative purposes only. Unauthorized reproduction is prohibited.



REGISTERED OFFICE 2-4 PACKHORSE ROAD, GERRARDS CROSS, BUCKINGHAMSHIRE, ENGLAND, SL9 7QE. COMPANY NO. 07557114. VAT NO. GB211239453