



Beautifully Renovated Two-Bedroom Apartment located close to amenities
Chester Place, Northwood, HA6 2XX



Asking Price: £1,750 pcm

Beautifully Renovated Two-Bedroom Apartment located close to amenities

Chester Place, Northwood, HA6 2XX

-
- COMMUNAL ENTRANCE HALL • STAIRS TO ALL FLOORS • ENTRANCE HALL • LIVING ROOM WITH ACCESS TO BALCONY • MODERN FITTED KITCHEN • TWO BEDROOMS • BATHROOM • UNFURNISHED
-

Description

This fully renovated two-bedroom apartment offers modern living in an unbeatable location, just a short walk from Northwood High Street and the Metropolitan Line station. Flooded with natural light, the property boasts a bright and airy feel throughout. The spacious accommodation features a contemporary living area with private balcony, a sleek fully fitted kitchen, two well-proportioned bedrooms, and a modern bathroom finished to a high standard. Large windows in every room maximize natural light, enhancing the clean, modern design. Ideal for professionals, couples, or small families seeking convenience and comfort, this property combines a quiet residential setting with immediate access to local shops, cafés, and excellent transport links.

** An advance reservation payment of one weeks rent is required to secure

Location

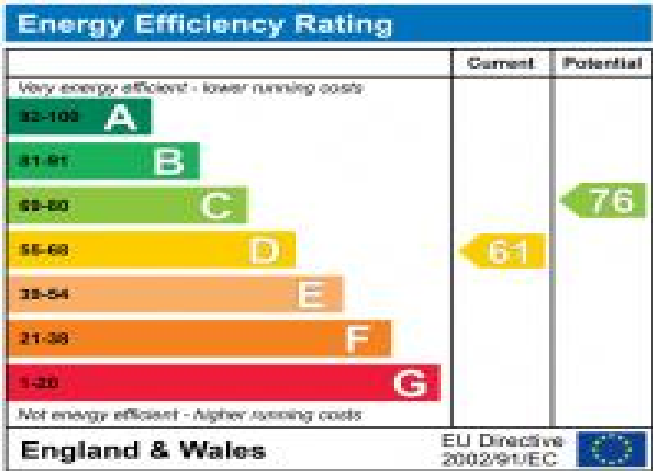
Northwood provides a range of shopping facilities including a Waitrose supermarket, a variety of restaurants and other amenities with the Metropolitan Line station providing access to Baker Street and the City. There is a plethora of state and private schooling together with a wide choice of recreational facilities, which include golf courses and fitness centres. The M1, M40 and M25 motorways are also accessible.



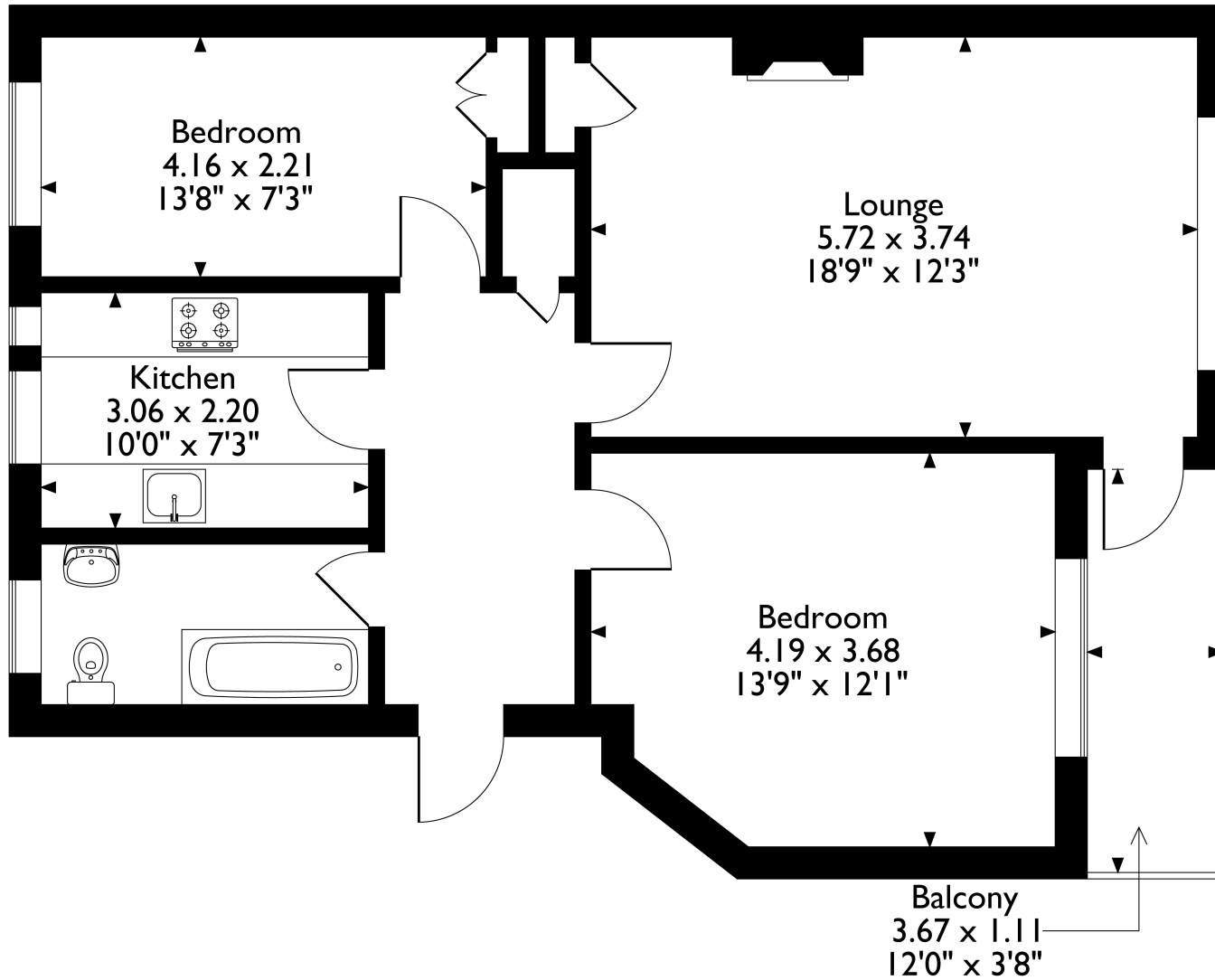


Additional Information

- Local Authority: Hillingdon
- Council Tax Band: C
- Deposit Amount: £2,019.00
- Reservation Payment: One weeks rent
- Energy Efficiency Rating: Band D
- Available Date: 11/08/2026



Chester Place, Green Lane, Northwood, HA6 2XX
Approximate Gross Internal Area
69 Sq M/743 Sq Ft



Please note that the location of doors, windows and other items are approximate and this floorplan is to be used for illustrative purposes only. Unauthorized reproduction is prohibited.



Middlesex | Hertfordshire | Buckinghamshire



REGISTERED OFFICE 2-4 PACKHORSE ROAD, GERRARDS CROSS, BUCKINGHAMSHIRE, ENGLAND, SL9 7QE. COMPANY NO. 07557114. VAT NO. GB211239453