



## A LOVELY FOUR BEDROOM DETACHED FAMILY HOME

St Mary's Avenue, Northwood, Middlesex, HA6 3AY

**ROBSONS**



St Mary's Avenue, Northwood, Middlesex, HA6 3AY

**DETACHED • FOUR BEDROOMS • FIVE  
RECEPTION ROOMS • OVER 2,200 SQFT •  
DRIVEWAY PARKING • LARGE REAR GARDEN •  
POTENTIAL TO EXTEND STPP • MODERN  
THROUGHOUT**

### Description

This impressive detached family home is presented to a modern finish throughout and boasts four bedrooms and two bathrooms to the first floor, five reception rooms, a kitchen/dining room, a utility room and w/c to the ground floor.

The property provides over 2,200 sqft of well-balanced accommodation set over two floors but has further potential to extend subject to the usual planning consents and permissions.

Externally, the property offers off street parking for multiple vehicles to the front and to the rear a large private and secluded garden.







Northwood provides a range of shopping facilities including Waitrose supermarket, a variety of restaurants and other amenities with the Metropolitan Line station providing access to Baker Street and the City. There is a plethora of state and private schooling together with a wide choice of recreational facilities, which include golf courses and fitness centres. The M1, M40 and M25 motorways are also accessible.

NB this property is situated within the proximity of the ULEZ, if your vehicle does not comply charges may apply.

### **Additional Information**

Tenure: Freehold

Local Authority: Three Rivers

Council Tax Band: G

Energy Efficiency Rating: C

For additional information, please refer to [www.robsonswb.com](http://www.robsonswb.com) or call us on: 01923 835355.





Approximate Gross Internal Area  
 Ground Floor = 126 sq m / 1,356 sq ft  
 First Floor = 79.7 sq m / 858 sq ft  
 Total = 205.7 sq m / 2,214 sq ft

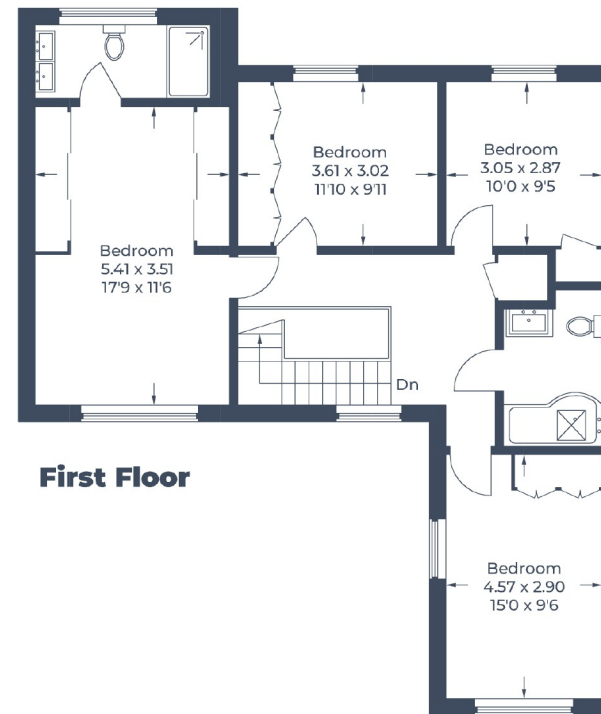
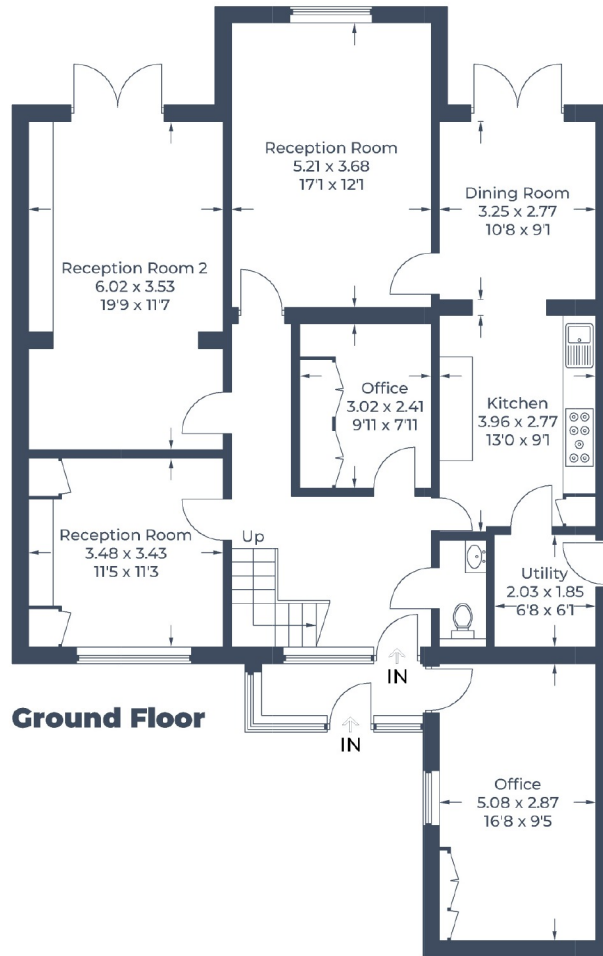


Illustration for identification purposes only,  
 measurements are approximate, not to scale.  
 © CJ Property Marketing Produced for Robsons

**ROBSONS**

7 Clive Parade, Northwood, HA6 2QF  
 Tel: 01923 835355 Email: northwood@robsonswb.com  
[www.robsonswb.com](http://www.robsonswb.com)

SCAN TO VISIT



OUR WEBSITE

Important notice: Robsons, their clients and any joint agents give notice that 1: They are not authorised to make or give any representations or warranties in relation to the property either here or elsewhere, either on their own behalf or on behalf of their client or otherwise. They assume no responsibility for any statement that may be made in these particulars. These particulars do not form part of any offer or contract and must not be relied upon as statements or representations of fact. 2: Any areas, measurements or distances are approximate. Plot sizes and dimensions are taken from Promap and are approximate. The text, photographs and plans are for guidance only and are not necessarily comprehensive. It should not be assumed that the property has all necessary planning, building regulation or other consents and Robsons have not tested any services, equipment or facilities. Purchasers must satisfy themselves by inspection or otherwise.