



A TWO BEDROOM, TWO BATHROOM SECOND FLOOR DUPLEX APARTMENT

Copper Beech Court, Murray Road, Northwood, Middlesex, HA6 2YJ

ROBSONS

Copper Beech Court, Murray Road, Northwood,
Middlesex, HA6 2YJ

**DUPLEX APARTMENT • TWO BEDROOMS •
TWO BATHROOMS • SPACIOUS
LIVING/DINING ROOM • KITCHEN •
DOWNSTAIRS W/C • GARAGE • OFF-STREET
PARKING • SHORT WALK TO NORTHWOOD
TOWN AND STATION • LIFT IN BLOCK**

Description

A very well-presented, spacious second-floor duplex apartment positioned within walking distance from the centre of Northwood and the Metropolitan Line station.

This two bedroom, two bathroom purpose-built apartment boasts a spacious living/dining room with a balcony, large kitchen, an exceptionally large master bedroom with en suite bathroom and a further bedroom and a family bathroom.

The property also benefits from a garage in a nearby block, residents off-street parking and a store room. The property also comes with a share of freehold, long lease and lift in block.





Northwood provides a range of shopping facilities including Waitrose supermarket, a variety of restaurants and other amenities with the Metropolitan Line station providing access to Baker Street and the City. There is a plethora of state and private schooling together with a wide choice of recreational facilities, which include golf courses and fitness centres. The M1, M40 and M25 motorways are also accessible.

NB this property is situated within the proximity of the ULEZ, if your vehicle does not comply charges may apply.

Additional Information

Tenure: Share of Freehold

Lease Length: 125 years from 25th March 1990

Service Charge: £3,000 p/a (£250 pcm)

Local Authority: London Borough of Hillingdon

Council Tax Band: F

Energy Efficiency Rating: C

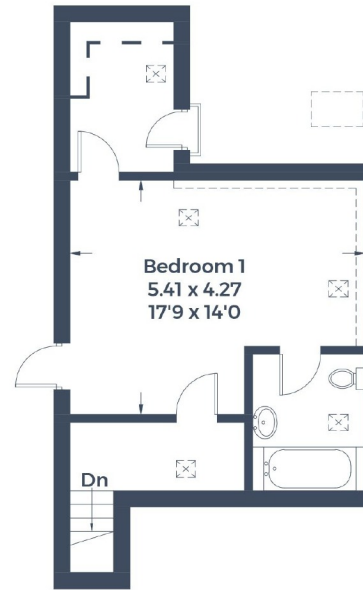
For additional information, please refer to www.robsonswb.com or call us on: 01923 835355.



Approximate Gross Internal Area
 Second Floor = 88.4 sq m / 952 sq ft
 Third Floor = 36.9 sq m / 398 sq ft
 Garage = 16.1 sq m / 174 sq ft
 Total = 141.4 sq m / 1524 sq ft



Second Floor



Third Floor



(Not Shown In Actual
Location / Orientation)

This plan is for layout guidance only. Not drawn to scale unless stated. Windows and door openings are approximate. Whilst every care is taken in the preparation of this plan, please check all dimensions, shapes and compass bearings before making any decisions reliant upon them.

© CJ Property Marketing

ROBSONS

7 Clive Parade, Northwood, HA6 2QF
 Tel: 01923 835355 Email: northwood@robsonswb.com
www.robsonswb.com

SCAN TO VISIT



OUR WEBSITE

Important notice: Robsons, their clients and any joint agents give notice that 1: They are not authorised to make or give any representations or warranties in relation to the property either here or elsewhere, either on their own behalf or on behalf of their client or otherwise. They assume no responsibility for any statement that may be made in these particulars. These particulars do not form part of any offer or contract and must not be relied upon as statements or representations of fact. 2: Any areas, measurements or distances are approximate. Plot sizes and dimensions are taken from Promap and are approximate. The text, photographs and plans are for guidance only and are not necessarily comprehensive. It should not be assumed that the property has all necessary planning, building regulation or other consents and Robsons have not tested any services, equipment or facilities. Purchasers must satisfy themselves by inspection or otherwise.