



## WELL PRESENTED FIVE BEDROOM BUNGALOW IN A SOUGHT AFTER LOCATION

The Mount, Rickmansworth, Hertfordshire WD3 4DW

**ROBSONS**



# WELL PRESENTED FIVE BEDROOM BUNGALOW IN A SOUGHT AFTER LOCATION

The Mount, Rickmansworth, Herts WD3 4DW

**THREE RECEPTION ROOMS • KITCHEN/  
BREAKFAST ROOM • UTILITY ROOM •  
BATHROOM WITH SEPARATE WC • FIVE  
BEDROOMS TWO WITH ENSUITE FACILITIES  
• SECLUDED REAR GARDEN • OFF STREET  
PARKING • GARAGE**

## Description

This imposing five bedroom detached bungalow is situated on a third of an acre plot in a desirable cul-de-sac location in Rickmansworth, perfect for families seeking a spacious home with flexible living accommodation.

The property comprises of three generously sized reception rooms and a large kitchen/breakfast room.

The principal bedroom has fitted wardrobes and an en-suite bathroom. The second bedroom also has an en-suite shower room. There are three additional bedrooms and a family bathroom.







A particular feature of this property is the beautiful secluded rear garden with a patio area for outside entertaining and a pond. The lawned garden is well maintained and planted with a variety of flowers, specimen trees, bushes and plants.

To the front of the property the large driveway provides ample off street parking and access to the garage.

### Location

Rickmansworth town centre is within easy reach providing a wide choice of boutique shops, coffee houses, restaurants and major supermarkets. The metropolitan and chiltern train lines connect to London Baker Street and beyond. The M25 motorway is available at Junction 18 connecting to the national motorway network. Major airports are also within reach. The area is well served for good quality private and state schools for all ages. Chorleywood offers everything for a sporting life, from cricket, football, tennis, horse riding, and golf. Water sports are also available at the Aquadrome in Rickmansworth.

### Additional Information

Tenure: Freehold

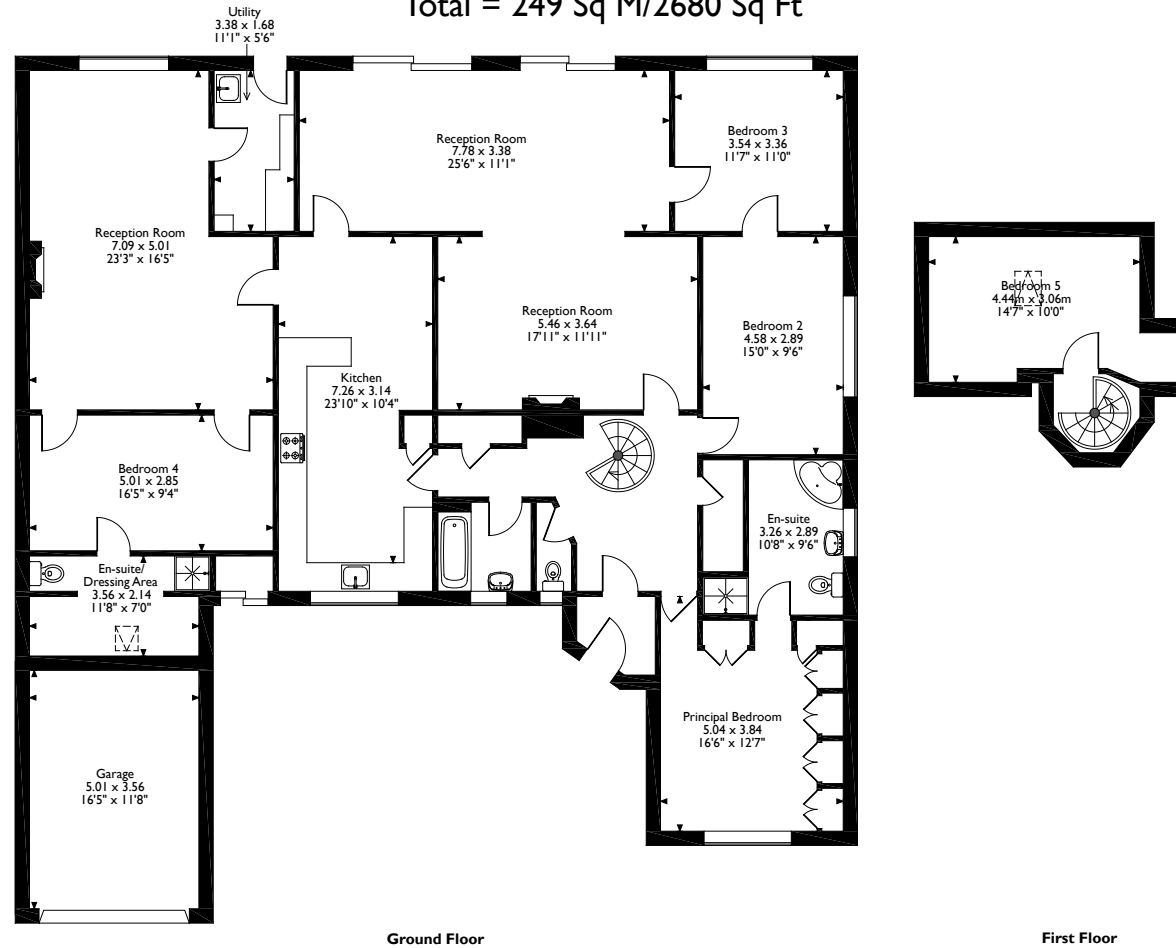
Local Authority: Three Rivers District Council

Energy Efficiency Rating: Band D





The Mount, Rickmansworth  
Approximate Gross Internal Area  
Main House = 231 Sq M/2486 Sq Ft  
Garage = 18 Sq M/194 Sq Ft  
Total = 249 Sq M/2680 Sq Ft



Please note that the location of doors, windows and other items are approximate and this floorplan is to be used for illustrative purposes only. Unauthorized reproduction is prohibited.

**ROBSONS**

130 High Street, Rickmansworth, Hertfordshire WD3 1AB  
Tel: 01923 777762 rickmansworth@robsonswb.com

[www.robsonswb.com](http://www.robsonswb.com)

[www.the-londonoffice.co.uk](http://www.the-londonoffice.co.uk)  
40 ST JAMES'S PLACE SW1

Important notice: Robsons, their clients and any joint agents give notice that 1: They are not authorised to make or give any representations or warranties in relation to the property either here or elsewhere, either on their own behalf or on behalf of their client or otherwise. They assume no responsibility for any statement that may be made in these particulars. These particulars do not form part of any offer or contract and must not be relied upon as statements or representations of fact. 2: Any areas, measurements or distances are approximate. Plot sizes and dimensions are taken from Promap and are approximate. The text, photographs and plans are for guidance only and are not necessarily comprehensive. It should not be assumed that the property has all necessary planning, building regulation or other consents and Robsons have not tested any services, equipment or facilities. Purchasers must satisfy themselves by inspection or otherwise.