



## AN IMPRESSIVE SIX BEDROOM FAMILY HOME ON THE EXCLUSIVE PINNER HILL ESTATE

---

South View Road, Pinner, HA5 3YA

**ROBSONS**



# A SIX BEDROOM FAMILY HOME ON THE EXCLUSIVE PINNER HILL ESTATE

South View Road, Pinner, HA5 3YA

**RECEPTION HALL • FOUR RECEPTION ROOMS  
• LARGE KITCHEN/BREAKFAST ROOM • STUDY  
• SIX BEDROOMS, TWO EN-SUITES • TWO  
FAMILY BATHROOMS • APPROX 0.37 ACRES •  
CARRIAGE DRIVEWAY • DOUBLE GARAGE**

## Description

An impressive six bedroom, four bathroom family residence, located on the highly desirable Pinner Hill estate. The ground floor comprises a grand reception hall with a guest cloakroom, a large reception room with a set of French doors providing plenty of natural light, a study, a family room, and a dining room. Completing the ground floor is a generously sized, modern fitted kitchen/breakfast room featuring a range of units providing ample storage space, integrated appliances and room for a dining table and chairs. The kitchen allows access to a utility room offering additional storage space, and a large games room. To the first floor there is an impressive master bedroom boasting an en-suite, a dressing room and a roof terrace, five further bedrooms with one en-suite, and two family bathrooms.







Externally the property benefits from approx.0.37 acres, with a well presented, mature garden that backs onto woodland and Pinner Hill Golf Course, providing a tranquil and private setting. To the front of the property there is a carriage driveway and a double garage with a lean-to.

### Location

Approached via a private road on the exclusive Pinner Hill Estate which comprises 115 established and individual family dwellings and the highly regarded Pinner Hill Golf Club. Pinner, Northwood and Northwood Hills can be found equally close by offering an array of boutique shops, restaurants, coffee houses and popular supermarkets. Transport facilities include local bus links and the Metropolitan Line at Northwood, Northwood Hills and Pinner stations, providing a fast and frequent service into the heart of Central London and beyond.

The area is well served for state and private primary and secondary schools, including St. Johns School for boys which is adjacent to the estate..

### Additional Information

Guide Price: Price on Application

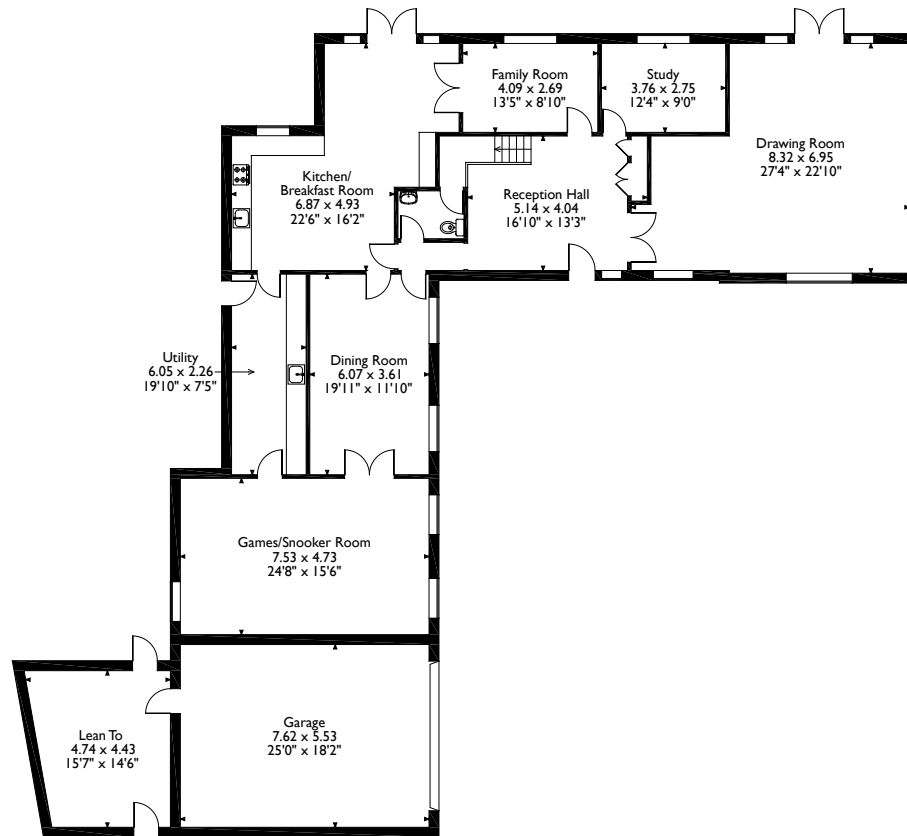
Tenure: Freehold

Local Authority: London Borough of Harrow

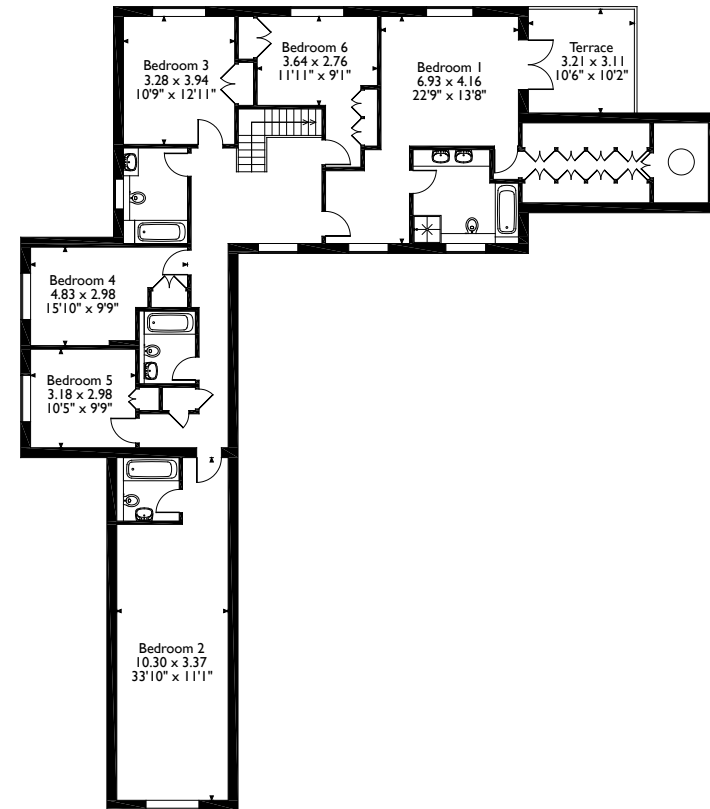
Energy Efficiency Rating: Band D



Silverwood, South View Road, Pinner  
Approximate Gross Internal Area  
Main House = 376 Sq M/4042 Sq Ft  
Garage = 42 Sq M/448 Sq Ft



**Ground Floor**



**First Floor**

Please note that the location of doors, windows and other items are approximate and this floorplan is to be used for illustrative purposes only. Unauthorized reproduction is prohibited.

**ROBSONS**

1 High Street, Pinner, Middlesex, HA5 5PJ  
Tel: 0208 866 8083 Pinner@robsonswb.com  
[www.robsonswb.com](http://www.robsonswb.com)

[www.the-londonoffice.co.uk](http://www.the-londonoffice.co.uk)  
40 ST JAMES'S PLACE SW1

Important notice: Robsons, their clients and any joint agents give notice that 1: They are not authorised to make or give any representations or warranties in relation to the property either here or elsewhere, either on their own behalf or on behalf of their client or otherwise. They assume no responsibility for any statement that may be made in these particulars. These particulars do not form part of any offer or contract and must not be relied upon as statements or representations of fact. 2: Any areas, measurements or distances are approximate. Plot sizes and dimensions are taken from Promap and are approximate. The text, photographs and plans are for guidance only and are not necessarily comprehensive. It should not be assumed that the property has all necessary planning, building regulation or other consents and Robsons have not tested any services, equipment or facilities. Purchasers must satisfy themselves by inspection or otherwise.