



**AN ATTRACTIVE FOUR BEDROOM, THREE BATHROOM DETACHED FAMILY HOME
IN EXCESS 2,530 SQ.FT.**

Sherfield Avenue, Rickmansworth, Hertfordshire, WD3 1NQ

ROBSONS

Sherfield Avenue, Rickmansworth, Hertfordshire,
WD3 1NQ

**THREE RECEPTION ROOMS • KITCHEN •
UTILITY ROOM • GUEST WC • PRINCIPAL
BEDROOM WITH ENSUITE • GUEST DOUBLE
BEDROOM WITH ENSUITE • TWO FURTHER
DOUBLE BEDROOMS • ATTRACTIVE REAR
GARDEN • ELECTRIC GATED DRIVEWAY &
GARAGE • CCTV**

Description

Set behind electric gates and showcasing crisp and modern interiors over 2530sq ft of living space, is this beautiful four double bedroom, three bathroom detached family home. Finished to a high specification the property benefits from a 27ft state of the art kitchen/diner with island and bi folding doors, underfloor heating and CCTV.

This outstanding home offers three spacious reception rooms, two en suite bathrooms, a garage and a generous gated driveway for multiple cars. The property also comes to the market with no onward chain.





Upon entering the property, you are greeted by a welcoming open hallway with a guest WC. There is a front aspect reception room, a dining room, and a second reception room with bi fold doors opening out to the garden. The impressive modern kitchen/family room is a great space for the family to enjoy.

The spacious kitchen offers a range of stylish units providing ample storage space, integrated appliances including two oven units, a large kitchen island/breakfast bar and bi fold doors opening out to the garden.

On the first floor there is a principal bedroom with an ensuite, a guest double bedroom with an ensuite, two further double bedrooms and a family bathroom.

Outside, this lovely family home enjoys a well manicured rear garden and a patio and decked area to enjoy outside dining. To the front is an electric gated driveway providing off-street parking for multiple cars, a garage and side access to the rear garden.

Location

Tenure: Freehold

Local Authority: Three Rivers District Council

Council Tax Band: G

Energy Efficiency Rating: G

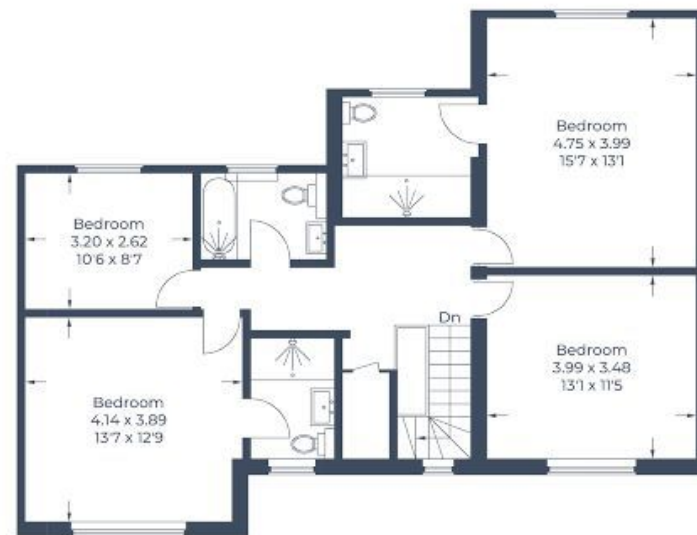
For additional information, please refer to www.robsonswb.com or call us on: 01923 777762.



Approximate Gross Internal Area
 Ground Floor = 145.0 sq m / 1,561 sq ft
 (Including Garage)
 First Floor = 90.3 sq m / 972 sq ft
 Total = 235.3 sq m / 2,533 sq ft



Ground Floor



First Floor

Illustration for identification purposes only,
 measurements are approximate, not to scale.
 © CJ Property Marketing Produced for Robsons

ROBSONS

130 High Street, Rickmansworth WD3 1AB
 Tel: 01923 777762 Email: rickmansworth@robsonswb.com

www.robsonswb.com

SCAN TO VISIT



OUR WEBSITE

Important notice: Robsons, their clients and any joint agents give notice that 1: They are not authorised to make or give any representations or warranties in relation to the property either here or elsewhere, either on their own behalf or on behalf of their client or otherwise. They assume no responsibility for any statement that may be made in these particulars. These particulars do not form part of any offer or contract and must not be relied upon as statements or representations of fact. 2: Any areas, measurements or distances are approximate. Plot sizes and dimensions are taken from Promap and are approximate. The text, photographs and plans are for guidance only and are not necessarily comprehensive. It should not be assumed that the property has all necessary planning, building regulation or other consents and Robsons have not tested any services, equipment or facilities. Purchasers must satisfy themselves by inspection or otherwise.