



A WELL PRESENTED FOUR BEDROOM DETACHED BUNGALOW

Stanley Road, Northwood, Middlesex

ROBSONS

A WELL PRESENTED FOUR BEDROOM DETACHED BUNGALOW

Stanley Road, Northwood, Middlesex

NEWLY REFURBISHED • DETACHED BUNGALOW • 4 BEDROOMS • 3 BATHROOMS • OPEN PLAN KITCHEN/LIVING AREA • REAR GARDEN WITH PATIO • OFF-STREET PARKING • GARAGE

Description

Conveniently located on a popular tree lined residential road between Northwood and Northwood Hills, this unique 4 bedroom detached chalet bungalow has recently undergone full refurbishment bringing the property to an immaculate standard. Offering versatile accommodation it benefits from four bedrooms, three bathrooms and an open plan kitchen/living area, this property also provides off street parking for multiple vehicles, single garage and a landscaped secluded rear garden with a paved patio perfect for outdoor entertaining.

Location

Northwood provides a range of shopping facilities, a Waitrose supermarket, restaurants and the Metropolitan Line Station providing access to Baker Street and the city beyond. The area has a range of both private and state schools. Places of worship and recreational facilities are also well catered for in the surrounding area and major motorway links to M25 and M1 are nearby



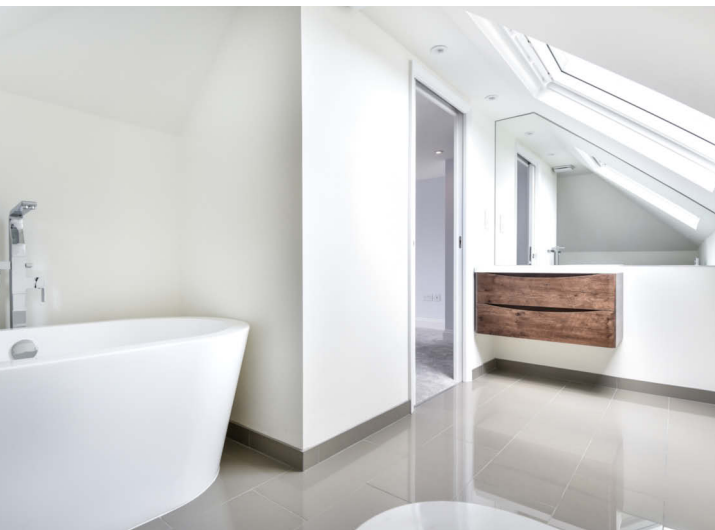


Additional Information

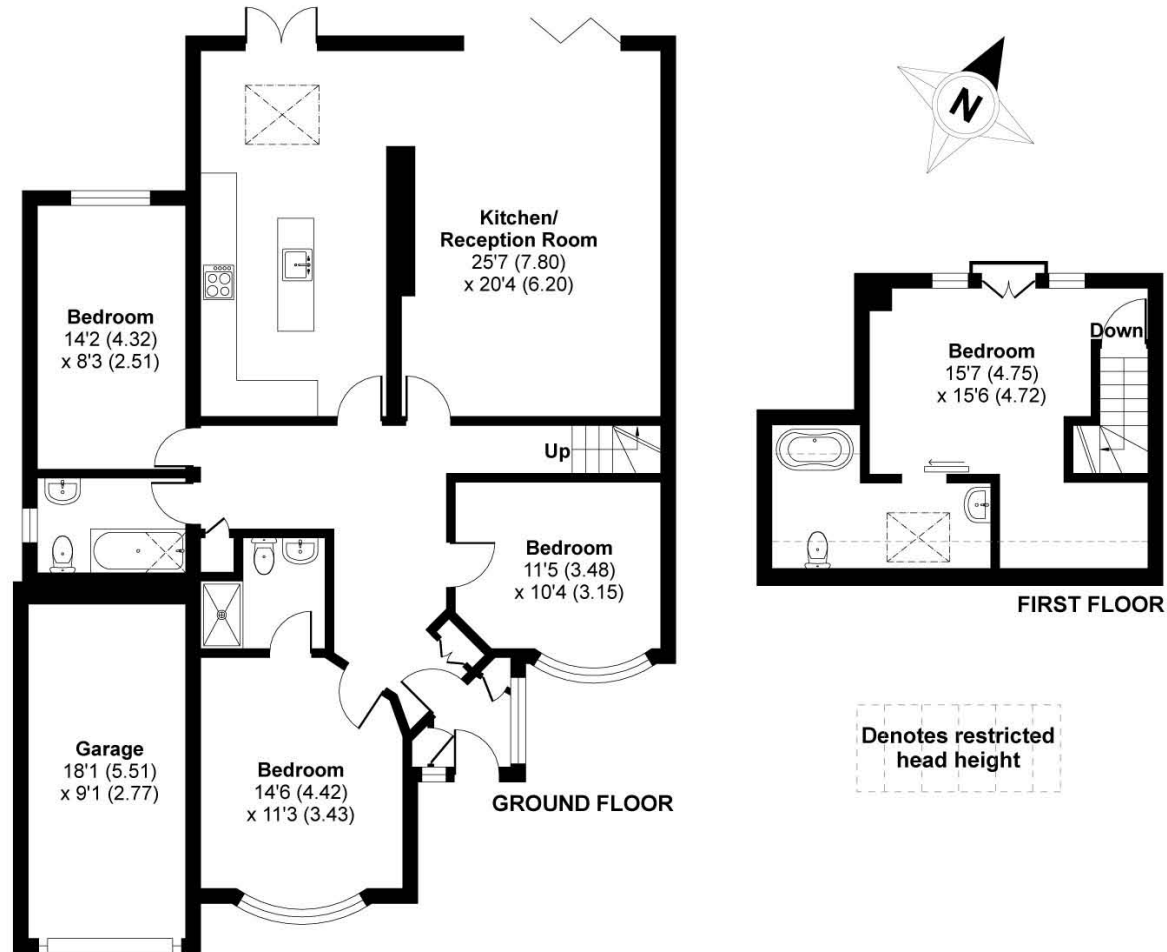
District Council : London Borough of Hillingdon

Energy Efficiency Rating : Band D

Tenure : Freehold



APPROX. GROSS INTERNAL FLOOR AREA 1649 SQ FT 153 SQ METRES (EXCLUDES RESTRICTED HEAD HEIGHT)



'For illustrative purposes only - not to scale. The position and size of doors, windows, appliances and other features are approximate only.'

Whilst every attempt has been made to ensure the accuracy of the floor plan contained here, measurements of doors, windows and rooms are approximate and no responsibility is taken for any error, omission or misstatement. These plans are for representation purposes only as defined by RICS Code of Measuring Practice and should be used as such by any prospective purchaser. Specifically no guarantee is given on the total square footage of the property if quoted on this plan. Any figure given is for initial guidance only and should not be relied on as a basis of valuation.

ROBSONS

53 Green Lane, Northwood, Middlesex HA6 3AE
Tel: 01923 835355 : chris.reeves@robsonswb.com

www.robsonswb.com

www.the-londonoffice.co.uk
40 ST JAMES'S PLACE SW1

Important notice: Robsons, their clients and any joint agents give notice that 1: They are not authorised to make or give any representations or warranties in relation to the property either here or elsewhere, either on their own behalf or on behalf of their client or otherwise. They assume no responsibility for any statement that may be made in these particulars. These particulars do not form part of any offer or contract and must not be relied upon as statements or representations of fact. 2: Any areas, measurements or distances are approximate. Plot sizes and dimensions are taken from Promap and are approximate. The text, photographs and plans are for guidance only and are not necessarily comprehensive. It should not be assumed that the property has all necessary planning, building regulation or other consents and Robsons have not tested any services, equipment or facilities. Purchasers must satisfy themselves by inspection or otherwise.