



A two bedroom ground floor maisonette in sought after location
West End Court,, HA5 1BP

ROBSONS

Asking Price: £1,650 pcm

A two bedroom ground floor maisonette in sought after location

West End Court,, HA5 1BP

• ENTRANCE HALL • KITCHEN OPEN PLAN TO • MODERN KITCHEN • TWO BEDROOMS ONE WITH FITTED WARDROBES • FAMILY BATHROOM • COMMUNAL GROUNDS • ON STREET PARKING • UNFURNISHED

Description

Robsons are pleased to present to the market this two-bedroom ground floor maisonette, ideally situated close to Pinner Village and within the catchment area for West Lodge Primary School. The property offers a bright and spacious open-plan kitchen/lounge, two double bedrooms, and a modern family bathroom.

**** An advance reservation payment of one weeks rent is required to secure the property ****

Location

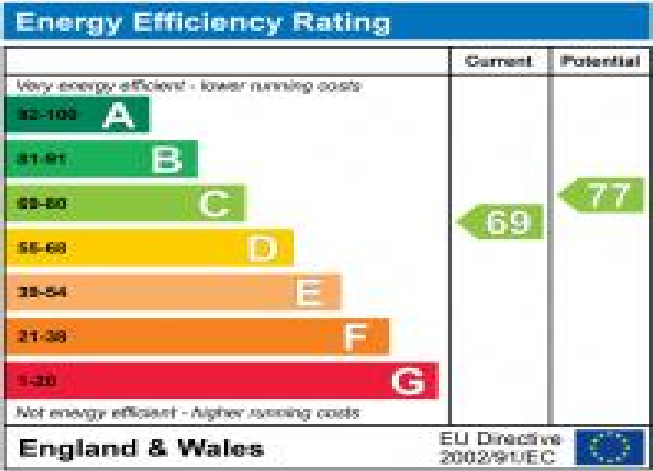
Set in a quiet residential area with excellent transport links and local amenities nearby. The property is being offered unfurnished and is available now. West End Court is situated a few minutes' walk from Pinner High Street and the Metropolitan Line Station, with West Lodge Primary School close by



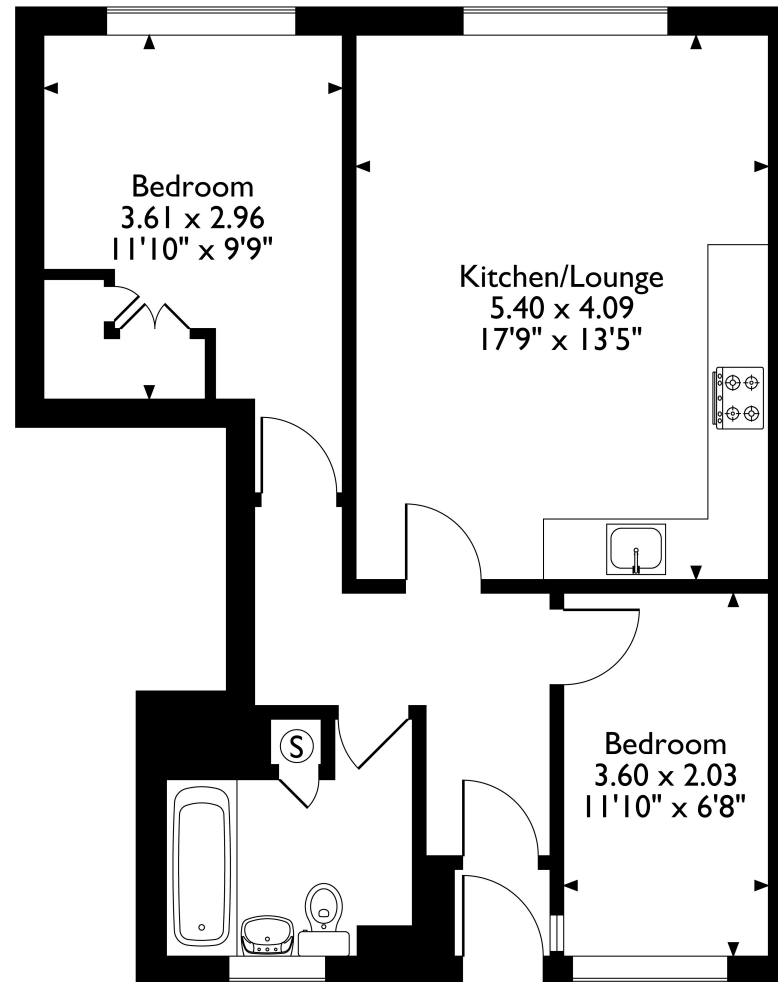


Additional Information

- Local Authority: Harrow
- Council Tax Band: C
- Deposit Amount: £1,903.00
- Reservation Payment: One weeks rent
- Energy Efficiency Rating: Band C
- Available Date: 26/06/2025



West End Court, West End Avenue, Pinner, HA5 1BP
Approximate Gross Internal Area
56 Sq M/603 Sq Ft



Ground Floor Flat

Please note that the location of doors, windows and other items are approximate and this floorplan is to be used for illustrative purposes only. Unauthorized reproduction is prohibited.

