



A four bedroom three bathroom family home on a popular residential road.
The Drive, Rickmansworth, WD3 4DU

ROBSONS

Asking Price: £3,750 pcm

A four bedroom three bathroom family home on a popular residential road.

The Drive, Rickmansworth, WD3 4DU

• PRESTIGIOUS ROAD • FOUR BEDROOMS • THREE BATHROOMS • TWO RECEPTION ROOMS • FITTED KITCHEN • UTILITY ROOM • GARDEN • DOUBLE GARAGE • DRIVEWAY WITH PARKING • UNFURNISHED

Description

A rare opportunity to rent a four bedroom three bathroom detached family home on one of Rickmansworth's most prestigious roads.

This spacious property briefly comprises of; entrance hall, downstairs shower room and w/c, light filled open plan living and dining room overlooking the rear garden, modern fitted kitchen with utility room and fourth bedroom/study.

To the first floor there is the principle bedroom with en suite shower room, two further bedrooms and family bathroom.

Externally, there is a pretty rear garden and to the front a driveway with ample parking. The property further benefits from a double garage. Available immediately, unfurnished.

Location

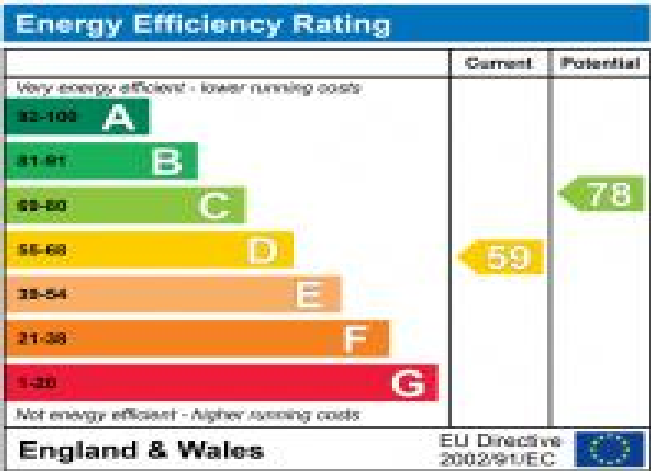
Rickmansworth offers a selection of shops including Marks & Spencers food hall, Tesco and Waitrose superstore. There is an excellent range of schooling both in the private and state sectors, including Charlotte House school for girls, The Royal Masonic girls school, Merchant Taylors, York House, and St. Clement Danes together with a variety of leisure activities. The Metropolitan/Chiltern line station provides a frequent service to Baker Street and Marylebone and the nearby M25 (jctn 18) gives access to London, the airports and the motorway network.





Additional Information

- Local Authority: Three Rivers
- Council Tax Band:
- Deposit Amount: £4,326.00
- Reservation Payment: ones weeks rent
- Energy Efficiency Rating: Band D
- Available Date: 03/07/2026



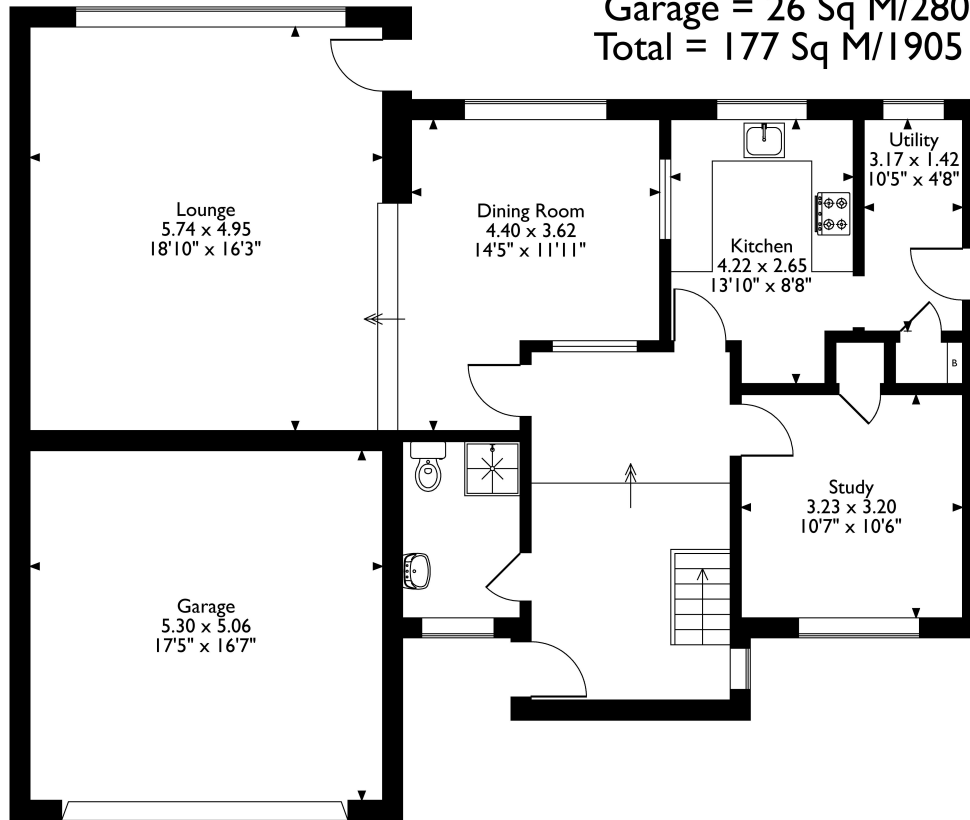
The Drive, Rickmansworth, Hertfordshire, WD3 4DU

Approximate Gross Internal Area

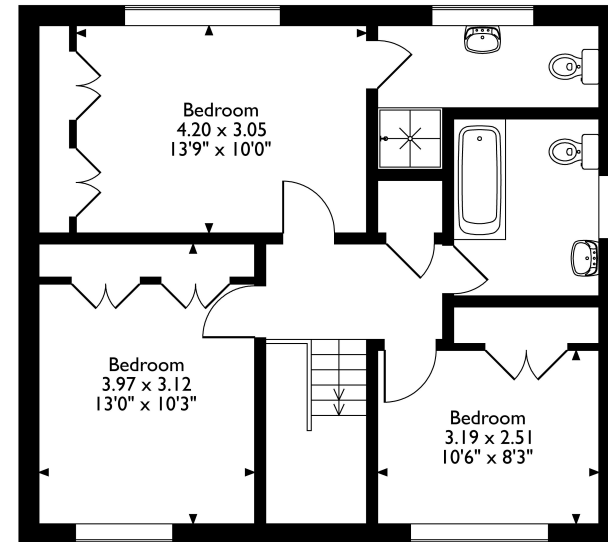
Main House = 151 Sq M/1625 Sq Ft

Garage = 26 Sq M/280 Sq Ft

Total = 177 Sq M/1905 Sq Ft



Ground Floor



First Floor

Please note that the location of doors, windows and other items are approximate and this floorplan is to be used for illustrative purposes only. Unauthorized reproduction is prohibited.



REGISTERED OFFICE 2-4 PACKHORSE ROAD, GERRARDS CROSS, BUCKINGHAMSHIRE, ENGLAND, SL9 7QE. COMPANY NO. 07557114. VAT NO. GB211239453