



**A STUNNING TWO BEDROOM TWO BATHROOM FIRST FLOOR APARTMENT IN THE  
HEART OF CHORLEYWOOD**

Betjeman Gardens, Chorleywood, Herts, WD3 5QY

**ROBSONS**

Betjeman Gardens, Chorleywood, Herts, WD3 5QY

**STUNNING RECEPTION ROOM/MODERN KITCHEN • TWO DOUBLE BEDROOMS • TWO BATHROOMS • PRIVATE TERRACE WITH FABULOUS VIEWS • COMMUNAL GARDENS • ALLOCATED PARKING & VISITOR PARKING • WALKING DISTANCE TO CHORLEYWOOD STATION • APPROXIMATELY 1,173 SQ FT**

### Description

Offering over 1,100 sq. ft. of stylish and comfortable accommodation, this impressive first floor apartment combines modern living with a highly convenient location. Situated within walking distance of Chorleywood village, local amenities, excellent transport links, and well-regarded schools, this property is perfect for professionals, downsizers, or small families.

The apartment welcomes you with a spacious entrance hallway, featuring two large storage cupboards, leading through to a beautifully presented open-plan kitchen/reception room. French doors open onto a generously sized private balcony, ideal for relaxing while enjoying scenic views over Chorleywood.





The contemporary kitchen is fitted with a range of sleek units, integrated appliances, and ample storage space. The principal bedroom benefits from fitted wardrobes and an en-suite bathroom with both bath and shower. A second well-proportioned double bedroom also includes fitted wardrobes and is served by a modern family bathroom.

Further highlights include access to attractive communal gardens, an allocated parking space, and additional residents' parking. The property is complete with a telephone entry security system, adding peace of mind.

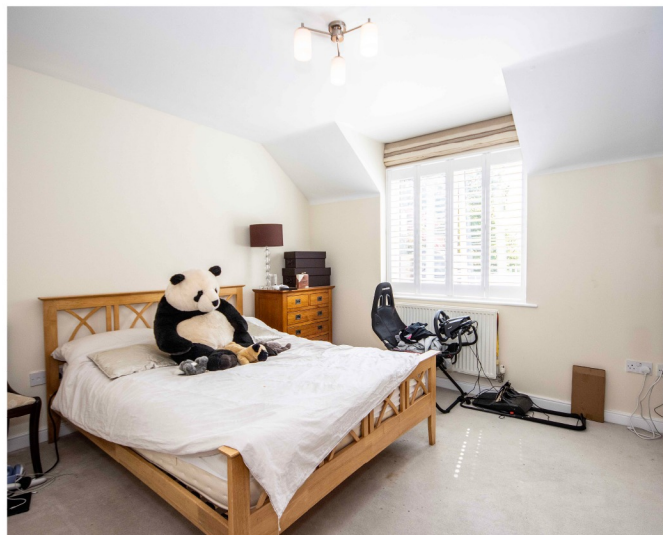
### Location

Chorleywood Village's facilities include a wide choice of boutique shops, coffee houses and restaurants. The area is also well served for sought after state and private schools. Leisure facilities include golf courses, cricket, football clubs, horse riding and fitness centres, together with Chorleywood Common and Rickmansworth Aquadrome. The Metropolitan and Main lines at Chorleywood Station offer a frequent service into London and beyond.

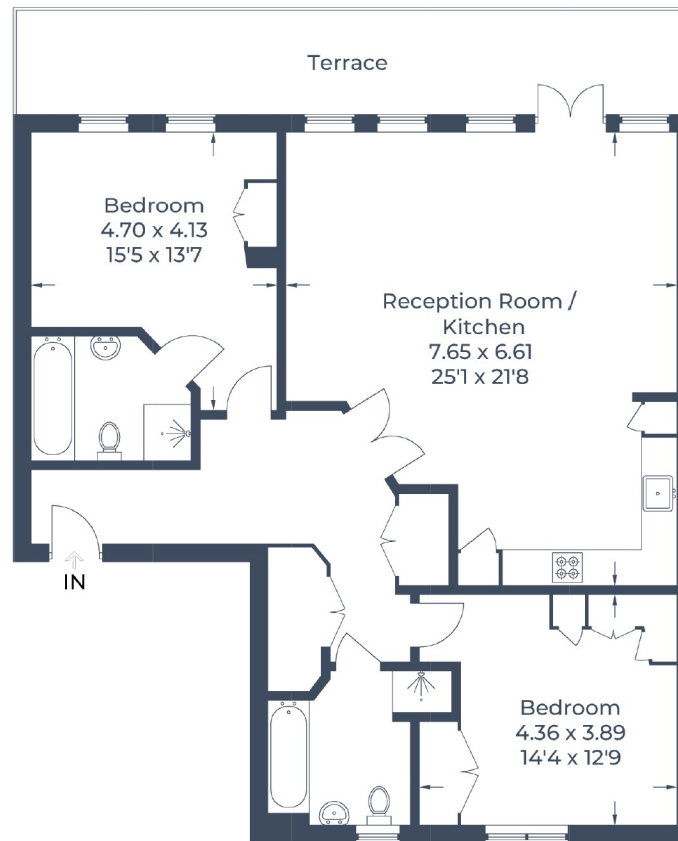
### Additional Information

Tenure: Leasehold  
Local Authority: Three Rivers District Council  
Council Tax Band: F  
Energy Efficiency Rating: C  
Leaser Terms: 107 years remaining  
Service Charge: £2,800 pa  
Ground Rent: £210.00 pa

For additional information, please refer to [www.robsonsworld.com](http://www.robsonsworld.com) or call us on: 01923 285525.



Approximate Gross Internal Area  
109 sq m / 1,173 sq ft



### First Floor

Illustration for identification purposes only,  
measurements are approximate, not to scale.

© CJ Property Marketing

# ROBSONS

2 New Parade, Chorleywood, Hertfordshire, WD3 5NJ  
Tel: 01923 285525 Email: [chorleywood@robsonsworld.com](mailto:chorleywood@robsonsworld.com)

[www.robsonsworld.com](http://www.robsonsworld.com)

SCAN TO VISIT



OUR WEBSITE

Important notice: Robsons, their clients and any joint agents give notice that 1: They are not authorised to make or give any representations or warranties in relation to the property either here or elsewhere, either on their own behalf or on behalf of their client or otherwise. They assume no responsibility for any statement that may be made in these particulars. These particulars do not form part of any offer or contract and must not be relied upon as statements or representations of fact. 2: Any areas, measurements or distances are approximate. Plot sizes and dimensions are taken from Promap and are approximate. The text, photographs and plans are for guidance only and are not necessarily comprehensive. It should not be assumed that the property has all necessary planning, building regulation or other consents and Robsons have not tested any services, equipment or facilities. Purchasers must satisfy themselves by inspection or otherwise.