



AN EXTENDED 4 BEDROOM, 2 BATHROOM, 3 RECEPTION ROOM FAMILY HOME

Northumberland Road, North Harrow, HA2 7RB

ROBSONS

Northumberland Road, North Harrow, HA2 7RB

**ENTRANCE HALLWAY • GUEST CLOAKROOM •
THREE RECEPTION ROOMS • KITCHEN/DINER
WITH UNDERFLOOR HEATING • UTILITY
ROOM • FOUR DOUBLE BEDROOMS • TWO
BATH/SHOWER ROOMS (ONE EN-SUITE) •
SIZEABLE REAR GARDEN • OFF-STREET
PARKING VIA OWN DRIVEWAY**

Description

A bright, spacious and well-proportioned four bedroom, two bathroom extended family home, offering 1,794 sq. ft across two floors. Situated close to both Pinner and North Harrow's amenities, as well as the Metropolitan Line Stations, the property provides a most convenient lifestyle.

The ground floor comprises an entrance hallway with a guest cloakroom, two reception rooms with one benefiting from access to the garden, a generous study, and a spacious kitchen/diner with underfloor heating and an adjoining utility room with a sink/drain.





To the first floor there is a principal bedroom with fitted wardrobes and an en-suite shower room, complete with underfloor heating, three further double bedrooms, and a large four-piece family bathroom. The property offers a sizeable rear garden that is laid to lawn with two patio areas and the added benefit of side access. Off-street parking is available at the front of the property via your own driveway.

Location

Northumberland Road is a short walk from Pinner & North Harrow's amenities, as well as the Metropolitan Line Stations, which provide a regular service into London. Rayners Lane and Hatch End High Streets are also close by, as is Harrow Town Centre.

The area is well served by primary and secondary schooling, including St John Fisher Primary School and Nower Hill Secondary School, both of which are a short walk away.

Additional Information

Tenure: Freehold

Local Authority: London Borough of Harrow

Council Tax Band: E

Energy Efficiency Rating: D

For additional information, please refer to www.robsonswb.com or call us on: 020 8866 8083.



Approximate Gross Internal Area
 Ground Floor = 89.1 sq m / 959 sq ft
 First Floor = 77.6 sq m / 835 sq ft
 Total = 166.7 sq m / 1,794 sq ft

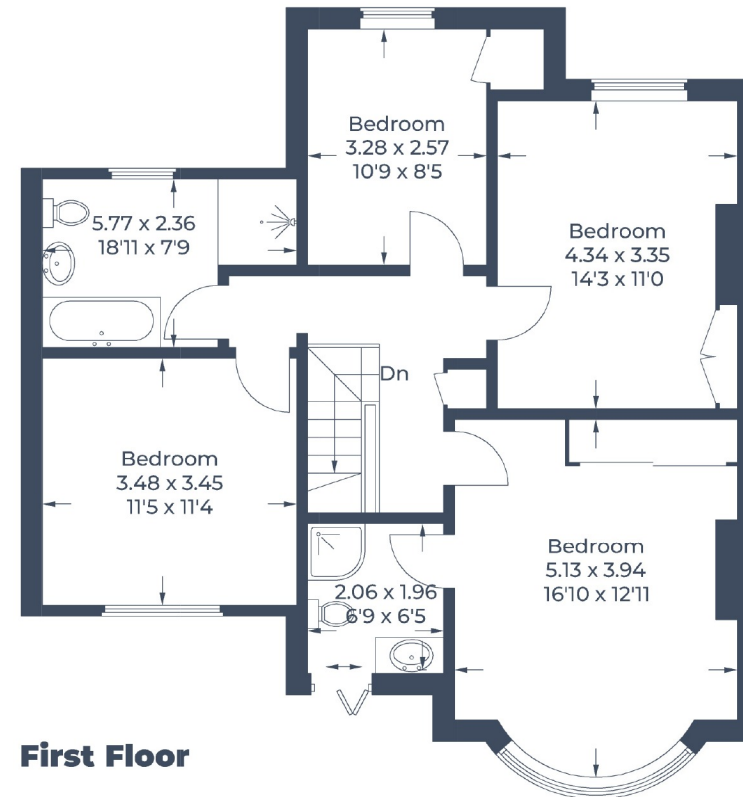
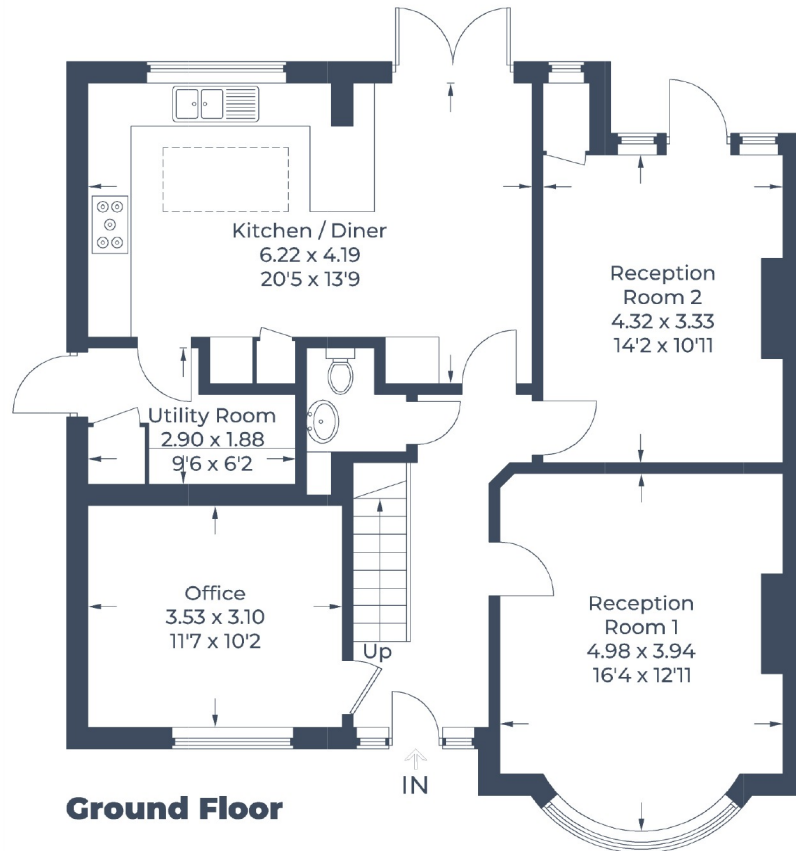


Illustration for identification purposes only,
 measurements are approximate, not to scale.
 © CJ Property Marketing Produced for Robsons

ROBSONS

1 High Street, Pinner HA5 5PJ
 Tel: 020 8866 8083 Email: pinner@robsonswb.com
www.robsonswb.com

SCAN TO VISIT



OUR WEBSITE

Important notice: Robsons, their clients and any joint agents give notice that 1: They are not authorised to make or give any representations or warranties in relation to the property either here or elsewhere, either on their own behalf or on behalf of their client or otherwise. They assume no responsibility for any statement that may be made in these particulars. These particulars do not form part of any offer or contract and must not be relied upon as statements or representations of fact. 2: Any areas, measurements or distances are approximate. Plot sizes and dimensions are taken from Promap and are approximate. The text, photographs and plans are for guidance only and are not necessarily comprehensive. It should not be assumed that the property has all necessary planning, building regulation or other consents and Robsons have not tested any services, equipment or facilities. Purchasers must satisfy themselves by inspection or otherwise.