



**A 3 BEDROOM, 3 BATHROOM DETACHED BUNGALOW IN A DESIRABLE LOCATION**

Eastfields, Eastcote, Pinner HA5 2SR

**ROBSONS**



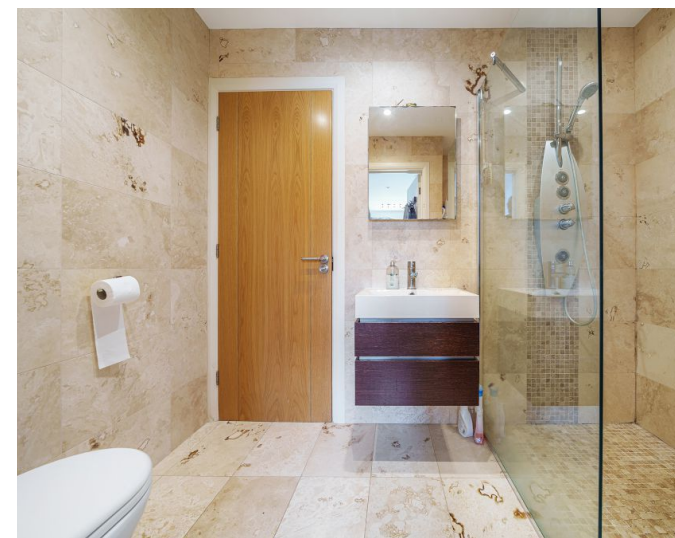
Eastfields, Eastcote, Pinner HA5 2SR

**DETACHED • ENTRANCE PORCH & HALLWAY  
• LOUNGE • MODERN KITCHEN / DINER •  
THREE DOUBLE BEDROOMS • THREE BATH /  
SHOWER ROOMS (EN-SUITES) • AIR  
CONDITIONING • ATTRACTIVE REAR GARDEN  
• OFF-STREET PARKING • SCOPE TO FURTHER  
EXTEND (STPP)**

### Description

A charming three-bedroom, three-bathroom extended bungalow that has been well-maintained throughout, with an attractive rear garden and off-street parking, perfectly placed for both Pinner and Eastcote's amenities.

The property comprises an entrance porch and hallway, a front aspect lounge that is flooded with natural light, three good-sized double bedrooms, all benefitting from modern en-suites, and a well-equipped kitchen / diner. The kitchen features a range of modern units providing ample storage space, with integrated appliances and the added benefit of a pantry.







Externally, this charming home offers a well-presented rear garden that is of good size, with a small lawn to the front of the property, along with off-street parking.

### **Location**

Eastfields is located off Bridle Road, just a short distance from both Eastcote and Pinner High Streets, which both offer a variety of shopping facilities, restaurants, coffee houses and popular supermarkets. For commuters, the Metropolitan and the Piccadilly Lines are available at nearby Eastcote or Pinner Underground Stations, with local bus routes also accessible.

The area is well served by primary and secondary schooling, with Cannon Lane Primary and Pinner High School nearby, as well as there being a number of local parks and open spaces within the area.

### **Additional Information**

Tenure: Freehold

Local Authority: London Borough of Hillingdon

Council Tax Band: F

Energy Efficiency Rating: D

For additional information, please refer to [www.robsonswb.com](http://www.robsonswb.com) or call us on: 020 8866 8083.

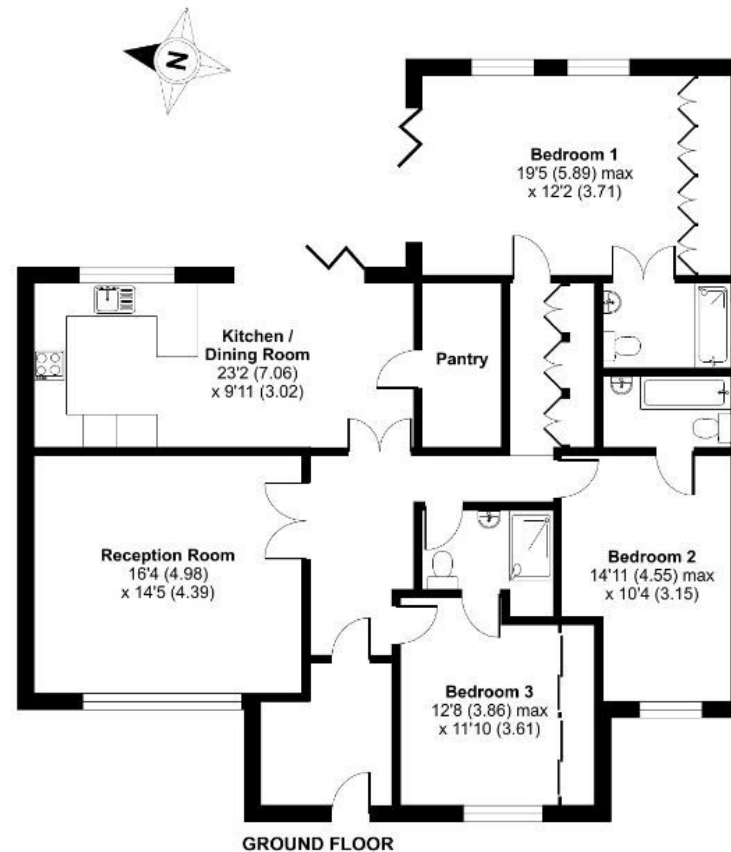




## Eastfields, Pinner, HA5

Approximate Area = 1444 sq ft / 134.1 sq m

For identification only - Not to scale



# ROBSONS

1 High Street, Pinner HA5 5PJ

Tel: 020 8866 8083 Email: [pinner@robsonsworld.com](mailto:pinner@robsonsworld.com)

[www.robsonsworld.com](http://www.robsonsworld.com)

Important notice: Robsons, their clients and any joint agents give notice that 1: They are not authorised to make or give any representations or warranties in relation to the property either here or elsewhere, either on their own behalf or on behalf of their client or otherwise. They assume no responsibility for any statement that may be made in these particulars. These particulars do not form part of any offer or contract and must not be relied upon as statements or representations of fact. 2: Any areas, measurements or distances are approximate. Plot sizes and dimensions are taken from Promap and are approximate. The text, photographs and plans are for guidance only and are not necessarily comprehensive. It should not be assumed that the property has all necessary planning, building regulation or other consents and Robsons have not tested any services, equipment or facilities. Purchasers must satisfy themselves by inspection or otherwise.