



**A BRIGHT, MODERN & SPACIOUS 4/5 BEDROOM, 3 BATHROOM DETACHED BUNGALOW**

Pheasants Way, Rickmansworth, Hertfordshire, WD3 7EX

**ROBSONS**



Pheasants Way, Rickmansworth, Hertfordshire,  
WD3 7EX

**SITTING ROOM • DINING ROOM •  
KITCHEN/FAMILY ROOM • UTILITY ROOM •  
DOWNSTAIRS BEDROOM & SHOWER ROOM •  
PRINCIPAL BEDROOM WITH ENSUITE • THREE  
FURTHER BEDROOMS • FAMILY BATHROOM  
• REAR GARDEN WITH HOME OFFICE/GYM &  
SUMMER HOUSE • OFF-STREET PARKING &  
GARAGE**

### Description

A fabulous 4/5 bedroom, 3 bathroom detached chalet bungalow providing over 2,100 sq. ft of modern and stylish interiors, with an attractive rear garden with home office/gym, off street parking and a garage.

The ground floor comprises a welcoming entrance hallway, a front aspect sitting room and a spacious, open plan kitchen family room overlooking the garden. The kitchen offers a variety of modern white gloss units, integrated appliances a kitchen island with breakfast bar providing additional worktop space and a separate utility area. Completing the ground floor is a dining room, a bedroom and shower room.







To the first floor is a principal bedroom with fitted wardrobes and an ensuite, three further bedrooms and a spacious family bathroom. Externally, this lovely family home offers a well presented rear garden laid to lawn with shrubs and flowerbeds, a patio area to enjoy outside dining and a home office/gym. To the front is a driveway providing off street parking and side access to the rear garden. The property also benefits from a garage which is situated to the side of the property.

### Location

Rickmansworth town centre has a wide range of boutique shops, coffee houses, restaurants and major supermarkets. The Metropolitan and Chiltern line train services connect you to London Baker Street, Marylebone Station and beyond. The M25 motorway is available at both junction 17 and 18, connecting you to the national motorway network. Major London airports are also within reach. The area is well served for good quality private and state schools for all ages. Chorleywood and Rickmansworth offer everything for the sporting individual. Rickmansworth Aquadrome is an ideal setting for walks, sailing, fishing and water skiing.

### Additional Information

Tenure: Freehold

Local Authority: Three Rivers District Council

Council Tax Band: F

Energy Efficiency Rating: C

For additional information, please refer to [www.robsonswb.com](http://www.robsonswb.com) or call us on: 01923 777762.





Approximate Gross Internal Area  
 Ground Floor = 95.1 sq m / 1,023 sq ft  
 First Floor = 65.3 sq m / 703 sq ft  
 Outbuildings = 36.7 sq m / 395 sq ft  
 Total = 197.1 sq m / 2,121 sq ft

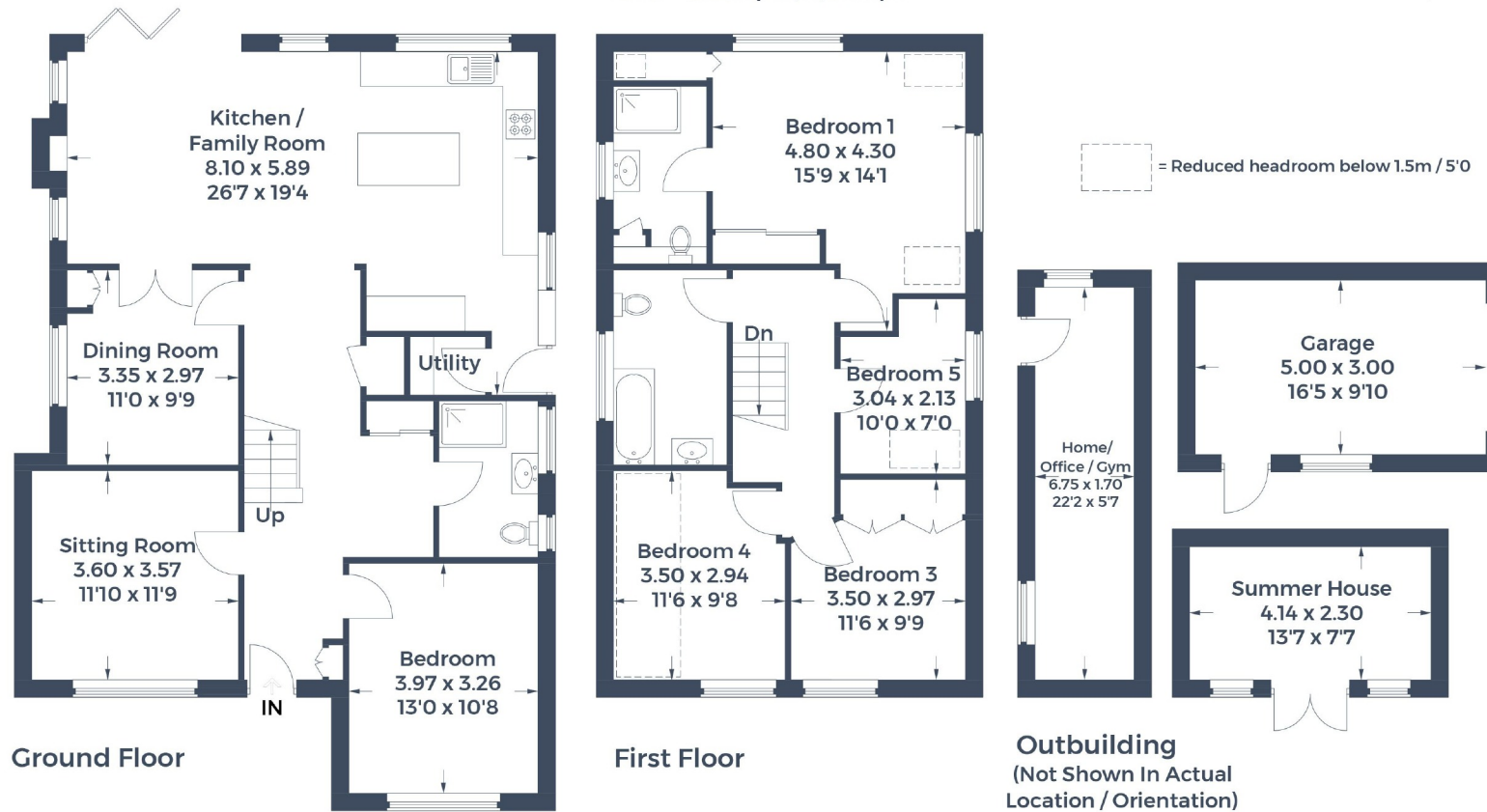


Illustration for identification purposes only,  
 measurements are approximate, not to scale.  
 © CJ Property Marketing Produced for Robsons

**ROBSONS**

130 High Street, Rickmansworth WD3 1AB  
 Tel: 01923 777762 Email: rickmansworth@robsonswb.com  
[www.robsonswb.com](http://www.robsonswb.com)

Important notice: Robsons, their clients and any joint agents give notice that 1: They are not authorised to make or give any representations or warranties in relation to the property either here or elsewhere, either on their own behalf or on behalf of their client or otherwise. They assume no responsibility for any statement that may be made in these particulars. These particulars do not form part of any offer or contract and must not be relied upon as statements or representations of fact. 2: Any areas, measurements or distances are approximate. Plot sizes and dimensions are taken from Promap and are approximate. The text, photographs and plans are for guidance only and are not necessarily comprehensive. It should not be assumed that the property has all necessary planning, building regulation or other consents and Robsons have not tested any services, equipment or facilities. Purchasers must satisfy themselves by inspection or otherwise.