



## AN ATTRACTIVE FOUR BEDROOM, TWO BATHROOM FAMILY HOME

Chestnut Drive, Pinner, HA5 1LX

**ROBSONS**



# AN ATTRACTIVE FOUR BEDROOM, TWO BATHROOM FAMILY HOME

Chestnut Drive, Pinner, HA5 1LX

**TWO RECEPTION ROOMS • LARGE KITCHEN  
/ DINER • FOUR BEDROOMS • TWO  
BATHROOMS • PRIVATE GARDEN • OFF-STREET  
PARKING • FURTHER SCOPE TO EXTEND (STPP)**

## Description

An attractive four bedroom, two bathroom, semi-detached family home that has been recently refurbished to a high standard throughout, and offers further potential to extend (STPP). This property benefits from being conveniently situated for a number of local high streets, as well as being within walking distance of popular primary and secondary schools.

The ground floor comprises a welcoming entrance hallway with ample storage space, a light-filled lounge featuring a large bay window, and a second reception room that leads on to an impressive, open-plan kitchen / diner. The kitchen offers sleek, light grey units with integrated appliances, a kitchen island providing additional worktop space, and plenty of space for a dining table and chairs. Completing the ground floor is a double bedroom with a modern en-suite. The en-suite is also accessible via the main hallway, enabling you to use it as a guest cloakroom.







To the first floor there are two generous double bedrooms benefiting from fitted wardrobes, a further bedroom and a family bathroom with a walk-in shower.

Externally the property offers a well maintained rear garden that is laid to lawn with a small patio area. To the front there is a driveway providing off-street parking for two cars, and manicured hedges.

### Location

Situated off Cannon Lane, this property is in the perfect location for Eastcote, Rayners Lane and Pinner where you will find a variety of shopping facilities, restaurants, coffee houses and supermarkets. For commuters, there are excellent transport links nearby including the Metropolitan and Piccadilly line services at both Rayners Lane and Eastcote, as well as numerous bus routes providing links to the neighbouring areas.

The area is well served by primary and secondary schooling, with Pinner High School and Cannon Lane Primary School within walking distance. There are numerous recreational facilities close by and children's play areas.

### Additional Information

Guide Price: Price on Application

Tenure: Freehold

Local Authority: London Borough of Harrow

Energy Efficiency Rating: Band D

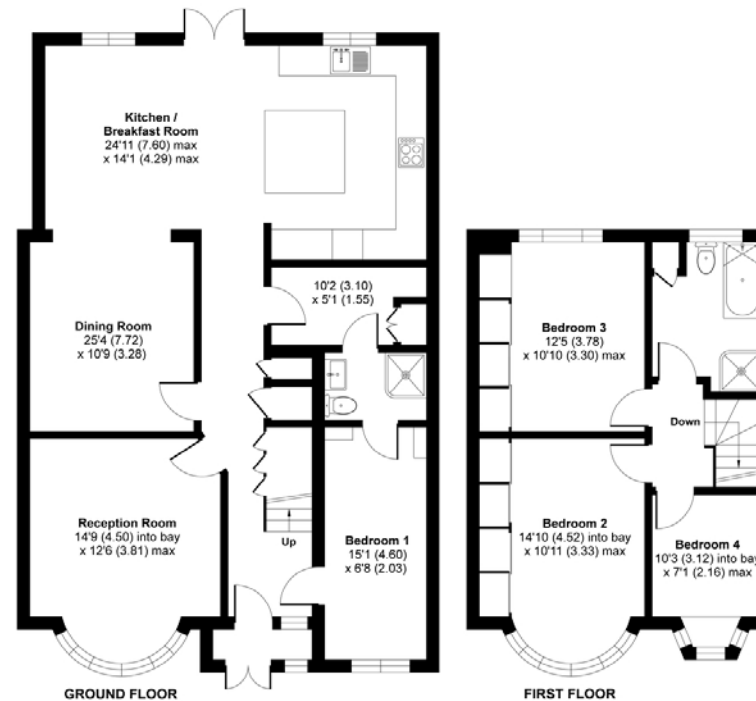




## Chestnut Drive, Pinner, HA5

Approximate Area = 1499 sq ft / 139.2 sq m

For identification only - Not to scale



Floor plan produced in accordance with RICS Property Measurement Standards incorporating International Property Measurement Standards (IPMS2 Residential). © nichecom 2020. Produced for Robsons Lettings. REF: 665532

# ROBSONS

1 High Street, Pinner, Middlesex, HA5 5PJ  
Tel: 0208 866 8083 Pinner@robsonswb.com  
[www.robsonswb.com](http://www.robsonswb.com)

[www.the-londonoffice.co.uk](http://www.the-londonoffice.co.uk)  
40 ST JAMES'S PLACE SW1

Important notice: Robsons, their clients and any joint agents give notice that 1: They are not authorised to make or give any representations or warranties in relation to the property either here or elsewhere, either on their own behalf or on behalf of their client or otherwise. They assume no responsibility for any statement that may be made in these particulars. These particulars do not form part of any offer or contract and must not be relied upon as statements or representations of fact. 2: Any areas, measurements or distances are approximate. Plot sizes and dimensions are taken from Promap and are approximate. The text, photographs and plans are for guidance only and are not necessarily comprehensive. It should not be assumed that the property has all necessary planning, building regulation or other consents and Robsons have not tested any services, equipment or facilities. Purchasers must satisfy themselves by inspection or otherwise.