



A GENEROUSLY SIZED FOUR BEDROOM FAMILY HOME IN A DESIRABLE LOCATION

Norman Crescent, Pinner, HA5 3QN

ROBSONS

A GENEROUSLY SIZED FOUR BEDROOM FAMILY HOME IN A DESIRABLE LOCATION

Norman Crescent, Pinner, HA5 3QN

**ENTRANCE HALLWAY • GUEST CLOAKROOM
THREE RECEPTION ROOMS • KITCHEN /
BREAKFAST ROOM • UTILITY / STUDY •
MASTER BEDROOM WITH EN-SUITE • THREE
FURTHER BEDROOMS • FAMILY BATHROOM •
ATTRACTIVE GARDEN • OFF-STREET PARKING •**

Description

A generously sized, four bedroom extended home situated in a desirable location close to a number of highly regarded schools, amenities and excellent transport facilities.

The ground floor comprises an entrance hallway allowing access to a spacious sitting room that effortlessly flows on to a second reception room, a large dining / family room with bi-folding doors allowing in plenty of natural light, and a generous kitchen / breakfast room offering a range of fitted units. Completing the ground floor is an office / utility room and a guest cloakroom. To the first floor there is a galleried landing providing access to a master bedroom benefitting from fitted wardrobes and an en-suite shower room, three further bedrooms, and a modern family bathroom.





Externally the property offers an attractive, hardscape garden that is mainly laid to lawn with a grey Indian sandstone patio area perfect for entertaining in the summer months. There is also the added benefit of an outbuilding ideal for a home office or gym, and a small storage shed. To the front there is a driveway providing off-street parking for multiple cars.

Location

Located off Blythwood Road, this property enjoys a peaceful location within easy reach of both Pinner and Hatch End high streets, both of which offer a variety of shopping facilities, restaurants, coffee houses and popular supermarkets. For commuters, the Metropolitan line is available at Pinner station, with the Overground services available at Hatch End station. The area is well served by primary and secondary schooling, children's play areas and recreation facilities.

Additional Information

Guide Price: Price on Application

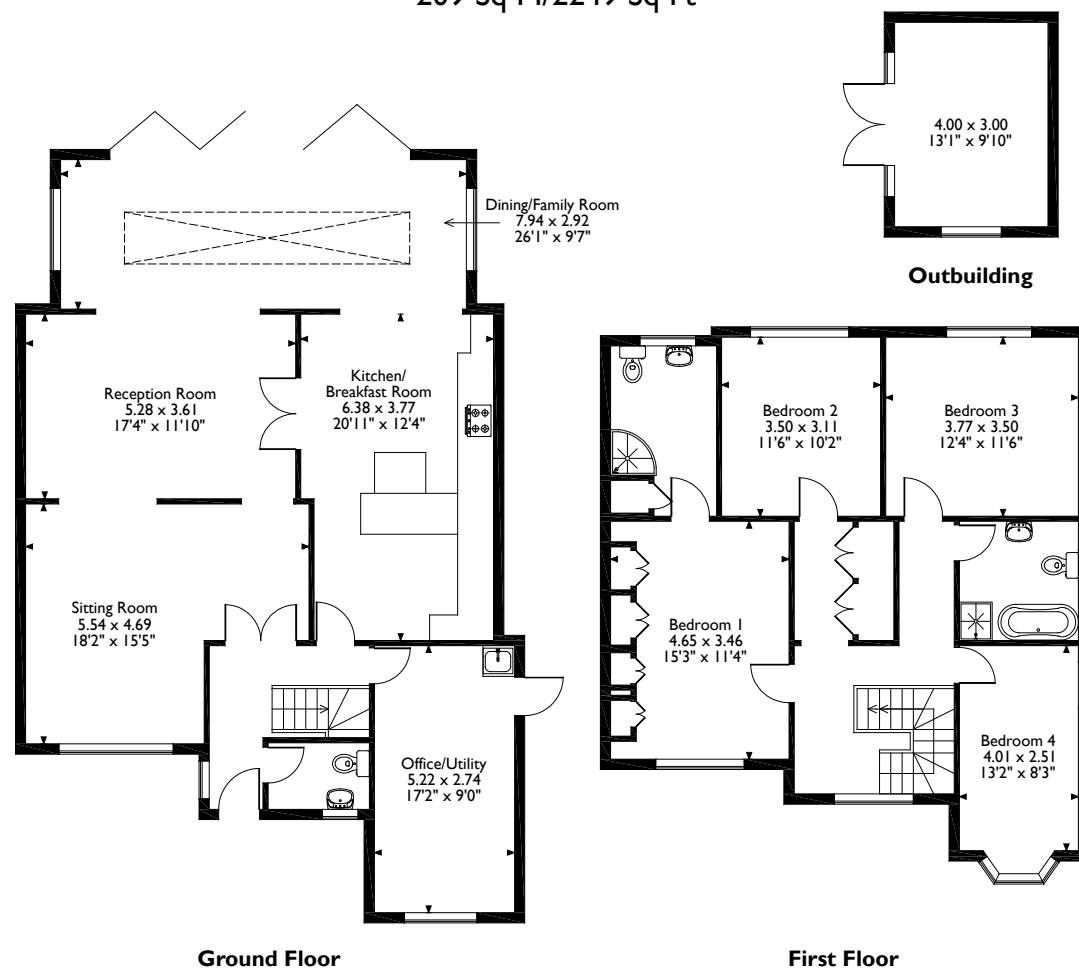
Tenure: Freehold

Local Authority: London Borough of Harrow

Energy Efficiency Rating: Band C



Norman Crescent, Pinner
Approximate Gross Internal Area
209 Sq M/2249 Sq Ft



Please note that the location of doors, windows and other items are approximate and this floorplan is to be used for illustrative purposes only. Unauthorized reproduction is prohibited.

ROBSONS

1 High Street, Pinner, Middlesex, HA5 5PJ
Tel: 0208 866 8083 Pinner@robsonswb.com
www.robsonswb.com

www.the-londonoffice.co.uk
40 ST JAMES'S PLACE SW1

Important notice: Robsons, their clients and any joint agents give notice that 1: They are not authorised to make or give any representations or warranties in relation to the property either here or elsewhere, either on their own behalf or on behalf of their client or otherwise. They assume no responsibility for any statement that may be made in these particulars. These particulars do not form part of any offer or contract and must not be relied upon as statements or representations of fact. 2: Any areas, measurements or distances are approximate. Plot sizes and dimensions are taken from Promap and are approximate. The text, photographs and plans are for guidance only and are not necessarily comprehensive. It should not be assumed that the property has all necessary planning, building regulation or other consents and Robsons have not tested any services, equipment or facilities. Purchasers must satisfy themselves by inspection or otherwise.