



**A CHAIN FREE FOUR BEDROOM, TWO BATHROOM DETACHED FAMILY HOME IN A DESIRABLE LOCATION**

Arnett Close, Rickmansworth, Hertfordshire, WD3 4DB

**ROBSONS**



Arnett Close, Rickmansworth, Hertfordshire, WD3 4DB

**LIVING ROOM • DINING ROOM • KITCHEN • UTILITY ROOM • GROUND FLOOR SHOWER ROOM • FOUR BEDROOMS • FAMILY BATHROOM • SOUTH FACING ATTRACTIVE REAR GARDEN • OFF STREET PARKING & GARAGE • NO ONWARD CHAIN**

### Description

Nestled in a quiet cul-de-sac, this well-presented four-bedroom, two-bathroom detached family home is ideally located within easy reach of excellent schools, transport links, and local amenities. This fantastic family home requires some updating and is offered with no onward chain, making it an excellent opportunity for buyers seeking a smooth purchase process.

Upon entering, a spacious hallway leads to a ground-floor shower room, a generous, light-filled living room with a French door opening onto the south-facing garden. There is also a separate dining room and a well-equipped kitchen with fitted units. Adjacent to the kitchen, a utility room provides additional convenience with access to the garden and the integral garage.







Upstairs, there are four well-appointed bedrooms all with fitted wardrobes, and a family bathroom.

The exterior offers a delightful rear garden, surrounded by mature shrubs, flowerbeds, and hedges, with a patio area perfect for outdoor relaxation. To the front, there is a driveway, a small garden, an integral garage, and convenient side access to the rear garden.

### Location

Rickmansworth town centre has a wide range of boutique shops, coffee houses, restaurants and major supermarkets. The Metropolitan and Chiltern line train services connect you to London Baker Street, Marylebone Station and beyond. The M25 motorway is available at both junction 17 and 18, connecting you to the national motorway network. Major London airports are also within reach. The area is well served for good quality private and state schools for all ages. Chorleywood and Rickmansworth offer everything for the sporting individual from rugby, cricket, football, tennis, horse riding and golf. Rickmansworth Aquadrome is an ideal setting for walks, sailing, fishing and water skiing.

### Additional Information

Tenure: Freehold

Local Authority: Three Rivers District Council

Council Tax Band: F

Energy Efficiency Rating: D

For additional information, please refer to [www.robsonsworld.com](http://www.robsonsworld.com) or call us on: 01923 777762.





Approximate Gross Internal Area  
 Ground Floor = 79.7 sq m / 858 sq ft  
 First Floor = 51.8 sq m / 557 sq ft  
 Total = 131.5 sq m / 1,415 sq ft

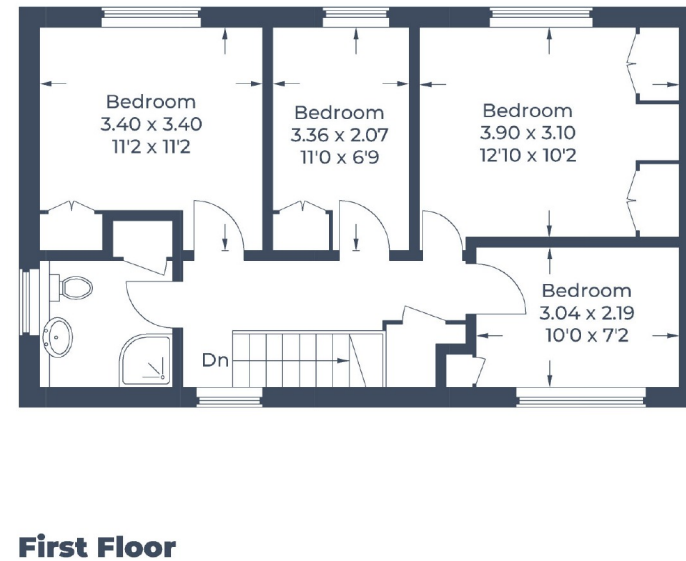
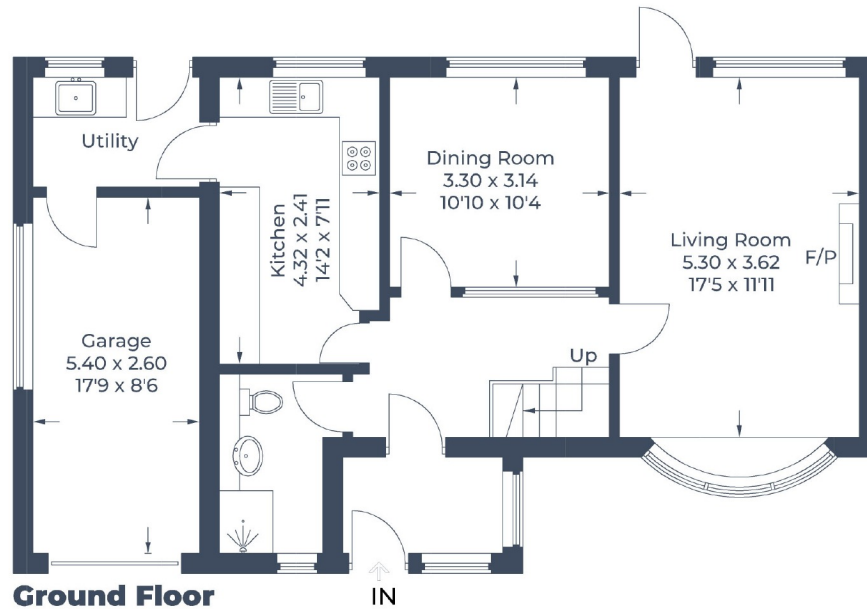


Illustration for identification purposes only,  
 measurements are approximate, not to scale.  
 © CJ Property Marketing Produced for Robsons

**ROBSONS**

130 High Street, Rickmansworth WD3 1AB  
 Tel: 01923 777762 Email: rickmansworth@robsonswb.com  
[www.robsonswb.com](http://www.robsonswb.com)

SCAN TO VISIT



OUR WEBSITE

Important notice: Robsons, their clients and any joint agents give notice that 1: They are not authorised to make or give any representations or warranties in relation to the property either here or elsewhere, either on their own behalf or on behalf of their client or otherwise. They assume no responsibility for any statement that may be made in these particulars. These particulars do not form part of any offer or contract and must not be relied upon as statements or representations of fact. 2: Any areas, measurements or distances are approximate. Plot sizes and dimensions are taken from Promap and are approximate. The text, photographs and plans are for guidance only and are not necessarily comprehensive. It should not be assumed that the property has all necessary planning, building regulation or other consents and Robsons have not tested any services, equipment or facilities. Purchasers must satisfy themselves by inspection or otherwise.