



A THREE BEDROOM HOME WITH A SELF-CONTAINED ONE BEDROOM ANNEXE

Hillcroft Avenue, Pinner, HA5 5AW

ROBSONS

Hillcroft Avenue, Pinner, HA5 5AW

NO ONWARD CHAIN • TWO RECEPTION ROOMS • KITCHEN • SELF CONTAINED ONE BEDROOM ANNEXE • THREE FURTHER BEDROOMS • FAMILY BATHROOM • GARDEN • OFF-STREET PARKING & GARAGE TO REAR • SCOPE TO FURTHER EXTEND (STPP)

Description

A three-bedroom semi-detached home with a self-contained one-bedroom annexe, offering a total of 1,708sq.ft. (including the garage), situated close to Rayners Lane amenities and transport links. The property has been well maintained throughout, and is offered to the market with no onward chain.

The ground floor comprises an entrance porch and hallway, two generous reception rooms and a kitchen. In addition, there is an attached annexe with its own entrance as well as being accessible via the property, and features a double bedroom with fitted wardrobes, a shower room and a kitchen / breakfast room.

To the first floor there are two double bedrooms, a single bedroom (all with fitted wardrobes), and a family bathroom.





The property boasts a well-maintained rear garden that is part lawn and part patio, with access to the garage, ideal for garden storage. Furthermore, there is off-street parking in front of the garage that is located at the rear of the property.

Location

Hillcroft Avenue is located off Rayners Lane, just a short distance from Rayners Lane amenities, with both Pinner and Eastcote High Streets close by. For commuters, nearby Rayners Lane Station provides regular links into London via the Metropolitan Line and the Piccadilly Line. Local bus routes are also easily accessible.

The area is well served by local primary and secondary schooling, including nearby Longfield Primary School.

Additional Information

Tenure: Freehold

Local Authority: London Borough of Harrow

Council Tax Band: TBC

Energy Efficiency Rating: TBC

For additional information, please refer to www.robsonswb.com or call us on: 020 8866 8083.



Approximate Gross Internal Area
 Ground Floor = 93.3 sq m / 1,004 sq ft
 First Floor = 53.1 sq m / 571 sq ft
 Garage = 12.4 sq m / 133 sq ft
 Total = 158.8 sq m / 1,708 sq ft

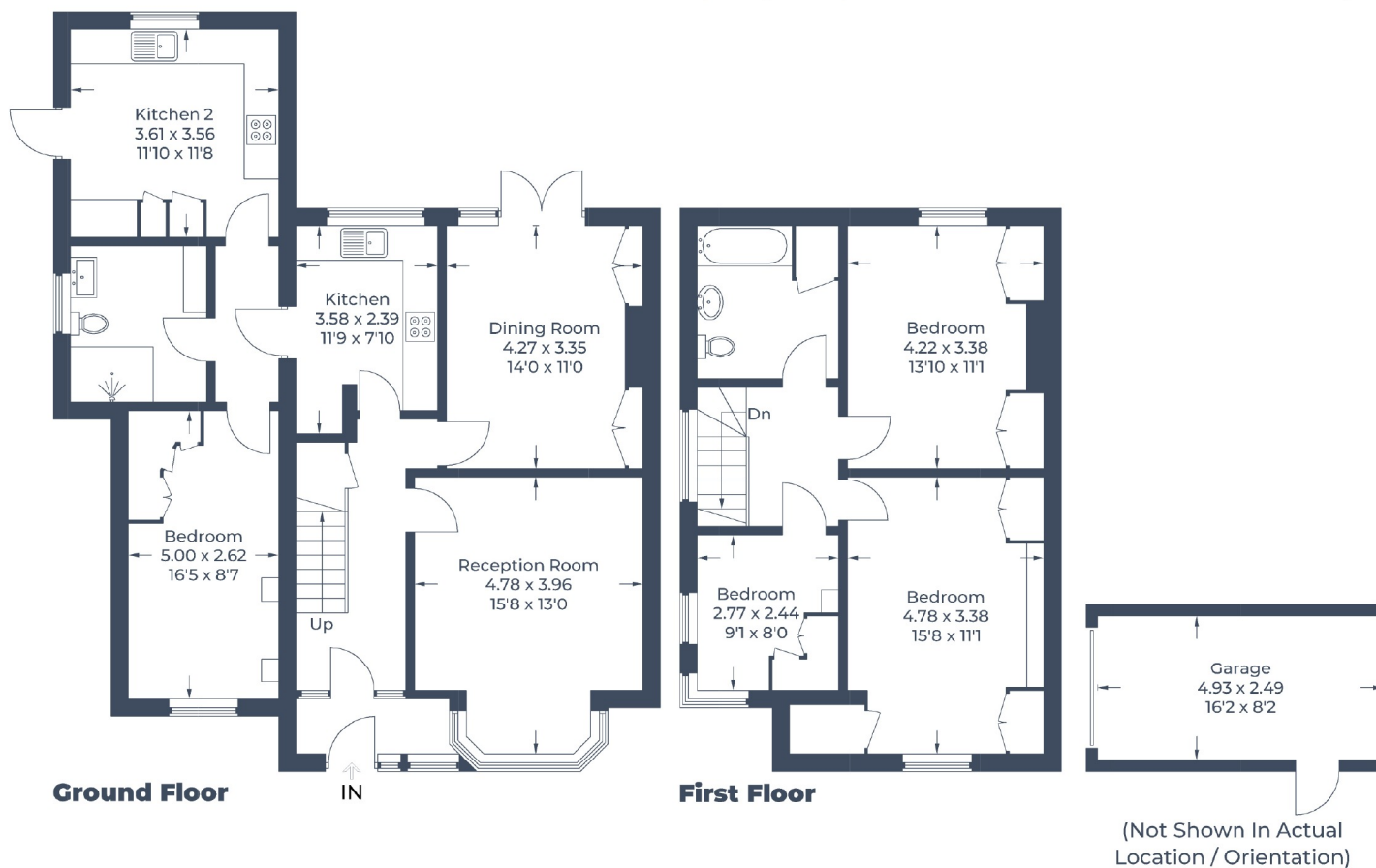


Illustration for identification purposes only,
 measurements are approximate, not to scale.
 © CJ Property Marketing Produced for Robsons

ROBSONS

1 High Street, Pinner HA5 5PJ
 Tel: 020 8866 8083 Email: pinner@robsonswb.com
www.robsonswb.com

SCAN TO VISIT



OUR WEBSITE

Important notice: Robsons, their clients and any joint agents give notice that 1: They are not authorised to make or give any representations or warranties in relation to the property either here or elsewhere, either on their own behalf or on behalf of their client or otherwise. They assume no responsibility for any statement that may be made in these particulars. These particulars do not form part of any offer or contract and must not be relied upon as statements or representations of fact. 2: Any areas, measurements or distances are approximate. Plot sizes and dimensions are taken from Promap and are approximate. The text, photographs and plans are for guidance only and are not necessarily comprehensive. It should not be assumed that the property has all necessary planning, building regulation or other consents and Robsons have not tested any services, equipment or facilities. Purchasers must satisfy themselves by inspection or otherwise.