



## A TWO BEDROOM FIRST FLOOR APPARTMENT

Glenshee Close, Northwood, Middlesex, HA6 2UH

**ROBSONS**



## A TWO BEDROOM FIRST FLOOR APARTMENT

Glenshee Close, Northwood, Middlesex, HA6 2UH

**TWO BEDROOM • ONE BATHROOM •  
KITCHEN • BALCONY • ALLOCATED PARKING •  
COMMUNAL GARDENS •**

### Description

Tucked away in a quiet cul de sac this modern two bedroom first floor purpose built apartment is offered to the market with no onward chain, allocated parking space and spacious balcony accessed directly from the living/dining room.







### **Location**

Northwood provides a range of shopping facilities, a Waitrose supermarket, restaurants and the Metropolitan Line Station providing access to Baker Street and state schools. Places of worship and recreational facilities are also well catered for in the surrounding area and major motorway links to M25 and M1 are nearby.

### **Additional Information**

Tenure: Share of Freehold

Lease Length: 970 + Years

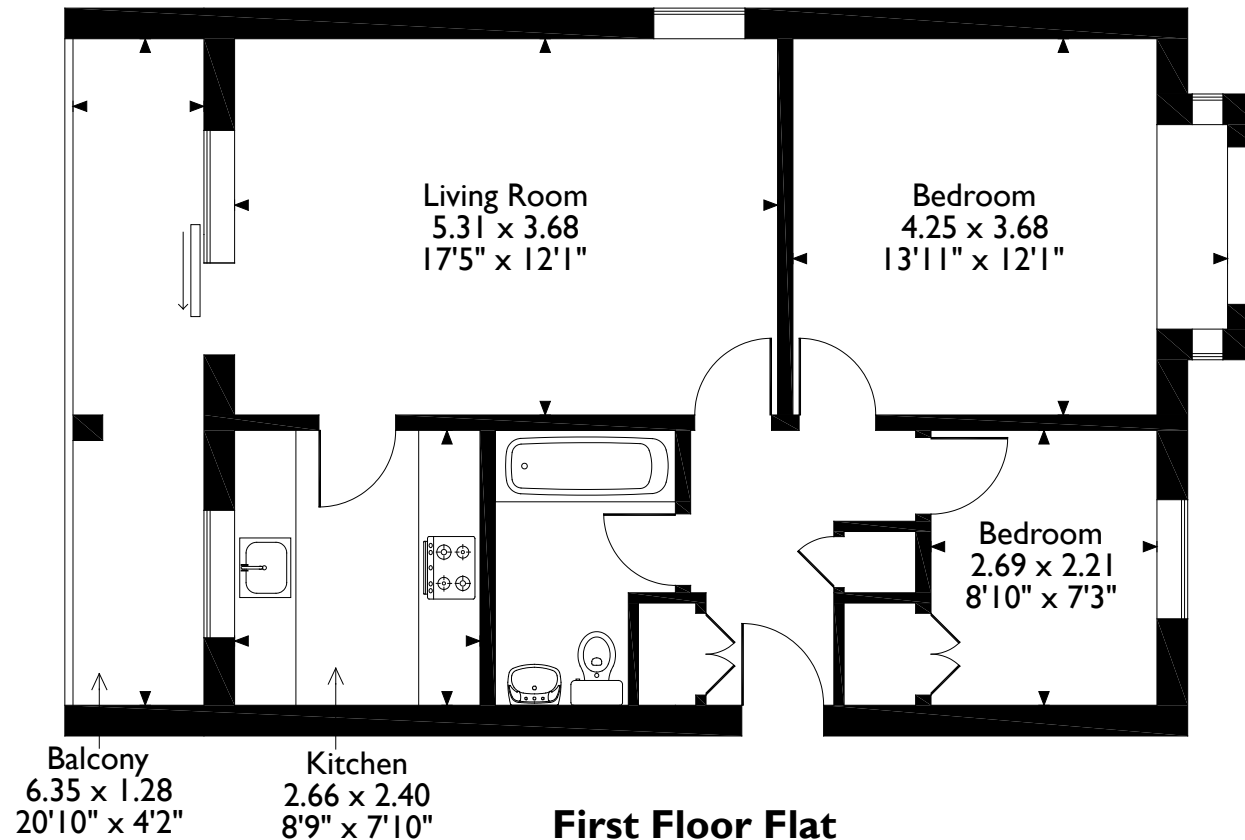
Service Charge: £100 pcm

Local Authority: London Borough of Hillingdon

Energy Efficiency Rating: C



Glenshee Close, Northwood  
Approximate Gross Internal Area  
60 Sq M/646 Sq Ft



Please note that the location of doors, windows and other items are approximate and this floorplan is to be used for illustrative purposes only. Unauthorized reproduction is prohibited.

**ROBSONS**

7 Clive Parade, Northwood, Middlesex HA6 2QF  
Tel: 01923 835355 northwood@robsonswb.com

[www.robsonswb.com](http://www.robsonswb.com)

[www.the-londonoffice.co.uk](http://www.the-londonoffice.co.uk)  
40 ST JAMES'S PLACE SW1

Important notice: Robsons, their clients and any joint agents give notice that 1: They are not authorised to make or give any representations or warranties in relation to the property either here or elsewhere, either on their own behalf or on behalf of their client or otherwise. They assume no responsibility for any statement that may be made in these particulars. These particulars do not form part of any offer or contract and must not be relied upon as statements or representations of fact. 2: Any areas, measurements or distances are approximate. Plot sizes and dimensions are taken from Promap and are approximate. The text, photographs and plans are for guidance only and are not necessarily comprehensive. It should not be assumed that the property has all necessary planning, building regulation or other consents and Robsons have not tested any services, equipment or facilities. Purchasers must satisfy themselves by inspection or otherwise.