



STUNNING 4 BEDROOM 3 BATHROOM HOME IN TRANQUIL SETTING

Hazelbank, Croxley Green, Rickmansworth, Hertfordshire, WD3 3EW

ROBSONS

STUNNING 4 BEDROOM 3 BATHROOM HOME IN TRANQUIL SETTING

Hazelbank, Croxley Green, Rickmansworth, Hertfordshire, WD3 3EW

KITCHEN • DINING ROOM • LIVING ROOM • PRINCIPAL BEDROOM WITH EN-SUITE • THREE FURTHER BEDROOMS • FAMILY BATHROOM • SHOWER ROOM • GUEST CLOAKROOM • UTILITY ROOM • INTEGRAL GARAGE • TWO PARKING SPACES • ATTRACTIVE REAR GARDEN • VISITOR PARKING • STUNNING VIEWS

Robsons are pleased to showcase this immaculately presented four bedroom, three bathroom family home situated in a private gated development of just six properties and backing the Grand Union Canal.

This beautiful property is bright, spacious and boasts many impressive features. The welcoming entrance hall has marble flooring and leads into the bright kitchen, which has ample storage and granite work surfaces, together with a double electric oven, gas hob and fitted appliances. Steps lead down to the dining room with patio doors leading to the rear garden. The ground floor is complemented by a generous guest cloakroom and utility area.





To the first floor is the living room, which has a Juliet balcony overlooking the rear garden and far reaching views over the Grand Union Canal and River Gade. There is also a double bedroom, bespoke wet bar and shower room.

The principal bedroom is situated on the second floor and has an en-suite bathroom and fitted wardrobes. There are two further bedrooms on this floor, both with fitted wardrobes and the family bathroom.

The property is approached via a block paved driveway providing off street parking for two vehicles and access to the integral garage. To the rear is the attractive south facing rear garden that is mainly laid to lawn with patio areas and a gate providing direct access to the Grand Union Canal.

Picturesque Croxley Green provides the perfect backdrop as it offers village charm in the rural suburbs of Hertfordshire. The property is within easy reach of Croxley Green and Rickmansworth town centres with its wide range of boutique shops, coffee houses, restaurants and the major supermarkets. The Metropolitan and Chiltern line train services are a short distance and connect to London Baker Street, Marylebone Station and beyond. The M25 motorway is available at both junctions 17 and 18. The area is also well served for good quality private and state schools for all ages.

Additional Information

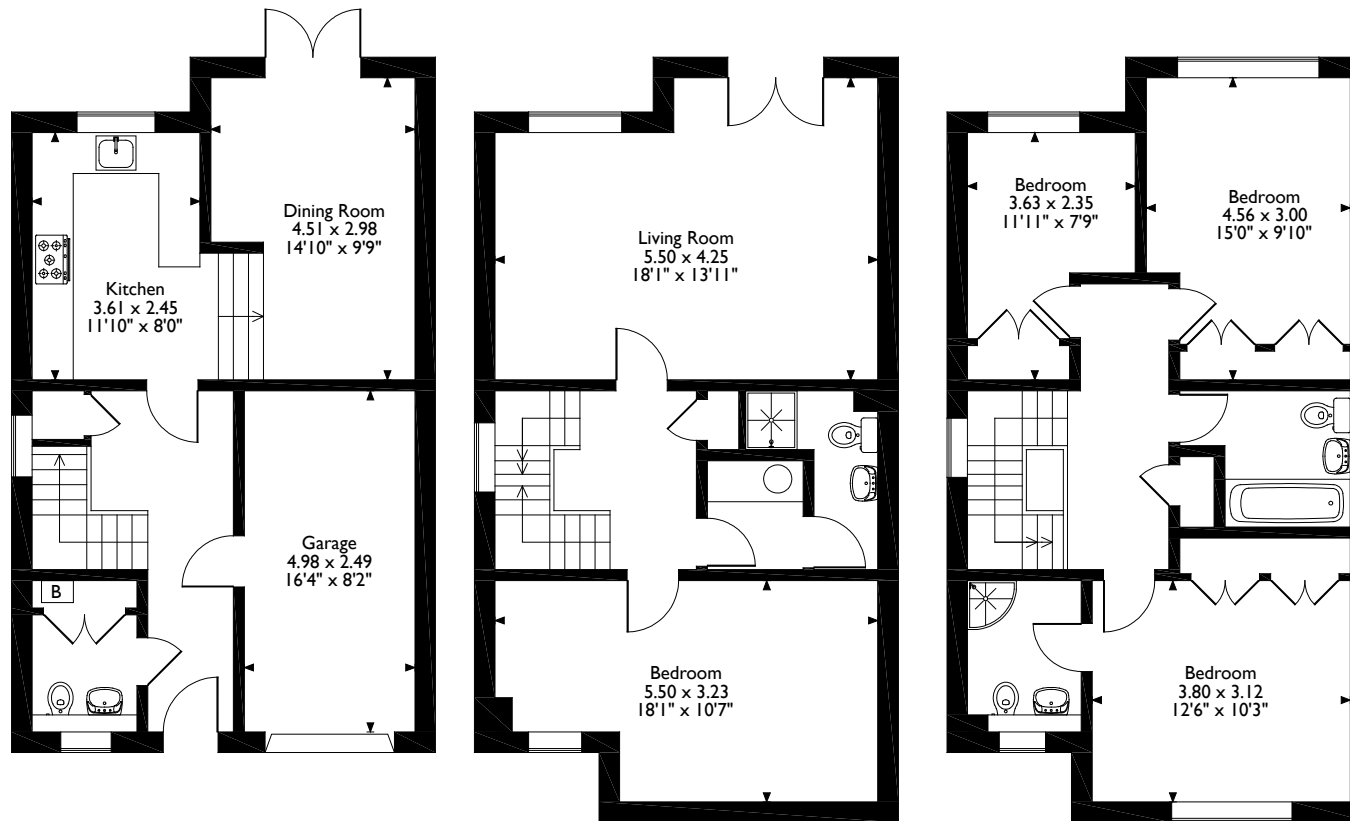
Tenure: Freehold

Local Authority: Three Rivers District Council

Energy Efficiency Rating: Band C



Hazelbank Croxley Green, Rickmansworth
Approximate Gross Internal Area
161 Sq M/1740 Sq Ft



Ground Floor

First Floor

Second Floor

Please note that the location of doors, windows and other items are approximate and this floorplan is to be used for illustrative purposes only. Unauthorized reproduction is prohibited.

ROBSONS

130 High Street, Rickmansworth, Hertfordshire, WD3 1AB
Tel: 01923 777762 Email: rickmansworth@robsonswb.com

www.robsonswb.com

www.the-londonoffice.co.uk
40 ST JAMES'S PLACE SW1