



A SPACIOUS & WELL PRESENTED FOUR BEDROOM DETACHED HOME

Limedene Close, Pinner, Middlesex HA5 3PX

ROBSONS

A SPACIOUS & WELL PRESENTED FOUR BEDROOM DETACHED HOME

Limedene Close, Pinner, Middlesex HA5 3PX

- **ENTRANCE HALL • RECEPTION ROOM**
- **LOUNGE/DINER • KITCHEN/BREAKFAST ROOM**
- **GUEST W/C**
- **MASTER BEDROOM WITH EN-SUITE SHOWER**
- **THREE FURTHER DOUBLE BEDROOMS**
- **FAMILY BATHROOM • AMPLE STORAGE**
- **ATTRACTIVE REAR GARDENS**
- **OFF STREET PARKING VIA OWN DRIVEWAY**

Description

This spacious and well-presented four bedroom family home enjoys a peaceful location. To the ground floor there is a porch which leads into an entrance hall with access to a cloakroom, a welcoming front aspect reception room, a modern fitted kitchen with breakfast bar, and a generous through lounge/dining room with garden access.

To the first floor is a generous landing leading to a bright master bedroom with a bespoke en-suite shower room, three further double bedrooms and a modern family bathroom.

The property also enjoys a wrap round garden, ample storage space and off street parking via own driveway.





Location

Pinner and Hatch End can be found close by offering a variety of boutique shops, restaurants, coffee houses and popular supermarkets.

Transport facilities include local bus links and the Metropolitan Line at Pinner tube station as well as the Overground at Hatch End rail station, both providing a frequent service into the heart of Central London and beyond.

The area is will served for Primary and Secondary Schools, children's parks/playgrounds and recreational facilities.

Additional Information

Guide Price: Price on Application

Tenure: Freehold

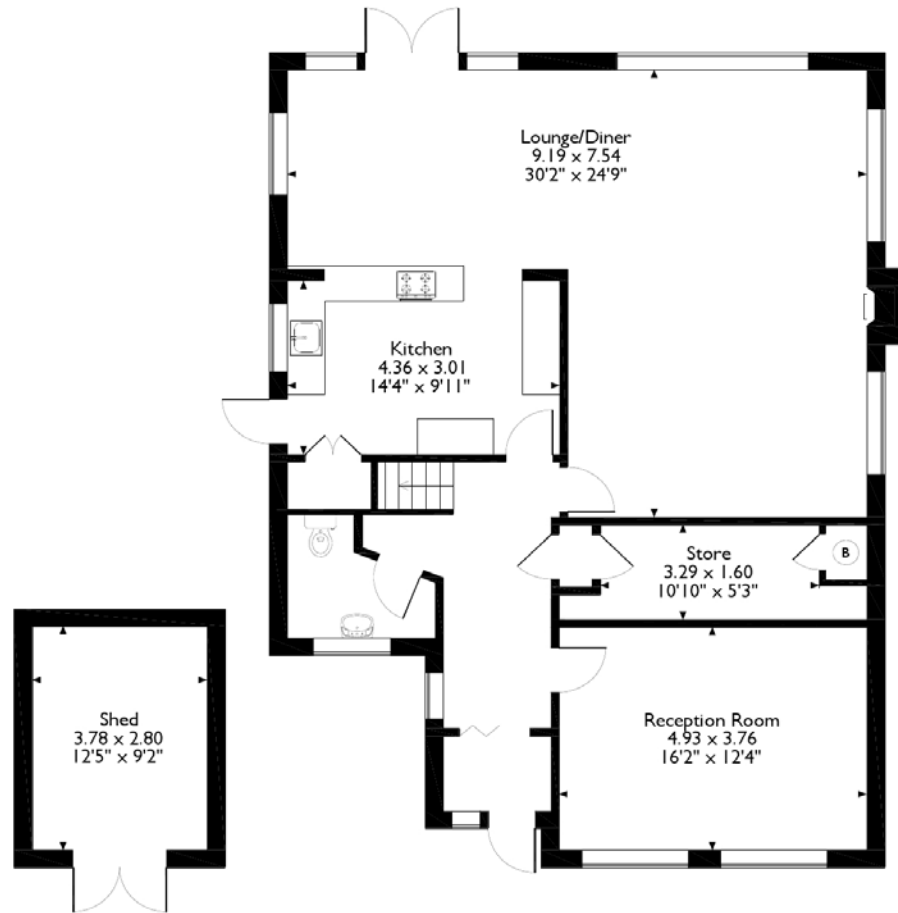
Local Authority: London Borough of Harrow

Energy Efficiency Rating: Band D

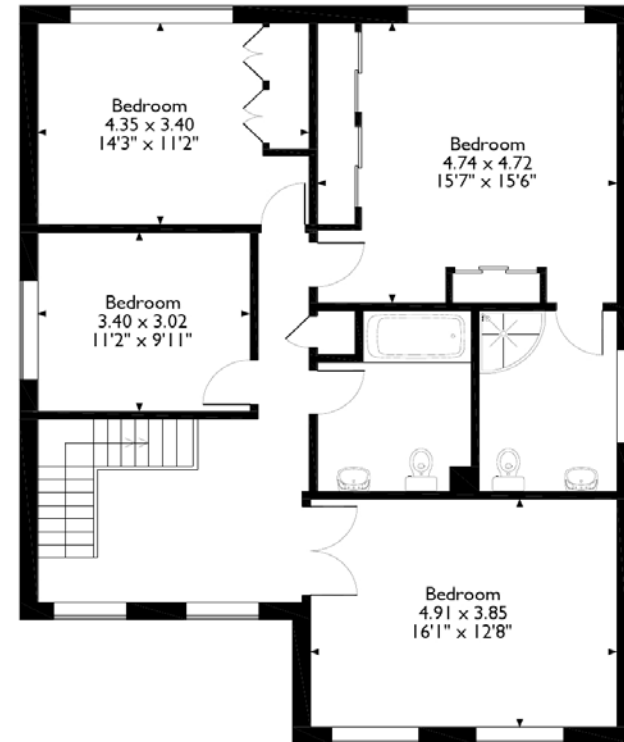
Version.1



Limedene Close , Pinner
Approximate Gross Internal Area
224 sq m/ 2406 sq ft



Ground Floor



First Floor

ROBSONS

1 High Street, Pinner, Middlesex HA5 5PJ
Tel: 0208 866 8083 sarah.howsl@robsonswb.com
www.robsonswb.com