



An immaculately presented five bedroom home on a quiet residential road  
Woodgate Crescent, Northwood, Middlesex HA6 3RB

**ROBSONS**



**Asking Price: £4,650 pcm**

## **An immaculately presented five bedroom home on a quiet residential road**

Woodgate Crescent, Northwood, Middlesex HA6 3RB

---

• ENTRANCE HALL • THREE RECEPTION ROOMS • CONSERVATORY • KITCHEN AND SEPERATE UTILITY ROOM • CLOAKROOM • MAIN BEDROOM WITH ENSUITE AND FITTED WARDROBES • FOUR FURTHER BEDROOMS ONE WITH ENSUITE • FAMILY BATHROOM • REAR GARDEN • DRIVEWAY WITH PARKING • UNFURNISHED

---

### **Description**

An immaculately presented five bedroom detached family home nestled on a quiet residential road within the prestigious private Gatehill Estate . Boasting expansive and adaptable living space spread across two levels, the ground floor comprises a large contemporary kitchen, three inviting reception rooms, a bright conservatory, a guest W/C and a separate utility room. The first floor features five generously sized bedrooms and three well-appointed bathrooms. Externally is a well maintained and generous sized rear garden and a front driveway suitable for parking multiple vehicles.

**\*\* An advance reservation payment of one weeks rent is required to secure the property \*\***

### **Location**

Northwood provides a range of shopping facilities including a Waitrose supermarket, a variety of restaurants and other amenities with the Metropolitan Line station providing access to Baker Street and the City. There is a plethora of state and private schooling together with a wide choice of recreational facilities, which include golf courses and fitness centres. The M1, M40 and M25 motorways are also accessible.

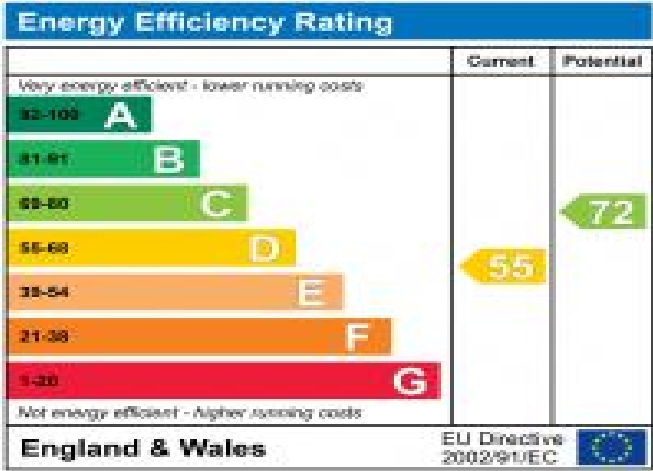




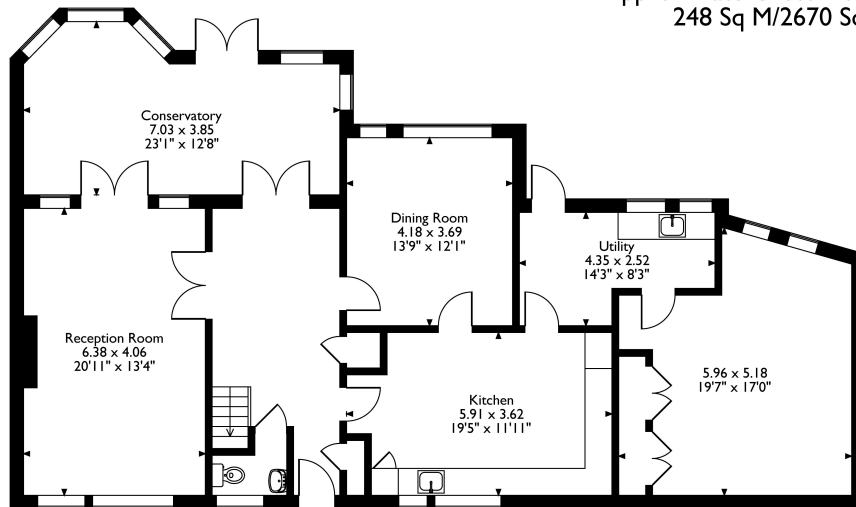


Additional Information

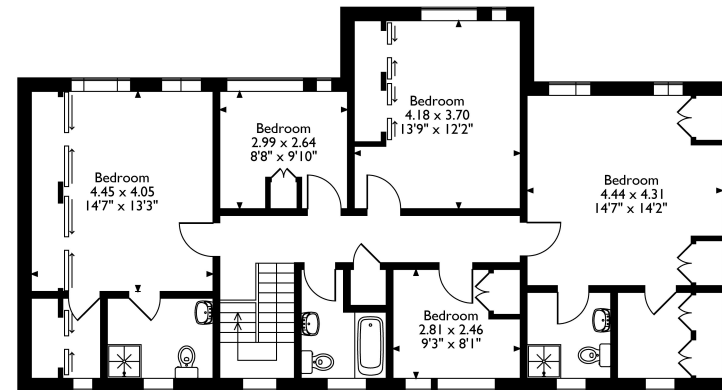
- Local Authority: Hillingdon
- Council Tax Band: G
- Deposit Amount: £5,365.00
- Reservation Payment: One weeks rent
- Energy Efficiency Rating: Band D
- Available Date: 21/03/2025



Woodgate Crescent, Northwood, HA6 3RB  
Approximate Gross Internal Area  
248 Sq M/2670 Sq Ft



**Ground Floor**



**First Floor**

Please note that the location of doors, windows and other items are approximate and this floorplan is to be used for illustrative purposes only. Unauthorized reproduction is prohibited.



REGISTERED OFFICE 2-4 PACKHORSE ROAD, GERRARDS CROSS, BUCKINGHAMSHIRE, ENGLAND, SL9 7QE. COMPANY NO. 07557114. VAT NO. GB211239453