



A three bedroom home in a sought after location
Middleton Drive, Pinner, HA5 2PG

ROBSONS

Asking Price: £2,500 pcm

A three bedroom home in a sought after location

Middleton Drive, Pinner, HA5 2PG

• ENTRANCE HALL • KITCHEN/DINING ROOM • LIVING ROOM • CLOAKROOM/SHOWER ROOM • THREE BEDROOMS - TWO WITH FITTED WARDROBES • BATHROOM • REAR GARDEN • DRIVEWAY WITH PARKING • GARAGE TO THE REAR OF THE PROPERTY • UNFURNISHED

Description

A halls-adjoining three-bedroom semi-detached home with bright, modern interiors, a sizeable rear garden and off-street parking, situated within easy reach of Northwood Hills amenities, local schools and excellent transport links. Comprising of a hallway, a ground floor shower room & wc, a front aspect lounge, and a generous kitchen /dining room. The kitchen features modern units providing ample storage space, with integrated appliances. There are three bedrooms two with fitted wardrobes, and a three-piece family bathroom. Externally, the home boasts a sizeable rear Off-street parking is available to the front of the property via your own driveway, with the added benefit of a garage.

Location

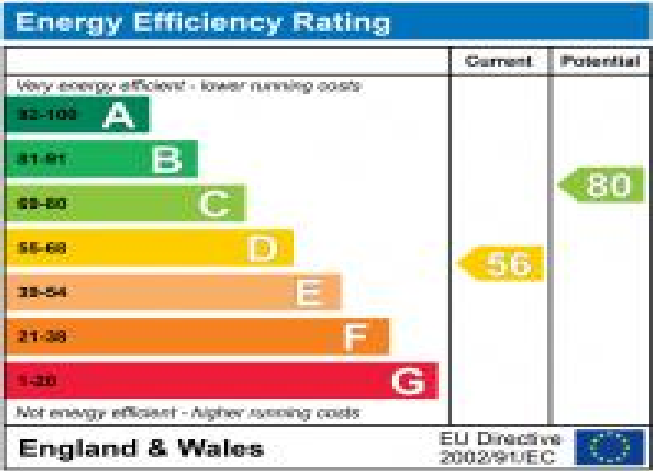
Middleton Drive is located off Joel Street, just a short distance from Northwood Hills High Street, with Pinner and Eastcote High Streets close by. For commuters, nearby Northwood Hills Underground Station provides a frequent service into London via the Metropolitan Line, with a number of local bus routes easily accessible. The area is well served by primary and secondary schooling, including Harlyn Primary School and Haydon Secondary School, as well as children's parks/playgrounds and recreational facilities.



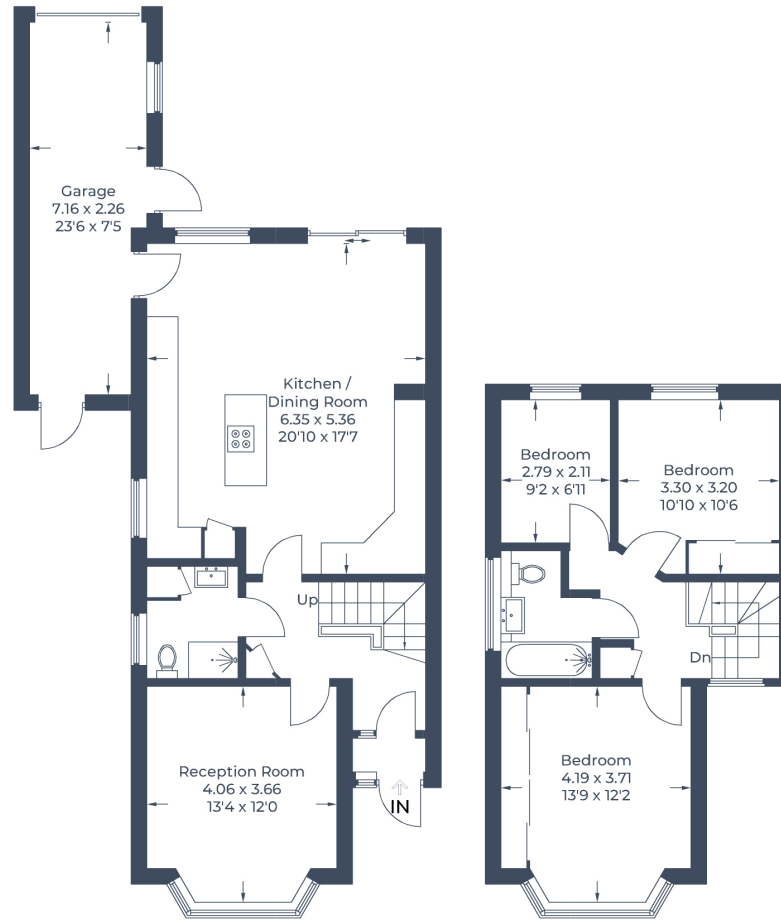


Additional Information

- Local Authority: Hillingdon
- Council Tax Band: E
- Deposit Amount: £2,884.00
- Reservation Payment: One weeks rent
- Energy Efficiency Rating: Band D
- Available Date: 05/05/2025



Approximate Gross Internal Area
Ground Floor = 79.3 sq m / 853 sq ft
First Floor = 43.4 sq m / 467 sq ft
Total = 122.7 sq m / 1,320 sq ft



Ground Floor

First Floor

Illustration for identification purposes only,
measurements are approximate, not to scale.
© CJ Property Marketing Produced for Robsons

